

The background of the cover is a photograph of a red brick building, likely a University of Florida building, with several palm trees in the foreground and background. The sky is bright and slightly overcast.

STUDENT FINANCIAL AFFAIRS

# FACT BOOK

2016 - 2017

**UF** UNIVERSITY of  
FLORIDA



**Student Financial Affairs**

**2016-17**

# **FACT BOOK**

## introduction

## The Office for Student Financial Affairs

The Office for Student Financial Affairs (SFA) is a service-oriented department within the Division of Enrollment Management. The office is located on the ground floor of the Marshall M. Criser Student Services Center. SFA administers federal, state, private, and institutional funds. On average, 80 percent of students received some form of financial assistance during the 2016-17 academic year at the University of Florida. The *Student Financial Affairs Fact Book* is statistical in form and is designed to show the impact of financial aid in helping students achieve their desired educational goals at the University of Florida. Information reported will show trends in financial aid over the past three to ten years.

*Fact Book 2016-17*  
*Office for Student Financial Affairs*

Rick Wilder  
*Director*

The *Fact Book 2016-17* was compiled by:  
Nadav Katz  
*Assistant Director*

Jennifer Towers  
*Compliance Coordinator II*

The *Fact Book 2016-17* was designed by:  
Sharon Eyman  
*Assistant Director*

Date of Publication:  
1/9/2018

University of Florida  
*Office for Student Financial Affairs*  
S-107 Criser Hall  
P. O. Box 114025  
Gainesville, Florida 32611-4025  
(352) 392-1275  
[www.sfa.ufl.edu](http://www.sfa.ufl.edu)

This report is available in alternative formats for individuals with documented, print-related disabilities.  
Hearing-impaired individuals may call our telephone line for students with disabilities: Florida Relay Service 711 (V/TDD).  
Our website at [www.sfa.ufl.edu](http://www.sfa.ufl.edu) is screen-reader friendly.

# Table of Contents

## Introduction

Table of Contents.....	iii
Facts at a Glance .....	iv
Florida Bright Futures Summary .....	v
Machen Florida Opportunity Scholarship.....	vi
Student Financial Affairs Aid Summary .....	vii
Student Financial Affairs by the Numbers.....	viii
UF Rankings.....	x

## Fiscal Summary

Summary of Student Aid.....	2
Summary of Student Aid Awards (longitudinal) .....	4
Summary of Student Aid Disbursed (longitudinal) .....	6
Financial Aid by Type.....	8
Financial Aid by Source.....	10
Total Need and Non-Need-Based Aid.....	12

## Demographics

Parental Median Income of Freshman Students.....	14
Average Income by Race .....	15
Financial Aid by Race .....	16
Financial Aid Recipients by Race (longitudinal).....	17
Average Financial Aid Award by Race (longitudinal) .....	18
Financial Aid by Gender .....	19
Financial Aid Recipients by Gender (longitudinal).....	20
Average Financial Aid Award by Gender (longitudinal).....	21
Aid by Classification (year in college) .....	22
Aid by University of Florida College .....	25
Aid by Florida County.....	30

## Attendance Costs

Matriculation and Tuition Fees per Credit Hour.....	36
Undergraduate Student Cost of Attendance Comparison.....	37
Total Student Cost of Attendance Comparison.....	38

## Student Loans

University of Florida Loan Cohort Default Rates .....	40
Average Loan Indebtedness by Loan Program and Classification .....	41

## General

Financial Aid Applications and Awards .....	44
Student Walk-In Traffic by Semester.....	45

## Organization

Organizational Chart.....	48
Student Financial Affairs Staff by Classification .....	49

## Appendix

Glossary of Financial Aid Terms.....	52
--------------------------------------	----



## Facts at a Glance

### Summary

Total Aid Disbursed	\$589,731,685
Total Aid Recipients (unduplicated)	48,553
Percentage of Enrolled Students Who Received Aid	80%
Estimated Undergraduate Cost of Attendance	\$21,230
Average Undergraduate Loan Indebtedness (students graduating 2016-17)	\$22,188
Federal Direct Stafford Loan Fiscal Year 2013 3-Year Cohort Default Rate	2.60%

### Breakdown by Type of Funds

Scholarships (including waivers)	\$203,289,561
Grants	\$86,816,305
Loans	\$275,198,028
Employment	\$24,427,791

### Breakdown by Source of Funds

Federal	\$313,185,854
State	\$133,454,270
Institutional	\$105,905,173
Private	\$37,186,388

## Florida Bright Futures Summary

	Students	Amount Disbursed
Florida Academic Scholars	15,722	\$40,473,626
Florida Medallion Scholars	7,578	\$14,074,507
Florida Gold Seal Vocational	0	\$0
Florida Top Scholars	121	\$138,116
Total Florida Bright Futures Programs	23,421	\$54,686,249
Percent In-State Freshman Receiving Florida Bright Futures		89%
Percent In-State Undergraduates Receiving Florida Bright Futures		61%

## Machen Florida Opportunity Scholarship Recipient Profile\*

<b>Number of Scholars</b>	1,180	<b>Total Dollars Paid</b>	\$11,778,138
		Average Family Income	\$19,702
<b>Recipients by Race</b>		Average Award	\$9,981
Black	29%	<b>Average UF Cumulative GPA</b>	
Native American	1%	2016 Cohort	3.29
Asian	11%	2015 Cohort	3.29
Hispanic	38%	2014 Cohort	3.2
White	20%	2013 Cohort	3.14
Not Reported/Other	1%	2012 Cohort	3.23
		2011 Cohort	3.29
<b>Recipients by Gender</b>		2010 Cohort	3.17
Female	63%	2009 Cohort	3.02
Male	37%	2008 Cohort	3.15
		2007 Cohort	3.66

\* Figures reflect only students who received Machen Florida Opportunity funds.

## Student Financial Affairs Aid Summary

**Total Financial Aid\***  
**\$633,356,740**

2016-17

**Grants**

**\$86,816,305**

26,283 Awards

**Loans**

**\$275,198,028**

35,050 Awards

**Scholarships**

**\$178,455,694**

45,686 Awards

**Student Employment**

**\$24,427,791**

11,477 Awards

**Custodial Funds**

**\$24,833,867**

6,324 Awards

**Florida Prepaid**

**\$43,625,055**

13,271 Awards

\* Total includes Florida Prepaid



**Machen Florida  
Opportunity Scholars**

**\$11,778,138**

1,180 Awards



**Pell Grants**

**\$44,070,787**

10,837 Awards



**Florida Bright Futures**

**\$54,686,249**

23,421 Awards



**I. Douglas Turner**

**\$15,712,968**

6,440 Awards

**Direct  
Loans  
Disbursed**

**\$258,262,385**

**Subsidized Loans**

**\$34,732,421**

9,506 Awards

**Unsubsidized Loans**

**\$169,688,213**

17,582 Awards

**PLUS Loans**

**\$20,687,790**

2,112 Awards

**Graduate PLUS Loans**

**\$33,153,961**

3,474 Awards



## UF STUDENT FINANCIAL AFFAIRS BY THE NUMBERS



Percentage of  
Enrolled Students  
Who Received Aid

**80%**

2016-17

Total Aid Disbursed  
**\$589,731,685**

2016-17

(does not include Florida Prepaid)



2016-17 Undergraduate

Cost of  
Attendance  
**\$21,230**



**89%**

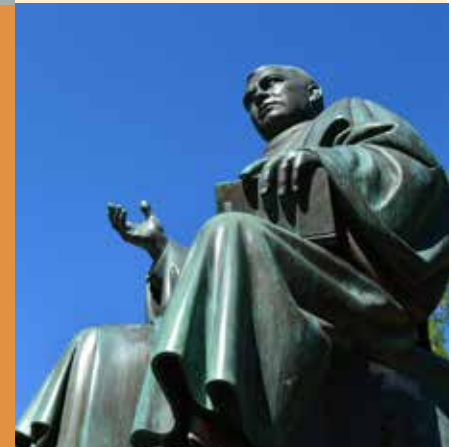
In-State Freshman  
Receiving  
Bright Futures

2016-17



**61%**

of UF undergrads  
graduate with no  
student loan debt.



## UF STUDENT FINANCIAL AFFAIRS BY THE NUMBERS

Total Aid  
Recipients

**48,553**

2016-17



**97%**

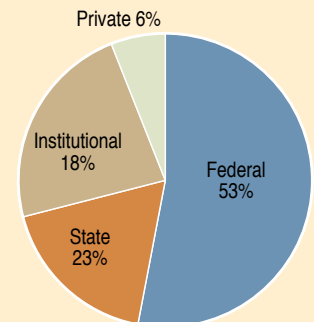
Freshman  
Retention Rate



Scholarships  
Awarded

**45,686**

2016-17



Source of Funds

2016-17

Federal Direct Loan  
2013 Cohort  
Default Rate

**2.6%**

National Average is 11.3%  
3 Year Official



UF undergraduates'  
average  
indebtedness is

**\$22,188**

compared with the  
national average of  
\$30,100.





## UF RANKINGS

**#1**

**Top 50 Best  
Value Colleges**

Value Colleges 2017

**#4**

Forbes list of  
“America’s  
Top 25 Best  
Value Colleges”

2017

**#2**

in Kiplinger’s  
“Best Values in  
Public Colleges”

2017

**#9**

“Top Public Universities”  
in U.S. News &  
World Report Rankings

2018

**#10**

Money magazine’s  
“Best Colleges for your  
Money”  
among Public  
Institutions

2017

**#6**

UF’s Rank Nationally in  
Helping Low-Income  
Students get a  
College Education

The New York Times, 2017

**#1**

in Graduate  
Employability  
among Public  
Institutions

Times Higher Ed, 2017

**#12**

Best Online  
Bachelor’s  
Programs

U.S. News & World Report, 2018

**#1**

Best College  
in Florida

Schools.com, 2017

**#3**

for Licensing  
Technologies

2016

**#6**

BestColleges.com  
“Best Career Services”  
List of top colleges that  
will get you a job.

2016

**#3**

Nationally in  
moving ideas from  
the lab to the  
real world

Milken Institute, 2017



**Student Financial Affairs**

**2016-17**

# **FACT BOOK**

fiscal summary

## Summary of Student Aid

	Number of Awards	Total Awards	Total Recipients*	Amount Disbursed	Total
<b>Private Donor Awards</b>	6,324			24,833,867	
		<b>6,324</b>	<b>4,827</b>		<b>\$24,833,867</b>
<b>Employment</b>					
Federal Work-Study Program	1,084			2,065,245	
Other Personnel Services	10,310			22,238,568	
FWEP	83			123,978	
		<b>11,477</b>	<b>10,954</b>		<b>\$24,427,791</b>
<b>Grants</b>					
Academic Competitiveness Grant	0			0	
Athletic	962			11,441,494	
Federal Pell	10,837			44,070,787	
Federal Supplemental (SEOG)	1,718			2,886,756	
Florida Student Assistance	3,310			6,785,122	
Graduate	2,676			5,108,581	
I. Douglas Turner	6,440			15,712,968	
Metta Heathcote	89			76,539	
Miscellaneous	168			576,957	
SMART	0			0	
TEACH	13			37,223	
UF Micro Grant	70			119,878	
		<b>26,283</b>	<b>15,260</b>		<b>\$86,816,305</b>
<b>Scholarships</b>					
Alliance Partner	50			154,687	
Benacquisto Scholarship***	370			6,505,886	
Brecht	59			56,000	
Dental/Disadvantage	34			638,588	
Florida Academic Scholars**	15,722			40,473,626	
Florida Top Scholars**	121			138,116	
Florida Vocational Gold Seal**	0			0	
General & Special	605			834,954	
Honorably Discharged Graduate Assistance	61			27,000	
In-State Matriculation Waivers	7,285			49,508,745	
Lombardi	40			178,729	
Machen Florida Opportunity Scholars	1,349			11,778,138	
Medical/Disadvantage	0			0	
Miscellaneous	13			25,000	
Miscellaneous Other State	73			360,592	
National Merit	0			0	
National Merit Stipend	348			327,500	
Out-of-State Matriculation Waivers	2,296			15,685,669	

\* "Total Recipients" is an unduplicated count of students receiving each aid type.

\*\* These four scholarships are part of the Florida Bright Futures Scholar's Program.

\*\*\* In 2016, the Florida Department of Education renamed the Florida Incentive Scholarship to the Benacquisto Scholarship.

## Summary of Student Aid

	Number of Awards	Total Awards	Total Recipients*	Amount Disbursed	Total
<b>Scholarships (continued)</b>					
Presidential Academic	398			1,970,000	
Presidential Achievement	0			0	
UF College Awarded	9,100			34,401,761	
UF Gold	79			624,000	
UF Merit	0			0	
UF Platinum	49			490,000	
University Academic	1			4,000	
US National Service	55			198,196	
		45,686	35,532		\$178,455,694
<b>Loans</b>					
Arthur L. Wallace	25			78,667	
Dentistry	113			912,072	
Grad PLUS	3,474			33,153,961	
Medical	19			147,375	
Perkins	744			3,240,827	
PLUS	2,112			20,687,790	
Private	944			11,254,110	
Short-Term	310			457,525	
Student Aid for Education	24			50,453	
Subsidized Stafford	9,506			34,732,421	
UF College Awarded	144			586,614	
UF Long-Term	0			0	
Unsubsidized Stafford	17,582			169,688,213	
Veterinary Medicine	53			208,000	
		35,050	17,831		\$275,198,028
<b>Total</b>		124,820	48,553		\$589,731,685
<b>Other Programs</b>					
	Number of Awards		Number of Recipients*		Total
Florida Prepaid	13,271		13,271		\$43,625,055

\* "Total Recipients" is an unduplicated count of students receiving each aid type.



## Summary of Student Aid Awards, Academic Year 2007-08 through Academic Year 2016-17

	2016-17	2015-16	2014-15	2013-14	2012-13	2011-12	2010-11	2009-10	2008-09	2007-08
<b>Private Donor Awards</b>	<b>6,324</b>	<b>5,926</b>	<b>5,976</b>	<b>5,872</b>	<b>5,673</b>	<b>6,045</b>	<b>6,053</b>	<b>6,184</b>	<b>6,826</b>	<b>6,485</b>
<b>Employment</b>										
Federal Work Study Program	1,084	1,050	1,083	659	854	1,010	986	1,519	1,048	1210
Other Personnel Services	10,310	9,744	9,322	8,933	8,973	6,458	6,179	5,914	5,634	5,330
FWEP	83	83	50	95	49	128	0	0	0	0
<b>Total Employment</b>	<b>11,477</b>	<b>10,877</b>	<b>10,455</b>	<b>9,687</b>	<b>9,876</b>	<b>7,596</b>	<b>7,165</b>	<b>7,433</b>	<b>6,682</b>	<b>6,540</b>
<b>Grants</b>										
Academic Competitiveness	0	0	0	0	0	0	2,965	2,414	1,947	1,587
Athletic	962	844	801	802	828	798	588	724	401	1,423
Federal Pell	10,837	11,286	11,547	11,622	11,626	11,846	11,081	9,573	8,018	7,556
Federal Supplemental	1,718	2,617	2,207	2,173	2,827	3,292	2,383	3,096	1,959	1,977
Florida Student Assistance	3,310	4,078	3,923	2,923	3,758	4,642	3,564	3,484	4,255	4,586
Graduate	2,676	2,276	2,331	2,012	2,730	1,500	1,954	2,801	1,647	1,663
I. Douglas Turner	6,440	5,514	6,058	5,412	5,925	7,247	5,222	5,606	4,368	4,060
Metta Heathcote	89	97	100	117	152	132	118	113	142	139
Miscellaneous	168	218	230	205	239	181	157	245	357	426
SMART	0	0	0	0	0	0	2,093	1,796	860	634
TEACH	13	12	8	10	11	12	16	12	0	0
UF Micro Grant	70	0	0	0	0	0	0	0	0	0
<b>Total Grants</b>	<b>26,283</b>	<b>26,942</b>	<b>27,205</b>	<b>25,276</b>	<b>28,096</b>	<b>29,650</b>	<b>30,141</b>	<b>29,864</b>	<b>23,954</b>	<b>24,051</b>
<b>Scholarships</b>										
Alliance Partner	50	77	78	90	92	110	126	144	144	140
Benacquisto Scholarship	370	233	81	0	0	0	0	0	0	0
Brecht	59	66	93	80	106	108	115	116	148	80
Dental / Disadvantaged	34	43	43	39	43	17	16	9	10	21
Florida Academic Scholars	15,722	15,389	15,411	15,801	15,309	15,413	15,683	15,574	14,652	13,916
Florida Medallion	7,578	8,477	9,199	9,731	9,837	10,305	10,559	11,138	12,172	12,325
Florida Top Scholar	121	114	126	136	135	134	151	142	144	137
Florida Vocational Gold Seal	0	5	30	53	67	64	43	31	23	18
General & Special	605	501	498	545	577	577	590	579	511	487
Honorably Discharged Graduate Assist	61	69	63	0	0	0	0	0	0	0
I/S Matriculation Waivers	7,285	7,225	7,012	7,055	7,375	7,741	8,008	8,655	8,572	8,561
Lombardi	40	9	39	38	38	39	42	9	30	31
Machen Florida Opportunity Scholars	1,349	1,471	1,324	1,337	1,315	1,370	1,409	1,358	741	425
Medical / Disadvantaged	0	0	0	0	0	12	14	20	0	0
Miscellaneous	13	9	7	9	11	11	10	11	9	9
Miscellaneous Other State	73	64	55	47	48	49	503	491	560	545
National Merit	0	135	296	448	639	671	672	797	1,003	1,091
National Merit - Stipend	348	333	321	422	560	594	600	711	862	931
Out-of-State Matriculation Waivers*	2,296	1,990	1,735	1,763	1,855	1,754	1,562	1,492	1,298	1,209
Presidential Academic	398	279	201	286	346	447	522	508	784	875
President Achievement	0	0	0	19	44	56	84	101	0	0
UF College Awarded	9,100	8,700	8,675	8,525	8,588	8,516	8,694	7,738	7,811	7,796
UF Gold	79	66	122	168	193	194	170	132	148	131

\* Beginning 05-06 students receiving graduate fellowships and assistants were given Florida residency classification for tuition purposes.

## Summary of Student Aid Awards, Academic Year 2007-08 through Academic Year 2016-17 (continued)

	2016-17	2015-16	2014-15	2013-14	2012-13	2011-12	2010-11	2009-10	2008-09	2007-08
<b>Scholarships</b>										
UF Merit	0	0	51	0	0	0	0	0	0	0
UF Platinum	49	43	102	128	128	103	65	31	43	33
University Academic	1	11	10	1	14	0	9	16	61	57
US National Service	55	46	37	0	0	0	0	0	0	0
<b>Total Scholarships</b>	<b>45,686</b>	<b>45,355</b>	<b>45,455</b>	<b>45,584</b>	<b>46,759</b>	<b>47,282</b>	<b>48,232</b>	<b>49,582</b>	<b>49,876</b>	<b>49,695</b>
<b>Loans</b>										
Arthur L. Wallace Loan	25	17	22	19	10	6	0	2	13	16
Dentistry	113	2	44	42	17	27	22	49	36	37
Grad PLUS	3,474	3,345	3,344	3,454	3,381	3,262	2,582	1,958	1,237	0
Medical	19	22	13	20	20	20	2	11	28	7
Perkins	744	1,441	1,803	1,580	1,135	1,328	1,606	1,695	2,246	2,617
PLUS	2,112	1,848	1,507	1,238	1,134	979	862	880	860	1,761
Private Loans	944	862	718	726	688	567	420	393	752	793
Short-Term Loan	310	322	382	482	459	632	682	678	630	640
Student Aid for Education	24	39	37	92	92	82	51	73	203	295
Subsidized Stafford/GSL	9,506	9,805	10,051	9,985	11,256	18,309	16,943	16,253	15,423	14,837
UF College-Awarded	144	171	152	190	188	217	167	225	175	129
UF Long-Term	0	0	5	3	1	0	0	1	7	9
Unsubsidized Stafford	17,582	17,678	17,775	17,413	18,605	17,300	16,257	16,589	14,716	14,273
Veterinary Medicine	53	2	11	22	9	10	11	5	8	9
<b>Total Loans</b>	<b>35,050</b>	<b>35,554</b>	<b>35,864</b>	<b>35,266</b>	<b>36,995</b>	<b>42,739</b>	<b>39,605</b>	<b>38,812</b>	<b>36,334</b>	<b>35,423</b>
<b>Total Awards</b>	<b>124,820</b>	<b>122,708</b>	<b>125,064</b>	<b>124,486</b>	<b>124,589</b>	<b>133,666</b>	<b>131,128</b>	<b>131,753</b>	<b>129,691</b>	<b>122,580</b>
<b>Total Unduplicated Recipients</b>	<b>48,553</b>	<b>47,654</b>	<b>46,491</b>	<b>46,193</b>	<b>45,995</b>	<b>47,400</b>	<b>47,441</b>	<b>47,807</b>	<b>44,379</b>	<b>43,570</b>
<b>Other Programs</b>										
Florida Prepaid	13,271	13,047	12,843	12,367	11,665	11,356	10,801	11,131	12,536	11,613

# Summary of Student Aid Disbursed, Academic Year 2007-08 through Academic Year 2016-17

	2016-17	2015-16	2014-15	2013-14	2012-13	2011-12	2010-11	2009-10	2008-09	2007-08
<b>Private Donor Awards</b>	<b>\$24,833,867</b>	<b>\$24,584,902</b>	<b>\$22,559,699</b>	<b>\$21,437,962</b>	<b>\$20,038,266</b>	<b>\$20,375,234</b>	<b>\$19,075,045</b>	<b>\$18,445,013</b>	<b>\$20,604,051</b>	<b>\$17,769,008</b>
<b>Employment</b>										
Federal Work Study Program	2,065,245	2,549,140	1,826,760	1,500,326	2,033,669	1,838,024	1,997,113	2,890,446	1,772,948	1,660,296
Other Personnel Services	22,238,568	20,712,696	18,960,113	18,369,607	18,244,141	16,602,514	15,125,504	13,449,842	12,060,085	10,542,697
FWEP	123,978	123,526	90,431	76,538	85,027	96,302	0	0	0	0
<b>Total Employment</b>	<b>\$24,427,791</b>	<b>\$23,385,362</b>	<b>\$20,877,304</b>	<b>\$19,946,471</b>	<b>\$20,362,837</b>	<b>\$18,536,840</b>	<b>\$17,122,617</b>	<b>\$16,340,288</b>	<b>\$13,833,033</b>	<b>\$12,202,993</b>
<b>Grants</b>										
Academic Competitiveness	0	0	0	0	0	0	2,127,779	2,138,512	1,828,875	1,640,474
Athletic	11,441,494	11,031,814	9,625,361	9,285,528	9,000,411	8,627,019	8,337,186	7,537,728	6,667,469	5,647,579
Federal Pell	44,070,787	45,373,975	47,317,954	46,552,588	45,739,492	45,813,968	49,908,204	46,112,705	26,598,608	23,096,648
Federal Supplemental	2,886,756	2,852,275	2,860,244	2,786,401	2,810,691	2,821,125	2,847,992	2,981,453	2,088,294	2,819,251
Florida Student Assistant	6,785,122	6,557,969	6,555,371	6,061,458	6,309,937	6,426,514	6,604,506	6,509,580	6,693,521	6,920,607
Graduate	5,108,581	4,566,720	4,494,065	4,325,444	4,714,113	2,947,520	3,186,815	4,645,212	2,929,364	2,316,126
I. Douglas Turner	15,712,968	14,848,113	15,385,441	15,305,996	15,226,065	8,869,446	14,063,841	12,849,589	8,175,513	11,069,750
Metta Heathcote	76,539	85,164	90,260	105,430	98,601	93,757	87,459	86,180	136,073	106,011
Miscellaneous	576,957	723,640	709,038	631,925	787,215	575,427	400,984	601,687	760,622	716,461
SMART	0	0	0	0	0	0	6,089,562	5,611,683	2,094,208	2,510,835
TEACH	37,223	31,162	21,627	34,931	32,820	39,500	54,000	53,500	28,000	0
UF Micro Grant	119,878	0	0	0	0	0	0	0	0	0
<b>Total Grants</b>	<b>\$86,816,305</b>	<b>\$86,070,832</b>	<b>\$87,059,361</b>	<b>\$85,089,701</b>	<b>\$84,719,345</b>	<b>\$76,214,276</b>	<b>\$93,708,328</b>	<b>\$89,127,829</b>	<b>\$58,000,547</b>	<b>\$56,843,742</b>
<b>Scholarships</b>										
Alliance Partner	154,687	239,062	237,499	276,562	282,811	322,811	359,538	402,179	408,810	431,184
Benacquisto Scholarship	6,505,886	3,907,805	1,319,533	0	0	0	0	0	0	0
Brecht	56,000	63,500	138,000	115,500	102,000	101,500	112,500	113,500	113,500	143,000
Dental / Disadvantaged	638,588	645,000	645,000	585,000	645,000	124,503	114,696	77,931	106,166	92,811
Florida Academic	40,473,626	39,660,162	39,919,758	41,407,737	39,602,269	40,371,014	50,916,216	51,300,661	55,888,487	51,823,064
Florida Medallion	14,074,507	15,629,582	16,985,350	18,245,275	18,148,273	19,155,424	24,246,921	25,950,020	27,276,925	26,103,235
Florida Top Scholar	138,116	131,516	138,908	154,572	160,046	155,058	213,533	206,442	202,311	207,560
Florida Vocational Gold Seal	0	3,927	32,340	70,994	94,875	100,776	90,334	71,535	31,244	50,290
General & Special	834,954	698,529	834,231	1,007,272	980,693	1,015,747	1,075,184	1,016,514	918,367	696,264
Honorably Discharged Graduate Assist	27,000	36,300	51,900	0	0	0	0	0	0	0
I / S Matriculation Waivers	49,508,745	47,195,193	44,884,427	44,332,223	46,448,814	45,761,674	42,277,051	39,113,555	33,910,029	30,324,784
Lombardi	178,729	12,253	174,463	193,529	182,951	209,000	196,178	8,177	192,425	197,400
Machen Florida Opportunity Scholars	11,778,138	10,772,082	10,982,732	10,214,296	12,136,788	11,629,377	7,548,792	7,272,896	5,538,247	3,641,025
Medical / Disadvantaged	0	0	0	0	0	60,522	93,083	139,624	162,655	0
Miscellaneous	25,000	17,000	13,000	16,000	19,000	22,000	19,000	22,000	17,000	18,000
Miscellaneous Other State	360,592	327,506	268,085	237,309	227,432	231,924	866,952	883,229	1,156,951	965,892
National Merit	0	98,250	246,978	372,000	526,847	567,055	575,250	1,811,646	3,010,675	4,554,778
National Merit-Stipend	327,500	336,200	323,850	362,100	434,650	479,980	498,900	639,510	728,357	830,125
O / S Matriculation Waivers*	15,685,669	13,641,187	14,111,908	13,951,177	16,668,895	17,663,171	15,392,784	13,919,104	11,811,031	10,098,629
Presidential Academic	1,970,000	1,361,293	969,877	982,127	1,011,681	1,345,375	1,041,625	1,019,125	1,104,290	1,546,750
President Achievement	0	0	0	36,000	87,000	111,000	166,000	201,000	230,995	0
UF College Awarded	34,401,761	31,143,999	29,779,140	27,978,481	27,501,766	27,181,161	26,226,971	22,252,746	21,271,904	21,512,267
UF Gold	624,000	508,000	918,412	1,041,465	1,085,000	944,000	499,500	388,500	387,000	433,500

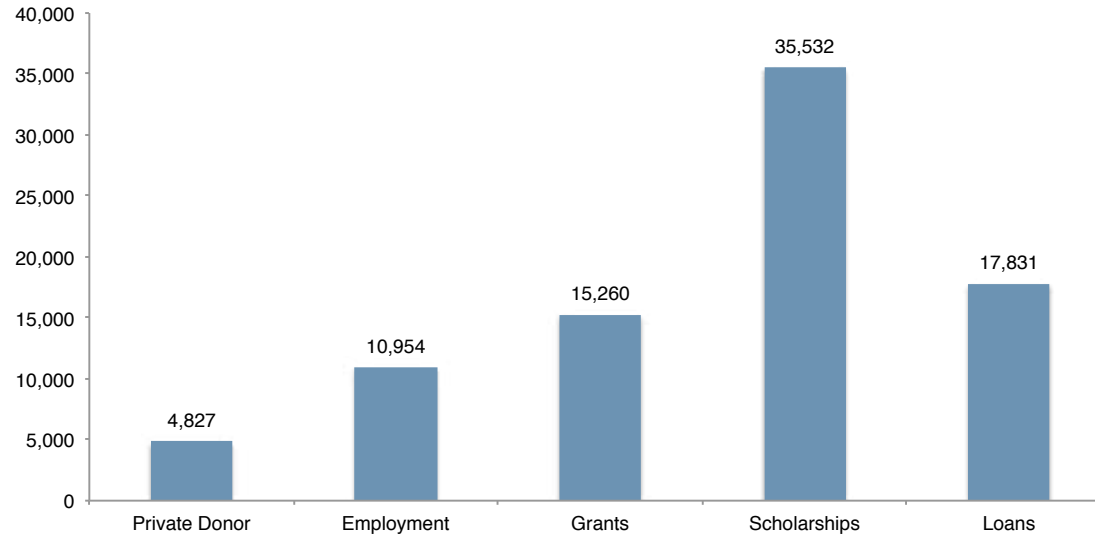
\* Beginning 05-06 students receiving graduate fellowships and assistants were given residency classification for tuition purposes.

# Summary of Student Aid Disbursed, Academic Year 2007-08 through Academic Year 2016-17 (continued)

	2016-17	2015-16	2014-15	2013-14	2012-13	2011-12	2010-2011	2009-2010	2008-09	2007-08
<b>Scholarships (continued)</b>										
UF Merit	0	0	25,250	0	0	0	0	0	0	0
UF Platinum	490,000	407,889	985,206	1,035,000	1,024,737	764,000	258,000	124,000	140,000	166,000
University Academic	4,000	28,000	26,000	4,000	32,000	0	16,000	10,238	44,566	75,254
US National Service	198,196	156,499	119,493	0	0	0	0	0	0	0
<b>Total Scholarships</b>	<b>\$178,455,694</b>	<b>\$167,020,734</b>	<b>\$164,131,340</b>	<b>\$162,618,619</b>	<b>\$167,403,528</b>	<b>\$168,317,072</b>	<b>\$172,805,008</b>	<b>\$166,944,132</b>	<b>\$164,651,935</b>	<b>\$153,911,812</b>
<b>Loans</b>										
Arthur L. Wallace	78,667	48,596	71,345	52,598	21,168	21,000	0	2,987	7,200	35,192
Dentistry	912,072	9,000	308,000	228,000	187,804	243,741	110,500	338,800	371,400	420,000
Grad PLUS	33,153,961	32,369,971	28,954,005	33,096,922	29,749,520	27,184,305	19,420,893	11,773,285	11,391,953	7,742,031
Medical	147,375	281,170	83,400	133,022	126,065	143,000	9,000	64,500	60,404	269,248
Perkins	3,240,827	5,502,536	6,419,577	4,773,863	4,043,285	3,814,365	3,349,759	3,099,130	2,992,419	6,708,735
PLUS	20,687,790	16,686,046	13,208,216	11,006,416	10,078,096	8,468,393	6,644,058	5,782,925	5,182,637	5,910,489
Private	11,254,110	9,599,528	7,596,699	7,107,091	6,783,728	5,216,272	3,856,666	3,547,074	5,362,080	6,512,614
Short-Term Loan	457,525	411,649	538,190	563,172	536,535	706,859	832,466	773,399	775,572	689,415
Student Aid for Education	50,453	93,310	88,356	210,647	216,514	188,878	113,094	159,338	233,187	433,971
Subsidized Stafford	34,732,421	34,953,735	36,188,991	35,490,513	40,443,799	91,106,912	83,419,583	77,858,898	76,207,473	72,105,710
UF College Awarded	586,614	658,518	620,570	892,441	833,291	848,154	742,659	844,257	689,396	650,353
UF Long-Term	0	0	7,500	3,012	2,500	0	0	2,500	0	13,906
Unsubsidized Stafford	169,688,213	171,250,268	172,353,384	174,017,704	176,225,566	125,632,939	120,374,841	116,452,281	112,818,577	95,757,691
Veterinary Medicine	208,000	18,570	66,848	134,730	43,000	49,000	63,000	78,000	72,000	128,000
<b>Total Loans</b>	<b>\$275,198,028</b>	<b>\$271,882,897</b>	<b>\$266,505,081</b>	<b>\$267,710,131</b>	<b>\$269,290,871</b>	<b>\$263,623,818</b>	<b>\$238,936,519</b>	<b>\$220,777,374</b>	<b>\$216,164,298</b>	<b>\$197,377,355</b>
<b>Total Aid Disbursed</b>	<b>\$589,731,685</b>	<b>\$572,944,727</b>	<b>\$561,132,785</b>	<b>\$556,802,884</b>	<b>\$561,814,847</b>	<b>\$547,067,240</b>	<b>\$541,647,517</b>	<b>\$511,634,636</b>	<b>\$473,253,864</b>	<b>\$438,104,910</b>
<b>Other Programs</b>										
Florida Prepaid	\$43,625,055	\$42,567,883	\$41,425,220	\$39,578,666	\$36,181,369	\$32,292,722	\$29,117,433	\$28,900,122	\$28,469,947	\$30,520,565

## Financial Aid By Type: Awards and Recipients

2016-17 Recipients by Aid Type

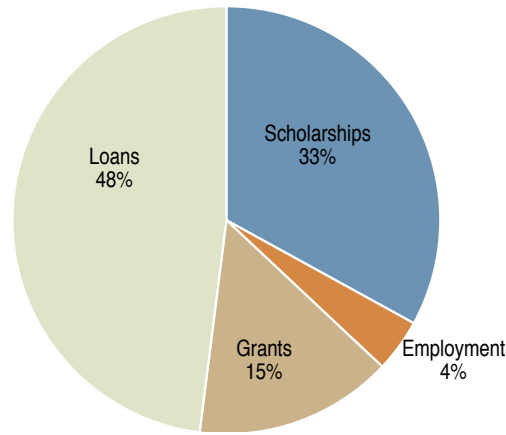


Year	Private Donor		Employment		Grants		Scholarships		Loans		Total	
	Awards	Recipients	Awards	Recipients	Awards	Recipients	Awards	Recipients	Awards	Recipients	Awards	Recipients
2016-17	6,324	4,827	11,477	10,954	26,283	15,260	45,686	35,532	35,050	17,831	124,820	48,553
2015-16	5,926	4,599	10,877	10,431	26,942	15,181	45,355	35,357	35,554	17,995	124,654	47,683
2014-15	5,976	4,616	10,455	9,877	27,205	15,523	45,609	35,342	35,864	18,132	125,109	46,491
2013-14	5,872	4,650	9,687	9,380	25,276	15,254	46,721	36,097	35,266	18,123	122,822	46,193
2012-13	5,673	4,456	9,876	9,561	28,096	16,045	47,320	36,113	36,995	19,170	127,960	45,995
2011-12	6,045	4,695	7,596	7,146	29,650	15,172	48,285	36,675	42,739	19,307	134,045	47,400
2010-11	6,053	4,758	7,165	6,778	30,141	14,385	49,647	36,909	39,605	18,046	132,611	47,441
2009-10	6,184	4,746	7,433	6,753	29,864	14,388	49,803	37,670	38,812	17,822	132,096	47,807
2008-09	7,297	5,458	6,712	6,239	23,292	11,551	50,454	37,799	37,816	17,577	125,571	46,325
2007-08	6,826	5,217	6,682	6,234	23,954	11,450	49,726	37,013	36,334	17,469	123,522	44,379

Source: Summary of Student Aid; Financial Aid Database

## Financial Aid By Type: Dollars

### 2016-17 Dollars Paid by Aid Type

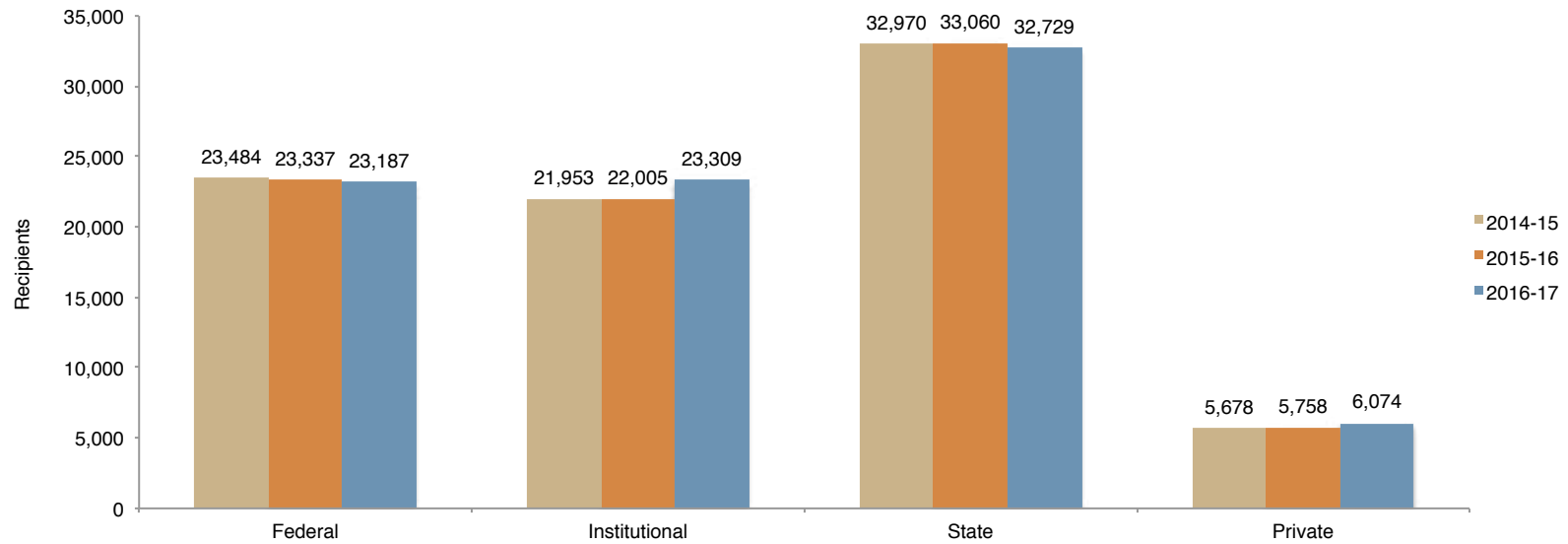


Year	Employment		Grants		Scholarships		Loans		Total	
	Amount	%	Amount	%	Amount	%	Amount	%	Amount	%
2016-17	\$24,427,791	4%	\$86,816,305	15%	\$203,289,561	33%	\$275,198,028	48%	\$589,731,685	100%
2015-16	\$23,385,362	4%	\$86,070,832	15%	\$191,605,636	33%	\$271,882,897	48%	\$572,944,727	100%
2014-15	\$20,877,304	4%	\$87,059,361	16%	\$186,691,039	33%	\$266,505,081	47%	\$561,132,785	100%
2013-14	\$19,946,471	4%	\$85,089,701	15%	\$184,056,581	33%	\$267,710,131	48%	\$556,802,884	100%
2012-13	\$20,362,837	4%	\$84,719,345	15%	\$187,441,794	33%	\$269,290,871	48%	\$561,814,847	100%
2011-12	\$18,536,840	3%	\$76,214,276	14%	\$188,692,306	35%	\$263,623,818	48%	\$547,067,240	100%
2010-11	\$17,122,617	3%	\$93,708,328	17%	\$191,880,053	36%	\$238,936,519	44%	\$541,647,517	100%
2009-10	\$16,340,288	3%	\$89,127,829	17%	\$185,389,145	36%	\$220,777,374	44%	\$511,634,636	100%
2008-09	\$13,833,033	3%	\$58,000,547	12%	\$185,255,986	39%	\$216,164,298	46%	\$473,253,864	100%
2007-08	\$12,202,993	3%	\$56,843,742	13%	\$171,680,820	39%	\$197,377,355	45%	\$438,104,910	100%

Source: Summary of Student Aid



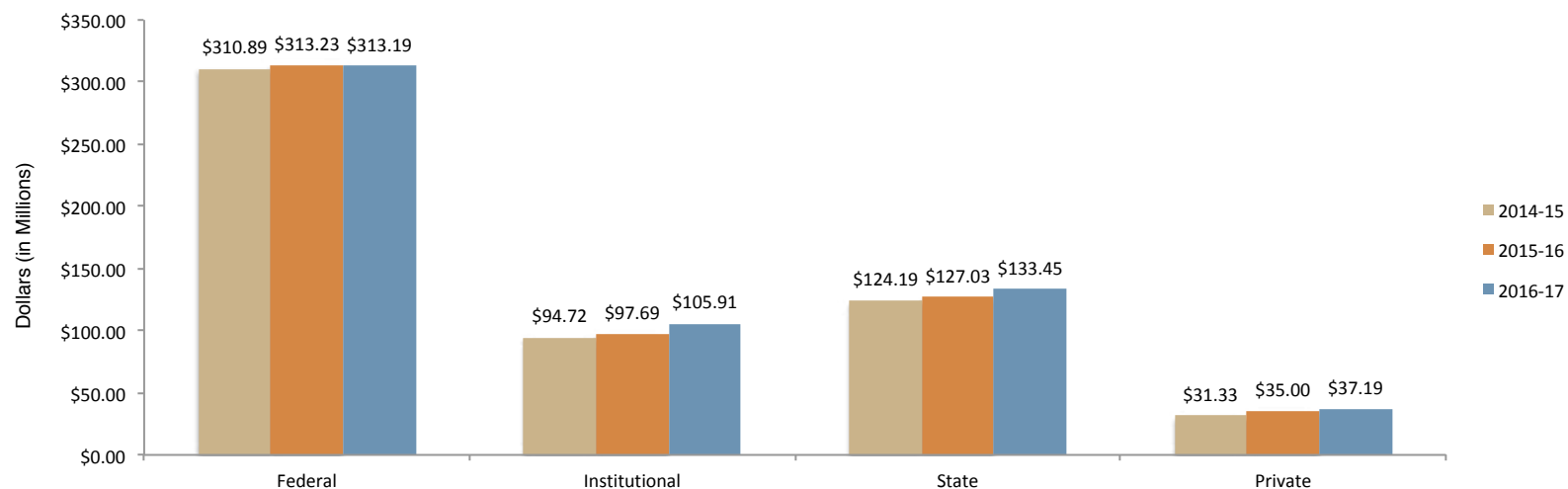
## Financial Aid by Source: Awards and Recipients



Year	Federal		Institutional		State		Private		Total	
	Awards	Recipients	Awards	Recipients	Awards	Recipients	Awards	Recipients	Awards	Recipients
2016-17	47,478	23,187	32,256	23,309	36,847	32,729	8,239	6,074	124,820	48,553
2015-16	49,330	23,337	30,055	22,005	37,664	33,060	7,605	5,758	124,654	47,654
2014-15	49,603	23,484	30,306	21,953	37,641	32,970	7,559	5,678	125,109	46,491
2013-14	48,392	23,606	29,292	21,153	37,550	33,490	7,588	5,811	122,822	46,193
2012-13	51,051	24,309	30,985	22,882	38,406	33,594	7,518	5,715	127,960	45,995
2011-12	57,296	24,798	28,759	19,921	40,200	34,199	7,790	5,865	134,045	47,400
2010-11	57,932	23,845	27,043	19,643	40,142	34,539	7,494	5,667	143,412	47,441
2009-10	56,035	22,804	28,049	23,823	40,242	35,041	7,770	6,248	132,096	47,807
2008-09	50,390	21,409	24,634	17,831	41,296	35,593	9,251	7,826	125,571	46,325
2007-08	48,525	21,269	25,363	18,233	40,924	35,239	8,710	8,685	123,522	44,379

Source: Financial Aid Database

## Financial Aid by Source: Dollars

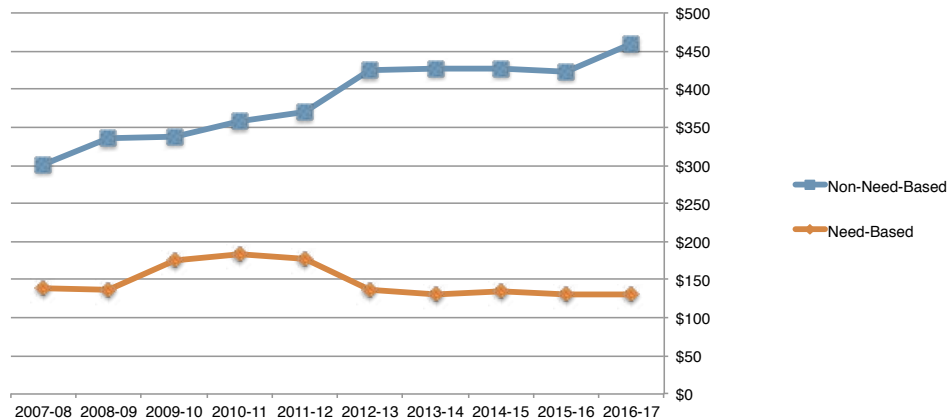


Year	Federal Amount	%	Institutional Amount	%	State Amount	%	Private Amount	%	Total Amount	%
2016-17	\$313,185,854	53%	\$105,905,173	18%	\$133,454,270	23%	\$37,186,388	6%	\$589,731,685	100%
2015-16	\$313,233,297	55%	\$97,685,803	17%	\$127,025,264	22%	\$35,000,363	6%	\$572,944,727	100%
2014-15	\$310,894,749	55%	\$94,715,522	17%	\$124,191,298	22%	\$31,331,216	6%	\$561,132,785	100%
2013-14	\$310,778,446	56%	\$91,820,958	17%	\$124,371,269	22%	\$29,832,211	5%	\$556,802,884	100%
2012-13	\$312,575,961	56%	\$93,488,705	16%	\$127,650,698	23%	\$28,099,483	5%	\$561,814,847	100%
2011-12	\$307,787,681	56%	\$82,384,670	15%	\$129,896,731	24%	\$26,998,158	5%	\$547,067,240	100%
2010-11	\$297,073,340	54%	\$79,707,011	15%	\$140,635,931	26%	\$24,231,235	5%	\$541,647,517	100%
2009-10	\$275,952,893	54%	\$77,211,493	15%	\$135,233,048	26%	\$23,237,202	5%	\$511,634,636	100%
2008-09	\$244,252,149	52%	\$67,554,341	14%	\$134,277,673	28%	\$27,169,702	6%	\$473,253,864	100%
2007-08	\$221,278,572	51%	\$67,015,068	15%	\$124,290,846	28%	\$25,520,424	6%	\$438,104,910	100%

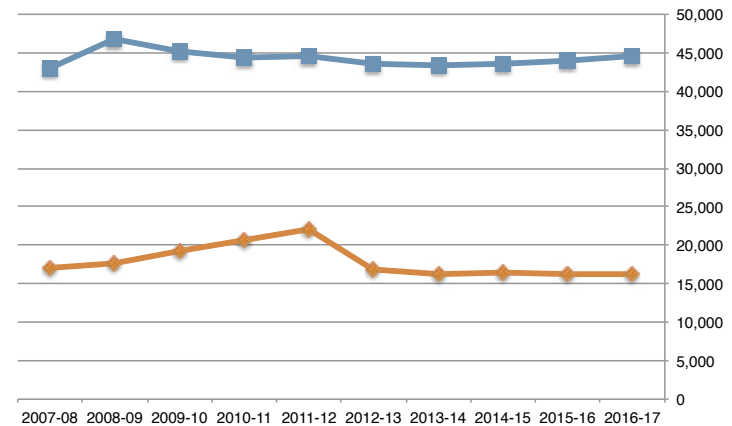
Source: Financial Aid Database

## Total Need and Non-Need-Based Aid

Dollars in Millions



Number of Recipients



Year	Need-Based			Non-Need-Based*			Totals		
	Awards	Recipients	Dollars	Awards	Recipients	Dollars	Awards	Recipients	Dollars
2016-17	38,991	16,188	\$130,192,115	85,829	44,495	\$459,539,570	124,820	48,553	\$589,731,685
2015-16	40,656	16,258	\$130,860,549	83,998	44,021	\$422,084,178	124,654	47,683	\$572,944,727
2014-15	41,510	16,379	\$135,177,195	83,599	43,471	\$425,955,591	125,109	46,491	\$561,132,785
2013-14	38,909	16,338	\$130,217,596	83,913	43,373	\$426,585,288	122,822	46,193	\$566,802,884
2012-13	42,713	16,930	\$136,696,461	85,247	43,595	\$425,118,386	127,960	45,995	\$561,814,847
2011-12	51,461	22,015	\$177,861,139	82,584	44,532	\$369,206,101	134,045	47,400	\$547,067,240
2010-11	51,306	20,569	\$183,290,088	81,305	44,336	\$358,357,430	132,611	47,441	\$541,647,517
2009-10	50,915	19,305	\$174,759,483	81,181	45,167	\$336,875,153	132,096	47,807	\$511,634,636
2008-09	42,959	17,714	\$137,616,028	82,612	46,866	\$335,637,836	125,571	46,325	\$473,253,864
2007-08	44,127	16,991	\$138,005,724	79,395	42,998	\$300,099,186	123,522	44,379	\$438,104,911

Source: Summary of Student Aid; Financial Aid Database

*The change in amounts from 11-12 to 12-13 can be attributed to the elimination of the Federal Direct Subsidized Loan, which is need-based for graduate and professional students as a result of the Budget Control Act of 2011. These students had increased eligibility for the Federal Direct Unsubsidized Loan, which is a non-need-based loan.*



**Student Financial Affairs**

**2016-17**

# **FACT BOOK**

## demographics

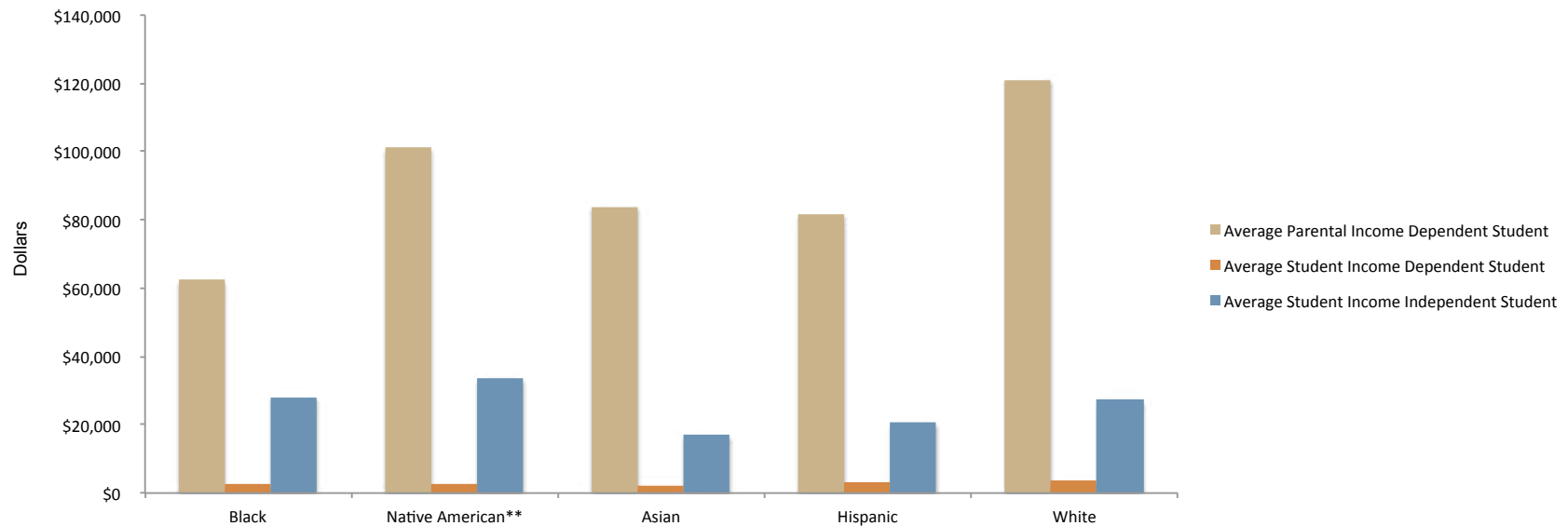
## Parental Median Income of Students

Year	Median Income	%<\$20,000	%>\$30,000	%>\$50,000	%>\$100,000
Fall 2016	\$115,000-119,999	7.13	84.34	75.66	53.79
Fall 2014	\$100,000-104,999	9.51	81.56	71.15	49.56
Fall 2012	\$100,000-104,999	8.43	85.51	74.23	50.70
Fall 2010	\$95,000-99,999	7.39	86.96	74.33	48.54
Fall 2008	\$100,000-104,999	5.63	89.79	78.31	50.73
Fall 2006	\$100,000-104,999	3.97	90.56	79.62	51.93
Fall 2004	\$95,000-99,999	4.26	91.05	78.82	47.03
Fall 2002	\$85,000-89,999	6.37	86.55	73.36	40.22
Fall 2000	\$85,000-89,999	5.91	88.34	75.21	43.24
Fall 1998	\$81,000 & above	5.94	88.79	75.38	n/a
Fall 1996	\$71,000-72,999	7.25	83.13	69.42	n/a
Fall 1994	\$63,000-64,999	8.04	80.88	63.68	n/a
Fall 1992	\$62,000-63,999	9.42	81.69	62.95	n/a
Fall 1990	\$60,000-61,999	n/a	80.69	n/a	n/a
Fall 1989	\$54,000-55,999	n/a	79.52	n/a	n/a
Fall 1988	\$54,000-55,999	n/a	80.66	n/a	n/a

Source: Survey of new freshman parents completed in the fall by the Accounting Section of Student Financial Affairs. Survey not completed every year.

Note: Income figures include both financial aid applicants and non-applicants.

## 2016-17 Average Income of Financial Aid Applicants by Race\*



	Average Parental Income Dependent Student	Average Student Income Dependent Student	Average Student Income Independent Student
Black	\$62,320	\$2,715	\$28,021
Native American**	\$101,104	\$2,711	\$33,452
Asian	\$83,945	\$2,185	\$16,984
Hispanic	\$81,630	\$2,963	\$20,585
White	\$121,040	\$3,592	\$27,197
Total Average Income	\$100,033	\$3,181	\$25,246

\* Only students who reported their race and provided income information are included.

\*\* Population of students in this category is less than 190; therefore, results may not be statistically significant.

Source: Financial Aid Database



## 2016-17 Financial Aid by Race\*

	Undergraduate		Graduate/Professional		Total	
	Recipients	Avg. Award	Recipients	Avg. Award	Recipients	Avg. Award
<b>Grants</b>						
Black	1,954	\$6,373	227	\$2,095	2,181	\$5,928
Native American	95	\$5,526	17	\$2,439	112	\$5,057
Asian	1,449	\$6,448	330	\$1,736	1,779	\$5,574
Hispanic	3,726	\$6,206	492	\$2,250	4,218	\$5,745
White	5,038	\$5,254	1,557	\$2,111	6,595	\$4,512
<b>Loans</b>						
Black	1,316	\$8,081	665	\$27,399	1,981	\$14,566
Native American	89	\$8,341	52	\$24,962	141	\$14,471
Asian	784	\$7,880	585	\$32,542	1,369	\$18,419
Hispanic	2,970	\$7,873	1,098	\$30,202	4,068	\$13,900
White	5,645	\$9,219	3,835	\$26,824	9,480	\$16,341
<b>Scholarships</b>						
Black	1,796	\$7,650	523	\$12,678	2,319	\$8,784
Native American	175	\$3,830	59	\$9,362	234	\$5,225
Asian	2,961	\$4,267	476	\$8,746	7,228	\$2,324
Hispanic	5,594	\$3,910	860	\$9,644	9,504	\$3,174
White	14,998	\$3,875	4,352	\$8,960	18,873	\$5,146
<b>Student Employment</b>						
Black	758	\$2,750	265	\$1,709	1,023	\$2,480
Native American	37	\$2,679	36	\$1,141	73	\$1,921
Asian	679	\$2,295	273	\$1,534	952	\$2,077
Hispanic	1,561	\$2,606	496	\$1,621	2,057	\$2,368
White	3,084	\$2,434	2,609	\$1,459	5,693	\$1,987
<b>All Aid**</b>						
(unduplicated totals)						
Black	2,815	\$13,822	916	\$28,143	3,731	\$17,338
Native American	230	\$8,855	90	\$21,477	320	\$12,405
Asian	3,510	\$8,466	929	\$26,041	4,439	\$12,144
Hispanic	7,514	\$9,642	1,591	\$27,257	9,105	\$12,720
White	18,403	\$7,832	6,966	\$21,384	25,369	\$11,553

\* Only students who reported their race are included.

\*\* All Aid category represents the average of total awards to financial aid recipients by race.

## Financial Aid Recipients by Race\*, Fiscal Year 2007-08 through Fiscal Year 2016-17

	2016-17	2015-16	2014-15	2013-14	2012-13	2011-12	2010-11	2009-10	2008-09	2007-08
<b>Grants</b>										
Black	2,181	2,228	2,238	2,339	2,458	2,510	2,648	2,799	2,632	2,457
Native American	112	106	111	112	95	110	83	89	60	42
Asian	1,779	1,762	1,759	1,739	1,892	1,672	1,596	1,574	1,275	1,085
Hispanic	4,218	4,076	4,030	3,695	3,662	3,441	3,127	3,045	2,476	2,138
White	6,595	6,575	6,901	6,893	7,361	6,846	6,242	6,965	5,680	5,086
<b>Loans</b>										
Black	1,981	2,019	2,116	2,196	2,294	2,360	2,331	2,428	2,486	2,445
Native American	141	141	136	137	154	159	138	126	91	81
Asian	1,369	1,322	1,318	1,295	1,454	1,185	1,307	1,212	1,161	1,095
Hispanic	4,068	4,003	3,867	3,627	3,663	3,476	3,028	2,869	2,610	2,548
White	9,480	9,773	9,933	10,075	10,772	10,958	10,453	10,471	10,555	10,678
<b>Scholarships</b>										
Black	2,319	2,348	2,470	2,652	2,764	2,963	3,055	3,183	3,123	3,141
Native American	234	222	208	217	227	233	221	216	179	141
Asian	7,228	6,634	6,336	3,278	3,311	3,281	3,297	3,106	2,978	2,781
Hispanic	9,504	9,175	9,038	6,065	5,787	5,612	5,510	5,305	4,927	4,512
White	18,873	18,975	19,267	20,472	20,394	20,949	21,419	22,156	23,247	23,621
<b>Student Employment</b>										
Black	1,023	1,024	1,031	983	1,057	983	963	1,048	1,051	1,085
Native American	73	63	57	50	48	38	25	26	22	14
Asian	952	900	820	727	726	552	503	465	434	425
Hispanic	2,057	1,864	1,616	1,465	1,386	1,122	1,086	1,023	936	936
White	5,693	5,517	5,383	5,201	5,164	3,659	3,547	3,364	2,969	3,179
<b>All Aid</b>			-							
(unduplicated totals)										
Black	3,731	3,723	3,699	3,785	3,902	4,089	4,324	4,501	4,501	4,479
Native American	320	303	289	301	300	308	282	265	222	180
Asian	4,439	4,216	4,091	4,044	4,071	4,015	4,007	3,830	3,617	3,385
Hispanic	9,105	8,705	8,315	7,857	7,388	7,138	6,971	6,683	6,244	5,824
White	25,369	25,441	25,228	25,475	25,392	25,945	26,540	27,427	28,340	28,824

\* Only students who reported their race are listed.

Source: Financial Aid Database

## Average Financial Aid Award by Race\*, Fiscal Year 2007-08 through 2016-17

	2016-17	2015-16	2014-15	2013-14	2012-13	2011-12	2010-11	2009-10	2008-09	2007-08
<b>Grants</b>										
Black	\$5,928	\$5,737	\$5,826	\$5,984	\$5,675	\$5,571	\$7,034	\$6,444	\$5,713	\$5,213
Native American	\$5,057	\$4,905	\$5,027	\$4,608	\$4,710	\$4,546	\$5,904	\$5,312	\$4,523	\$3,877
Asian	\$5,574	\$5,178	\$5,358	\$5,442	\$4,783	\$4,858	\$6,353	\$5,758	\$4,997	\$4,849
Hispanic	\$5,745	\$5,526	\$5,473	\$5,478	\$5,355	\$4,902	\$6,475	\$5,994	\$5,209	\$5,028
White	\$4,512	\$4,436	\$4,416	\$4,455	\$4,290	\$3,964	\$5,231	\$4,538	\$3,819	\$4,050
<b>Loans</b>										
Black	\$14,566	\$14,180	\$13,608	\$12,712	\$11,619	\$11,064	\$10,376	\$9,813	\$9,287	\$8,464
Native American	\$14,471	\$12,680	\$11,806	\$13,482	\$12,865	\$13,174	\$13,402	\$12,518	\$12,147	\$11,583
Asian	\$18,419	\$17,691	\$16,669	\$16,340	\$15,763	\$18,731	\$15,312	\$14,223	\$13,324	\$12,353
Hispanic	\$13,900	\$13,373	\$13,140	\$12,840	\$12,286	\$11,727	\$11,125	\$10,476	\$10,688	\$10,062
White	\$16,341	\$16,130	\$15,666	\$15,646	\$14,834	\$14,553	\$14,224	\$13,266	\$13,295	\$12,120
<b>Scholarships</b>										
Black	\$8,784	\$8,720	\$8,398	\$8,008	\$8,041	\$7,548	\$6,922	\$6,609	\$6,520	\$6,135
Native American	\$5,225	\$5,184	\$5,112	\$5,074	\$4,750	\$4,599	\$4,146	\$4,066	\$4,046	\$4,110
Asian	\$2,324	\$2,196	\$2,117	\$4,004	\$4,094	\$4,100	\$4,396	\$4,262	\$4,442	\$4,170
Hispanic	\$3,174	\$3,014	\$2,969	\$4,093	\$4,176	\$4,180	\$4,277	\$4,202	\$4,225	\$3,846
White	\$5,146	\$4,866	\$4,722	\$4,381	\$4,387	\$4,345	\$4,461	\$4,347	\$4,386	\$5,181
<b>Student Employment</b>										
Black	\$2,480	\$2,414	\$2,280	\$2,407	\$2,447	\$2,517	\$2,344	\$2,481	\$2,237	\$1,995
Native American	\$1,921	\$2,071	\$2,002	\$1,987	\$2,302	\$1,878	\$2,573	\$2,569	\$1,885	\$2,216
Asian	\$2,077	\$2,041	\$1,863	\$1,836	\$1,943	\$2,129	\$1,990	\$2,021	\$1,960	\$1,714
Hispanic	\$2,368	\$2,313	\$2,206	\$1,947	\$1,918	\$2,282	\$2,140	\$2,262	\$2,029	\$2,010
White	\$1,987	\$1,939	\$1,857	\$1,884	\$1,966	\$2,508	\$2,305	\$2,277	\$2,168	\$1,910
<b>All Aid**</b> (unduplicated totals)										
Black	\$17,338	\$17,286	\$17,552	\$17,310	\$16,764	\$16,037	\$15,313	\$14,552	\$13,516	\$12,265
Native American	\$12,405	\$11,846	\$11,561	\$11,839	\$12,058	\$12,420	\$11,774	\$11,302	\$9,651	\$9,509
Asian	\$12,144	\$11,602	\$11,325	\$11,148	\$11,529	\$11,195	\$11,392	\$10,569	\$9,931	\$9,191
Hispanic	\$12,720	\$12,409	\$12,419	\$12,026	\$12,376	\$11,719	\$11,452	\$10,910	\$10,170	\$9,551
White	\$11,553	\$11,392	\$11,379	\$11,299	\$11,460	\$11,042	\$10,741	\$10,008	\$9,542	\$8,842

\* Only students who reported their race are included.

\*\* All Aid category represents the average of total awards to financial aid recipients by race.

Source: Financial Aid Database

## 2016-17 Financial Aid By Gender\*

	Undergraduate		Graduate Professional		Total	
	Recipients	Average Award	Recipients	Average Award	Recipients	Average Award
<b>Grants</b>						
Male	5,309	\$6,620	983	\$2,235	6,274	\$5,956
Female	7,368	\$6,609	1,715	\$2,206	9,049	\$5,807
<b>Loans</b>						
Male	4,808	\$8,686	2,678	\$28,574	7,483	\$15,671
Female	6,379	\$9,101	3,830	\$27,122	10,273	\$15,625
<b>Scholarships</b>						
Male	11,603	\$4,197	5,314	\$17,102	16,926	\$8,246
Female	14,834	\$4,247	4,954	\$16,422	19,865	\$7,281
<b>Student Employment</b>						
Male	2,443	\$2,650	2,438	\$1,753	4,883	\$2,202
Female	3,623	\$2,564	2,426	\$1,768	6,069	\$2,246
<b>All Aid*</b>						
Male	14,881	\$8,876	7,089	\$24,527	21,978	\$13,876
Female	19,012	\$9,417	7,564	\$25,556	26,678	\$13,919

\* All Aid category represents the average total awards to male and female recipients. Only students who report their gender are included.

Source: Financial Aid Database.

## Financial Aid Recipients by Gender\*, Fiscal Year 2007-08 through 2016-17

	2016-17	2015-16	2014-15	2013-14	2012-13	2011-12	2010-11	2009-10	2008-09	2007-08
<b>Grants</b>										
Male	6,274	6,294	6,543	6,495	6,807	6,352	5,914	6,230	4,851	4,826
Female	9,049	8,938	9,021	8,769	9,253	8,833	8,463	8,811	6,717	6,591
<b>Loans</b>										
Male	7,483	7,526	7,643	7,714	8,229	8,302	7,858	7,774	7,758	7,743
Female	10,273	10,379	10,377	10,288	10,882	10,869	10,082	9,948	9,745	9,644
<b>Scholarships</b>										
Male	16,926	16,860	16,703	16,804	16,754	17,081	17,457	17,505	17,656	17,589
Female	19,865	19,805	19,952	20,256	20,206	20,848	21,007	21,097	21,009	20,517
<b>Student Employment</b>										
Male	4,883	4,758	4,605	4,352	4,562	3,244	3,097	3,000	2,800	2,783
Female	6,069	5,671	5,270	5,017	4,983	3,887	3,665	3,731	3,435	3,445
<b>All Aid*</b>										
Male	21,978	21,734	21,197	21,134	21,086	21,399	21,820	21,842	21,774	21,836
Female	26,678	26,048	25,439	25,201	25,058	25,635	25,846	26,113	25,753	25,393

\* All Aid category represents the average total awards to male and female recipients. Only students who report their gender are included.  
Source: Financial Aid Database

## Average Financial Aid Awards by Gender\*, Fiscal Year 2007-08 through Fiscal Year 2016-17

	2016-17	2015-16	2014-15	2013-14	2012-13	2011-12	2010-11	2009-10	2008-09	2007-08
<b>Grants</b>										
Male	\$5,956	\$5,748	\$5,596	\$5,608	\$5,382	\$5,146	\$6,618	\$5,988	\$5,147	\$5,088
Female	\$5,807	\$5,596	\$5,538	\$5,608	\$5,254	\$4,991	\$6,323	\$5,597	\$4,996	\$4,844
<b>Loans</b>										
Male	\$15,671	\$15,435	\$15,020	\$14,193	\$14,092	\$13,687	\$13,198	\$12,398	\$12,248	\$11,177
Female	\$15,625	\$15,237	\$14,814	\$14,608	\$13,969	\$13,642	\$13,255	\$12,371	\$12,314	\$11,371
<b>Scholarships</b>										
Male	\$8,246	\$7,968	\$7,781	\$7,586	\$7,744	\$7,811	\$7,815	\$7,436	\$6,676	\$6,359
Female	\$7,281	\$6,827	\$6,622	\$6,352	\$6,423	\$6,370	\$6,330	\$6,080	\$5,473	\$5,126
<b>Student Employment</b>										
Male	\$2,202	\$2,240	\$2,104	\$2,086	\$2,074	\$2,686	\$2,621	\$2,520	\$2,244	\$1,975
Female	\$2,246	\$2,204	\$2,116	\$2,141	\$2,154	\$2,520	\$2,394	\$2,343	\$2,202	\$1,945
<b>All Aid*</b>										
Male	\$13,876	\$13,681	\$13,731	\$13,628	\$13,839	\$13,480	\$13,171	\$12,426	\$11,212	\$10,462
Female	\$13,919	\$13,662	\$13,639	\$13,446	\$13,581	\$13,066	\$12,726	\$11,848	\$10,722	\$9,981

\* All Aid categories represent the average total awards to male and female recipients. Only students who report their gender are included.

Source: Financial Aid Database



## Aid by Classification

	2016-17		2015-16		2014-15	
	Recipients*	Dollars	Recipients*	Dollars	Recipients*	Dollars
<b>Freshman</b>						
Total	5,786	\$53,439,437	5,806	\$52,256,941	5,421	\$45,951,622
Scholarships	4,640	\$24,146,136	4,437	\$22,367,087	4,176	\$19,629,229
Grants	2,202	\$14,046,882	2,451	\$14,545,778	2,373	\$13,645,957
Loans	1,572	\$14,675,213	1,679	\$14,646,928	1,552	\$11,896,424
Work	417	\$571,206	446	\$697,148	539	\$780,012
<b>Sophomore</b>						
Total	1,966	\$20,424,347	1,918	\$18,225,181	1,982	\$18,941,035
Scholarships	1,567	\$6,208,377	1,519	\$5,858,499	1,707	\$6,350,130
Grants	809	\$7,634,254	806	\$6,631,923	797	\$6,813,418
Loans	654	\$6,106,166	653	\$5,262,992	680	\$5,295,668
Work	239	\$475,550	240	\$471,766	253	\$481,799
<b>Junior</b>						
Total	6,582	\$61,872,904	6,560	\$59,001,634	6,438	\$57,559,380
Scholarships	4,479	\$18,502,926	4,711	\$18,231,541	4,922	\$17,393,638
Grants	2,881	\$18,209,537	2,830	\$17,634,719	2,830	\$17,452,163
Loans	2,601	\$22,851,244	2,531	\$20,777,999	2,570	\$20,734,374
Work	994	\$2,309,197	1,001	\$2,357,375	877	\$1,979,205
<b>Senior</b>						
Total	15,828	\$147,573,207	15,400	\$139,159,234	15,401	\$142,192,612
Scholarships	12,710	\$51,646,944	12,785	\$47,260,242	13,117	\$48,939,660
Grants	5,869	\$38,940,157	5,886	\$36,947,536	6,251	\$38,236,255
Loans	5,507	\$46,354,093	5,587	\$45,592,249	5,815	\$46,628,065
Work	3,671	\$10,632,013	3,360	\$9,359,208	3,074	\$8,388,632
<b>Senior (fifth year)</b>						
Total	2,363	\$18,869,976	2,275	\$18,146,437	2,196	\$17,741,028
Scholarships	2,009	\$7,525,023	1,978	\$6,791,407	1,930	\$6,947,278
Grants	766	\$4,349,703	787	\$4,346,626	762	\$4,290,689
Loans	735	\$5,169,168	725	\$5,314,266	719	\$5,124,008
Work	698	\$1,826,082	590	\$1,694,137	551	\$1,379,053
<b>Post-Baccalaureate</b>						
Total	253	\$2,920,648	228	\$2,314,918	206	\$2,217,303
Scholarships	108	\$373,256	98	\$404,976	86	\$294,354
Grants	17	\$194,066	18	\$142,103	15	\$141,906
Loans	205	\$2,292,818	169	\$1,681,978	162	\$1,751,254
Work	23	\$60,508	31	\$85,861	23	\$32,788

\* Total "Recipients" is an unduplicated count.

Source: Financial Aid Database

## Aid by Classification (continued)

	2016-17		2015-16		2014-15	
	Recipients*	Dollars	Recipients*	Dollars	Recipients*	Dollars
<b>Master's Candidate</b>						
Total	4,930	\$54,981,265	4,788	\$56,027,953	4,242	\$51,724,964
Scholarships**	3,328	\$20,944,640	3,204	\$20,405,733	2,731	\$17,829,475
Grants	582	\$1,991,085	531	\$2,063,794	542	\$2,106,200
Loans	1,866	\$28,390,596	1,977	\$30,211,841	1,898	\$29,056,362
Work	1,514	\$3,654,944	1,507	\$3,346,585	1,286	\$2,732,927
<b>Specialist</b>						
Total	3,042	\$46,694,389	2,969	\$46,283,373	2,987	\$47,246,536
Scholarships**	2,349	\$27,882,429	2,250	\$25,771,953	2,255	\$25,966,914
Grants	291	\$736,437	296	\$788,013	347	\$921,864
Loans	1,014	\$15,802,040	1,065	\$17,280,954	1,096	\$17,968,746
Work	1,436	\$2,273,483	1,364	\$2,442,454	1,421	\$2,389,013
<b>Doctoral Candidate</b>						
Total	1,751	\$24,933,580	1,789	\$25,530,619	1,796	\$24,865,134
Scholarships**	1,666	\$20,279,962	1,706	\$20,751,191	1,705	\$19,845,526
Grants	14	\$39,000	11	\$28,500	15	\$42,000
Loans	211	\$2,854,428	202	\$2,817,427	226	\$3,067,809
Work	1,238	\$1,760,190	1,219	\$1,933,501	1,229	\$1,909,799
<b>First-Year Professional**</b>						
Total	889	\$27,953,419	853	\$25,922,109	922	\$27,327,546
Scholarships	409	\$3,514,604	336	\$2,885,958	454	\$3,533,546
Grants	310	\$477,813	315	\$463,316	241	\$311,075
Loans	781	\$23,851,768	759	\$22,465,816	791	\$23,355,562
Work	63	\$109,234	62	\$107,020	58	\$127,363
<b>Second-Year Professional**</b>						
Total	1,058	\$33,430,995	1,099	\$33,342,915	1,076	\$33,472,738
Scholarship	476	\$5,229,720	503	\$4,187,247	526	\$4,100,648
Grants	582	\$1,008,406	485	\$821,650	435	\$706,595
Loans	919	\$27,018,182	966	\$28,138,786	939	\$28,536,901
Work	152	\$174,687	146	\$195,233	102	\$128,594
<b>Third-Year Professional**</b>						
Total	1,074	\$33,171,437	1,020	\$32,434,304	947	\$30,198,214
Scholarships	456	\$4,041,517	454	\$3,824,738	451	\$3,484,277
Grants	591	\$1,138,152	487	\$919,295	499	\$921,276
Loans	923	\$27,765,575	872	\$27,535,280	838	\$25,603,296
Work	172	\$226,193	139	\$154,991	129	\$189,366

\* Total "Recipients" is an unduplicated count.

\*\* Professional students include law, veterinary medicine, medical, dental, and pharmacy students.

Source: Financial Aid Database

## Aid by Classification (continued)

	2016-17		2015-16		2014-15	
	Recipients*	Dollars	Recipients*	Dollars	Recipients*	Dollars
<b>Fourth-Year Professional**</b>						
Total	560	\$19,910,550	504	\$18,667,056	529	\$19,030,446
Scholarships	235	\$1,754,755	232	\$2,044,461	225	\$1,515,331
Grants	300	\$503,795	233	\$355,360	371	\$457,849
Loans	496	\$17,615,545	461	\$16,224,595	482	\$17,018,544
Work	43	\$36,455	42	\$42,641	64	\$38,722
<b>Sixth-Year Professional**</b>						
Total	35	\$684,311	35	\$730,499	34	\$728,000
Scholarships	0	0	0	0	0	0
Grants	0	0	0	0	0	0
Loans	35	\$684,311	35	\$730,499	34	\$728,000
Work	0	0	0	0	0	0
<b>Seventh-Year Professional**</b>						
Total	207	\$3,529,141	210	\$3,440,274	207	\$3,426,651
Scholarships	106	\$1,205,114	113	\$1,065,970	124	\$1,247,723
Grants	12	\$33,250	11	\$26,000	13	\$43,430
Loans	122	\$2,190,353	123	\$2,227,189	108	\$1,972,903
Work	66	\$100,424	72	\$121,115	89	\$162,595
<b>Eighth-Year Professional**</b>						
Total	149	\$2,652,622	157	\$2,706,209	123	\$2,169,620
Scholarships	112	\$1,582,168	118	\$1,633,785	87	\$1,171,557
Grants	16	\$36,610	13	\$36,600	6	\$30,500
Loans	56	\$948,119	60	\$942,636	50	\$908,053
Work	72	\$85,725	67	\$93,188	43	\$59,510
<b>Ninth-Year Professional**</b>						
Total	148	\$2,821,576	133	\$2,450,444	137	\$2,551,785
Scholarships	146	\$2,617,263	131	\$2,270,713	136	\$2,315,146
Grants	0	0	1	\$3,000	0	0
Loans	6	\$72,907	8	\$71,749	12	\$144,607
Work	105	\$131,406	90	\$104,982	101	\$92,032

\* Total "Recipients" is an unduplicated count.

\*\* Professional students include law, veterinary medicine, medical, dental, and pharmacy students.

Source: Financial Aid Database

## Aid by University of Florida College

College/School	Freshman		Sophomore		Junior		Senior	
	Recipients	Amount	Recipients	Amount	Recipients	Amount	Recipients	Amount
Accounting	12	\$130,671	56	\$380,606	94	\$646,655	240	\$1,678,311
Agriculture	100	\$873,257	362	\$3,143,994	1,025	\$9,572,552	2,130	\$19,860,036
Architecture	26	\$276,563	76	\$637,834	146	\$1,345,788	314	\$3,213,821
Business Administration	184	\$1,443,566	609	\$4,887,025	966	\$7,565,290	1,991	\$14,748,481
Building Construction	10	\$37,229	24	\$129,557	81	\$661,321	177	\$1,382,001
Dentistry	-	-	-	-	-	-	-	-
Education	6	\$60,356	45	\$372,084	79	\$629,135	89	\$833,581
Engineering	225	\$1,535,198	893	\$7,494,531	1,391	\$12,128,299	1,448	\$13,801,871
Fine Arts	32	\$323,718	105	\$1,043,638	278	\$2,576,005	509	\$5,053,031
Health & Human Performance	65	\$646,100	242	\$2,334,134	527	\$5,505,532	1,232	\$12,484,565
Health Related Professions	62	\$554,166	199	\$1,779,504	283	\$2,376,565	540	\$4,442,174
Journalism & Communications	68	\$632,368	272	\$2,555,724	523	\$4,809,251	1,391	\$13,890,913
Law	-	-	-	-	-	-	-	-
Liberal Arts & Sciences	664	\$6,612,839	1,578	\$17,319,318	2,700	\$27,418,614	5,695	\$54,555,950
Medicine	-	-	-	-	-	-	-	-
Medicine-Physician Assist.	-	-	-	-	-	-	-	-
Natural Resources & Envir.	3	\$18,087	16	\$130,007	25	\$199,389	59	\$561,556
Nursing	27	\$349,173	158	\$1,283,833	198	\$1,587,746	256	\$2,094,873
Pharmacy	5	\$38,762	28	\$342,401	13	\$74,412	9	\$68,470
Pharmacy - PD	-	-	-	-	-	-	-	-
Physical Therapy	-	-	-	-	-	-	-	-
Veterinary Medicine	-	-	-	-	-	-	-	-

## Aid by University of Florida College (continued)

College/School	Senior (5th Year)		Post-Baccalaureate		Master's Candidate		Specialist	
	Recipients	Amount	Recipients	Amount	Recipients	Amount	Recipients	Amount
Accounting	-	-	-	-	113	\$944,168	79	\$818,659
Agriculture	-	-	13	\$39,957	530	\$9,342,513	472	\$12,493,121
Architecture	-	-	-	-	86	\$1,882,185	150	\$3,346,644
Business Administration	-	-	-	-	840	\$14,746,143	303	\$7,460,035
Building Construction	-	-	-	-	39	\$458,846	21	\$240,301
Dentistry	-	-	-	-	-	-	-	-
Education	-	-	1	\$26,442	467	\$7,110,641	372	\$9,133,255
Engineering	2,375	\$18,855,944	7	\$61,370	1,679	\$13,063,955	484	\$13,952,476
Fine Arts	-	-	1	\$1,200	228	\$4,468,138	106	\$2,837,141
Health & Human Performance	-	-	6	\$23,823	206	\$4,010,746	69	\$1,679,822
Health Related Professions	-	-	19	\$104,446	194	\$4,207,607	303	\$6,828,455
Journalism & Communications	-	-	2	\$20,433	122	\$1,981,978	64	\$1,950,288
Law	-	-	-	-	84	\$2,412,409	6	\$131,828
Liberal Arts & Sciences	-	-	43	\$711,792	463	\$9,758,048	594	\$18,963,350
Medicine	-	-	-	-	-	-	-	-
Medicine-Physician Assist.	-	-	-	-	-	-	-	-
Natural Resources & Envir.	-	-	-	-	-	-	-	-
Nursing	-	-	163	\$1,916,770	5	\$94,337	31	\$581,109
Pharmacy	-	-	1	\$4,500	179	\$2,534,959	99	\$2,484,348
Pharmacy - PD	-	-	-	-	-	-	-	-
Physical Therapy	-	-	-	-	-	-	-	-
Veterinary Medicine	-	-	-	-	-	-	-	-

## Aid by University of Florida College (continued)

College/School	Doctoral Candidate		First Year Professional		Second Year Professional		Third Year Professional	
	Recipients	Amount	Recipients	Amount	Recipients	Amount	Recipients	Amount
Accounting	-	-	-	-	-	-	-	-
Agriculture	305	\$7,755,420	-	-	-	-	-	-
Architecture	39	\$990,240	-	-	-	-	-	-
Business Administration	34	\$1,000,534	-	-	-	-	-	-
Building Construction	-	-	-	-	-	-	-	-
Dentistry	-	-	81	\$5,259,388	80	\$5,203,289	81	\$5,153,527
Education	164	\$3,465,080	-	-	-	-	-	-
Engineering	476	\$12,970,899	-	-	-	-	-	-
Fine Arts	17	\$401,034	-	-	-	-	-	-
Health & Human Performance	32	\$849,938	-	-	-	-	-	-
Health Related Professions	110	\$2,965,171	-	-	-	-	-	-
Journalism & Communications	18	\$450,598	-	-	-	-	-	-
Law	-	-	114	\$3,545,326	365	\$12,664,609	398	\$13,713,417
Liberal Arts & Sciences	677	\$19,246,017	-	-	-	-	-	-
Medicine	-	-	134	\$5,891,785	126	\$5,920,175	136	\$6,306,170
Medicine-Physician Assist.	-	-	45	\$387,270	100	\$4,627,154	-	-
Natural Resources & Envir.	-	-	-	-	-	-	-	-
Nursing	10	\$240,559	-	-	-	-	-	-
Pharmacy	40	\$1,004,056	-	-	-	-	-	-
Pharmacy - PD	-	-	334	\$10,307,509	201	\$6,696,733	245	\$8,779,216
Physical Therapy	-	-	58	\$1,722,857	60	\$1,859,393	55	\$1,540,209
Veterinary Medicine	-	-	97	\$3,895,468	96	\$4,127,707	86	\$3,411,887

## Aid by University of Florida College (continued)

College/School	Fourth Year Professional		Fifth Year Professional		Sixth Year Professional		Seventh Year Professional	
	Recipients	Amount	Recipients	Amount	Recipients	Amount	Recipients	Amount
Accounting	-	-	-	-	-	-	-	-
Agriculture	-	-	-	-	-	-	-	-
Architecture	-	-	-	-	-	-	-	-
Business Administration	-	-	-	-	-	-	-	-
Building Construction	-	-	-	-	-	-	-	-
Dentistry	80	\$5,103,174	-	-	35	\$2,303,308	18	\$877,233
Education	-	-	-	-	-	-	-	-
Engineering	-	-	-	-	-	-	-	-
Fine Arts	-	-	-	-	-	-	-	-
Health & Human Performance	-	-	-	-	-	-	-	-
Health Related Professions	-	-	-	-	-	-	-	-
Journalism & Communications	-	-	-	-	-	-	-	-
Law	-	-	-	-	-	-	-	-
Liberal Arts & Sciences	-	-	-	-	-	-	-	-
Medicine	125	\$5,343,126	-	-	-	-	56	\$1,445,752
Medicine-Physician Assist.	-	-	-	-	-	-	-	-
Natural Resources & Envir.	-	-	-	-	-	-	-	-
Nursing	-	-	-	-	-	-	-	-
Pharmacy	-	-	-	-	-	-	-	-
Pharmacy - PD	262	\$8,432,397	-	-	-	-	-	-
Physical Therapy	-	-	-	-	-	-	-	-
Veterinary Medicine	93	\$3,465,259	-	-	-	-	62	\$966,328

## Aid by University of Florida College (continued)

College/School	Eighth Year Professional		Ninth Year Professional		Total*	
	Recipients	Amount	Recipients	Amount	Recipients	Amount
Accounting	-	-	-	-	594	\$4,599,070
Agriculture	-	-	-	-	4,937	\$63,080,850
Architecture	-	-	-	-	837	\$11,693,075
Business Administration	-	-	-	-	4,927	\$51,851,074
Building Construction	-	-	-	-	352	\$2,909,255
Dentistry	18	\$594,908	-	-	393	\$24,494,827
Education	-	-	-	-	1,223	\$21,630,574
Engineering	-	-	-	-	8,978	\$93,864,543
Fine Arts	-	-	-	-	1,276	\$16,703,905
Health & Human Performance	-	-	-	-	2,379	\$27,534,660
Health Related Professions	-	-	-	-	1,710	\$23,258,088
Journalism & Communications	-	-	-	-	2,460	\$26,291,553
Law	-	-	-	-	967	\$32,467,589
Liberal Arts & Sciences	-	-	-	-	12,414	\$154,585,928
Medicine	91	\$3,184,395	131	\$4,683,557	799	\$32,774,960
Medicine-Physician Assist.	-	-	-	-	145	\$5,014,424
Natural Resources & Envir.	-	-	-	-	103	\$909,039
Nursing	-	-	-	-	848	\$8,148,400
Pharmacy	-	-	-	-	374	\$6,551,908
Pharmacy - PD	-	-	-	-	1,042	\$34,215,855
Physical Therapy	-	-	-	-	173	\$5,122,459
Veterinary Medicine	31	\$800,091	21	\$759,372	486	\$17,426,112

\* Total "Recipients" is an unduplicated count.

Source: Financial Aid Database



## Financial Aid by Florida County

County	2016-17		2015-16		2014-15		2013-14	
	Recipients	Amount	Recipients	Amount	Recipients	Amount	Recipients	Amount
Alachua	2,907	\$34,835,754	2,968	\$35,859,979	2,999	\$36,669,281	3,053	\$36,969,998
Baker	41	\$388,343	44	\$369,564	40	\$320,398	29	\$237,686
Bay	252	\$2,390,956	243	\$2,414,228	259	\$2,875,782	253	\$3,128,136
Bradford	32	\$285,993	45	\$367,282	43	\$458,515	37	\$324,292
Brevard	1,255	\$14,290,243	1,272	\$14,277,530	1,267	\$14,159,992	1,262	\$13,820,336
Broward	4,449	\$50,762,600	4,466	\$49,770,907	4,591	\$50,831,980	4,660	\$50,610,456
Calhoun	8	\$98,078	11	\$110,965	9	\$119,762	13	\$155,790
Charlotte	133	\$1,818,518	126	\$1,427,888	139	\$1,599,409	147	\$1,855,662
Citrus	197	\$2,350,120	189	\$2,200,728	189	\$2,112,862	199	\$2,469,364
Clay	593	\$6,349,346	608	\$6,801,750	601	\$6,415,258	590	\$6,228,178
Collier	577	\$6,668,354	531	\$6,079,207	533	\$6,181,628	550	\$5,856,268
Columbia	148	\$1,921,412	128	\$1,683,869	132	\$1,442,236	137	\$1,482,564
Desoto	22	\$334,437	22	\$270,484	25	\$297,912	25	\$264,558
Dixie	14	\$182,917	14	\$190,931	12	\$153,874	13	\$148,727
Duval	1,893	\$25,042,054	1,918	\$25,200,811	1,825	\$23,978,807	1,853	\$23,837,034
Escambia	403	\$4,973,668	393	\$4,661,020	383	\$4,349,151	386	\$4,510,590
Flagler	138	\$2,172,294	142	\$2,168,586	148	\$2,239,266	158	\$2,216,519
Franklin	10	\$175,987	8	\$99,391	4	\$52,761	3	\$27,116
Gadsden	18	\$226,780	22	\$129,969	19	\$162,852	24	\$253,652
Gilchrist	57	\$769,338	64	\$741,978	67	\$863,691	74	\$803,743
Glades	6	\$59,718	8	\$94,235	9	\$108,475	8	\$50,699
Gulf	9	\$151,764	11	\$187,730	13	\$206,520	15	\$200,991
Hamilton	15	\$161,202	17	\$167,837	16	\$145,782	14	\$104,257
Hardee	13	\$124,088	12	\$136,140	7	\$127,204	8	\$146,620
Hendry	40	\$502,060	33	\$484,376	38	\$488,336	39	\$381,822
Hernando	196	\$2,311,933	205	\$2,524,135	208	\$2,886,698	204	\$2,874,908

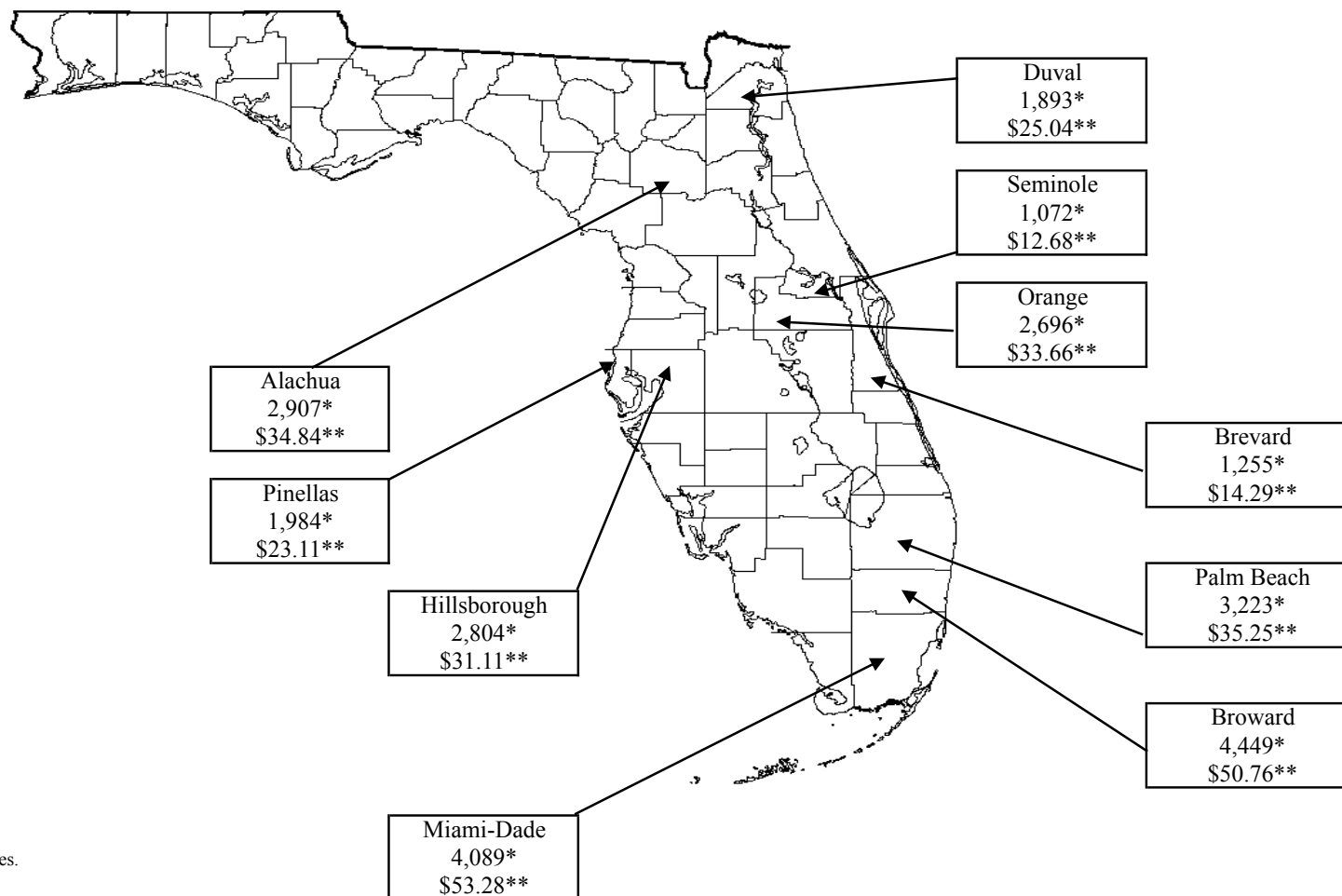
## Financial Aid by Florida County (continued)

County	2016-17		2015-16		2014-15		2013-14	
	Recipients	Amount	Recipients	Amount	Recipients	Amount	Recipients	Amount
Highlands	114	\$1,620,687	126	\$1,557,420	114	\$1,530,248	107	\$1,361,165
Hillsborough	2,804	\$31,113,867	2,778	\$29,695,944	2,645	\$28,093,059	2,572	\$27,615,151
Holmes	10	\$108,198	13	\$130,906	9	\$72,518	9	\$63,388
Indian River	268	\$2,598,643	263	\$2,731,858	258	\$2,817,204	254	\$2,479,297
Jackson	31	\$422,437	34	\$518,335	35	\$500,668	33	\$391,207
Jefferson	7	\$66,779	9	\$48,624	8	\$41,350	10	\$66,976
Lafayette	11	\$104,817	10	\$67,889	9	\$87,683	8	\$61,640
Lake	455	\$5,792,108	453	\$5,901,898	411	\$5,165,869	413	\$4,732,804
Lee	928	\$11,659,475	896	\$10,923,519	844	\$10,124,892	842	\$10,234,332
Leon	511	\$6,668,050	515	\$6,287,987	518	\$6,435,194	525	\$7,149,584
Levy	71	\$773,065	62	\$513,011	63	\$715,750	63	\$744,043
Liberty	0	\$0	0	\$0	0	\$0	1	\$11,751
Madison	19	\$213,758	17	\$179,781	16	\$167,169	16	\$182,575
Manatee	481	\$5,076,222	442	\$4,631,067	416	\$4,789,187	417	\$5,039,099
Marion	774	\$9,701,024	802	\$9,767,815	780	\$9,902,501	778	\$10,322,663
Martin	452	\$4,584,844	466	\$4,981,129	467	\$4,849,013	464	\$4,539,236
Miami-Dade	4,089	\$53,282,626	4,034	\$52,135,126	3,942	\$51,275,767	3,770	\$48,642,586
Monroe	135	\$1,288,108	141	\$1,469,456	140	\$1,566,019	152	\$1,621,364
Nassau	160	\$1,682,256	142	\$1,654,314	144	\$1,661,417	140	\$1,676,650
Okaloosa	325	\$3,369,588	331	\$3,350,786	330	\$3,320,431	371	\$3,519,597
Okeechobee	51	\$586,376	44	\$563,306	43	\$475,915	51	\$538,591
Orange	2,696	\$33,660,209	2,591	\$31,570,870	2,563	\$31,456,973	2,476	\$30,445,386
Osceola	424	\$6,583,883	412	\$5,983,570	417	\$6,343,537	400	\$5,253,087
Palm Beach	3,223	\$35,250,538	3,188	\$33,065,285	3,087	\$33,041,404	3,177	\$33,387,191
Pasco	678	\$8,711,621	683	\$8,642,399	675	\$8,806,208	683	\$8,958,839
Pinellas	1,984	\$23,110,772	1,975	\$22,454,236	2,076	\$23,460,993	2,141	\$24,601,473

## Financial Aid by Florida County (continued)

County	2016-17		2015-16		2014-15		2013-14	
	Recipients	Amount	Recipients	Amount	Recipients	Amount	Recipients	Amount
Polk	696	\$8,862,566	685	\$8,490,869	682	\$8,807,404	692	\$8,529,895
Putnam	69	\$978,252	58	\$903,507	64	\$1,010,637	74	\$991,618
Santa Rosa	173	\$2,060,629	185	\$1,868,834	167	\$1,750,079	171	\$1,906,749
Sarasota	708	\$8,273,214	687	\$7,999,186	681	\$8,077,402	694	\$8,655,842
Seminole	1,072	\$12,679,626	1,064	\$13,188,210	1,061	\$12,781,702	1,046	\$11,756,247
St. Johns	779	\$8,177,333	719	\$7,334,923	665	\$6,684,754	605	\$5,741,056
St. Lucie	381	\$5,318,188	405	\$5,464,149	382	\$5,249,015	365	\$4,964,513
Sumter	63	\$895,641	59	\$845,184	62	\$853,009	62	\$881,417
Suwannee	87	\$936,609	86	\$1,009,593	72	\$918,714	67	\$708,797
Taylor	28	\$375,507	27	\$356,788	26	\$419,888	24	\$275,076
Union	23	\$273,191	25	\$276,529	27	\$403,582	21	\$276,555
Volusia	660	\$8,495,780	676	\$9,148,451	715	\$9,184,061	757	\$10,147,726
Wakulla	23	\$261,200	21	\$272,004	21	\$245,263	15	\$231,339
Walton	31	\$347,722	38	\$347,398	42	\$386,694	32	\$299,557
Washington	15	\$237,568	19	\$344,335	22	\$374,087	19	\$344,567
Non-Florida	5,673	\$143,435,270	5,269	\$133,835,160	4,870	\$124,111,371	4,582	\$118,115,358
Non-USA	4,085	\$71,052,012	3,872	\$68,145,865	3,515	\$63,837,982	3,508	\$63,574,448

## Financial Aid by Florida County (continued)



\*Number of recipients

\*\*Dollars (in millions)

Represented are the top ten counties.





**Student Financial Affairs**

**2016-17**

# **FACT BOOK**

## attendance costs

## Matriculation and Tuition Fees Per Credit Hour

Academic Year	Undergraduate	Graduate	Law
<b>2016-17</b>			
In-State	\$212.71	\$530.69	\$743.31
Out-of-State*	\$955.28	\$1,255.41	\$1,296.80
<b>2015-16</b>			
In-State	\$212.71	\$530.69	\$743.31
Out-of-State*	\$955.28	\$1,255.41	\$1,296.80
<b>2014-15</b>			
In-State	\$210.43	\$528.41	\$741.03
Out-of-State*	\$953.00	\$1,253.13	\$1,294.52
<b>2013-14</b>			
In-State	\$208.77	\$526.75	\$739.37
Out-of-State*	\$951.34	\$1,251.47	\$1,384.86
<b>2012-13</b>			
In-State	\$204.76	\$524.56	\$714.04
Out-of-State*	\$947.33	\$1,249.28	\$1,359.53
<b>2011-12</b>			
In-State	\$188.55	\$498.09	\$623.66
Out-of-State*	\$931.12	\$1,222.81	\$1,269.15
<b>2010-11</b>			
In-State	\$168.15	\$454.83	\$546.22
Out-of-State*	\$910.72	\$1,179.55	\$1,191.71
<b>2009-10</b>			
In-State	\$145.76	\$394.85	\$474.25
Out-of-State*	\$791.47	\$1,119.57	\$1,119.74
<b>2008-09</b>			
In-State	\$125.91	\$341.29	\$411.30
Out-of-State*	\$687.40	\$971.48	\$1,056.79
<b>2007-08</b>			
In-State	\$112.41	\$311.60	\$360.28
Out-of-State*	\$622.86	\$941.79	\$1,005.77

\* Out-of-state fee is a total of in-state fees plus an out-of-state supplement.

Source: Deans, Directors, and Department Heads Memorandum issued each August from the university comptroller.

## Undergraduate Student Cost of Attendance\* Comparison

Single Undergraduate Student Costs	2016-17	2015-16	2014-15	2013-14	2012-13	2011-12	2010-11	2009-10	2008-09	2007-08
Fees	\$6,380	\$6,310	\$6,310	\$6,270	\$6,170	\$5,700	\$5,020	\$4,340	\$3,790	\$3,370
Books	\$1,210	\$1,300	\$1,290	\$1,080	\$1,080	\$1,070	\$1,000	\$990	\$960	\$940
Food	\$4,470	\$4,230	\$4,290	\$4,290	\$4,130	\$3,550	\$3,340	\$2,640	\$2,520	\$2,490
Room	\$5,420	\$5,420	\$5,340	\$5,230	\$5,240	\$5,250	\$5,300	\$4,860	\$4,630	\$4,530
Transportation	\$1,090	\$1,100	\$1,100	\$1,110	\$540	\$530	\$530	\$540	\$480	\$520
Clothing Maintenance	\$1,140	\$700	\$690	\$690	\$680	\$650	\$630	\$650	\$620	\$610
Personal	\$260	\$270	\$270	\$270	\$1,460	\$1,840	\$1,650	\$1,630	\$1,640	\$1,640
Computer Allowance	\$1,260	\$1,260	\$1,260	\$1,280	\$1,280	\$1,240	\$910	\$1,040	\$1,100	\$970
<b>Total</b>	<b>\$21,230</b>	<b>\$20,590</b>	<b>\$20,550</b>	<b>\$20,220</b>	<b>\$20,580</b>	<b>\$19,830</b>	<b>\$18,380</b>	<b>\$16,690</b>	<b>\$15,740</b>	<b>\$15,070</b>

\* On-campus, Florida resident, undergraduate budget is used. Costs represent two semesters at 15 credit hours/term enrollment.

Source: Student Financial Affairs Accounting



## Total Student Cost of Attendance Comparison

	2016-17	2015-16	2014-15	2013-14	2012-13	2011-12	2010-11	2009-10
<b>Undergraduate</b>								
On-Campus/FL Resident	\$21,230	\$20,590	\$20,550	\$20,220	\$20,580	\$19,830	\$18,380	\$16,690
Off-Campus/FL Resident	\$21,230	\$20,590	\$20,550	\$20,220	\$20,580	\$19,830	\$18,380	\$17,360
With Parents	\$12,330	\$11,900	\$11,930	\$11,790	\$12,270	\$12,510	\$11,470	\$10,720
On-Campus/Out-of-State	\$43,508	\$42,868	\$42,828	\$42,498	\$42,858	\$42,066	\$40,670	\$36,060
<b>Graduate</b>								
On-Campus/FL Resident	\$29,670	\$28,770	\$27,860	\$27,450	\$27,730	\$26,580	\$24,620	\$22,350
Off-Campus/FL Resident	\$29,890	\$29,310	\$28,290	\$28,050	\$27,730	\$27,620	\$25,750	\$22,490
With Parents	\$18,790	\$18,370	\$18,400	\$18,260	\$18,790	\$18,860	\$17,370	\$15,850
On-Campus/Out-of-State	\$47,064	\$46,704	\$45,254	\$44,844	\$45,124	\$43,974	\$42,190	\$39,740
<b>Professional (off-campus)</b>								
Law/FL Resident	\$40,090	\$39,410	\$38,400	\$37,640	\$37,260	\$34,400	\$31,310	\$27,330
Law/Out-of-State	\$56,690	\$56,010	\$55,000	\$57,000	\$56,620	\$53,820	\$50,530	\$46,690
Dental/FL Resident	\$65,540	\$65,150	\$63,788	\$64,756	\$62,160	\$57,250	\$51,382	\$45,188
Dental/Out-of-State	\$92,020	\$91,630	\$90,270	\$91,238	\$88,642	\$83,732	\$77,864	\$71,668
PA/FL Resident	\$37,525	\$37,005	\$35,920	\$37,476	\$33,893	\$31,511	\$29,070	\$24,800
PA/Out-of-State	\$61,690	\$61,170	\$60,089	\$61,645	\$58,062	\$55,680	\$53,239	\$45,817
VM/FL Resident	\$46,535	\$46,475	\$45,474	\$47,076	\$45,518	\$44,488	\$40,892	\$34,434
VM/Out-of-State	\$63,245	\$63,185	\$66,450	\$68,050	\$66,494	\$63,052	\$61,866	\$58,678
MD/FL Resident	\$56,005	\$55,610	\$55,000	\$56,656	\$53,296	\$50,952	\$46,983	\$43,481
MD/Out-of-State	\$68,265	\$67,870	\$67,290	\$68,912	\$64,726	\$80,192	\$76,223	\$72,721

Source: Student Financial Affairs Accounting



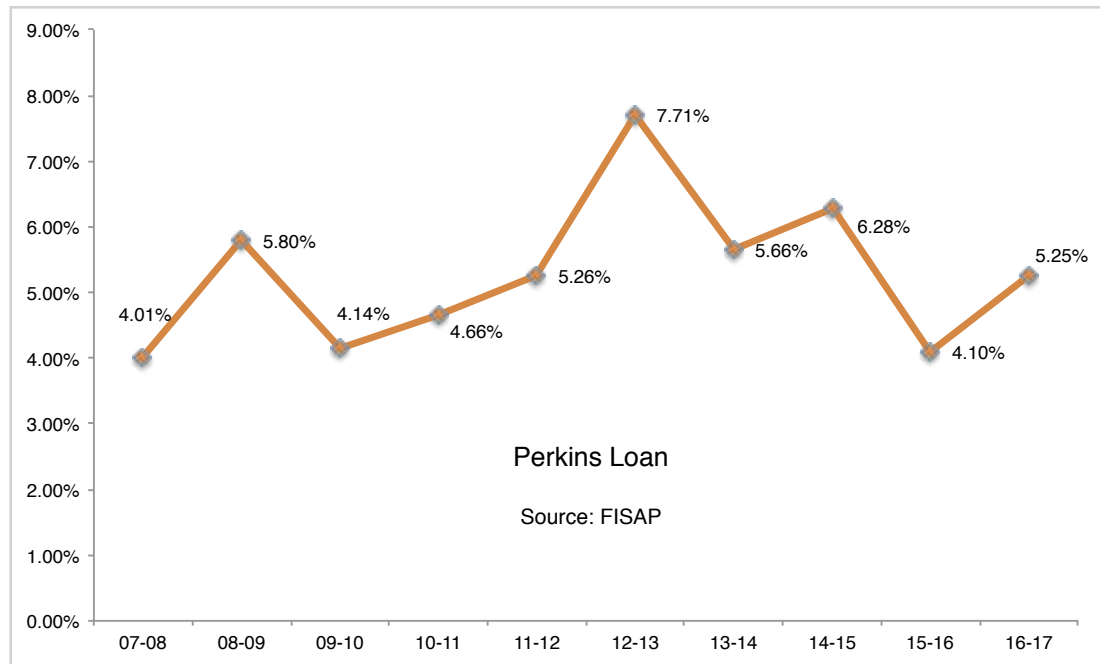
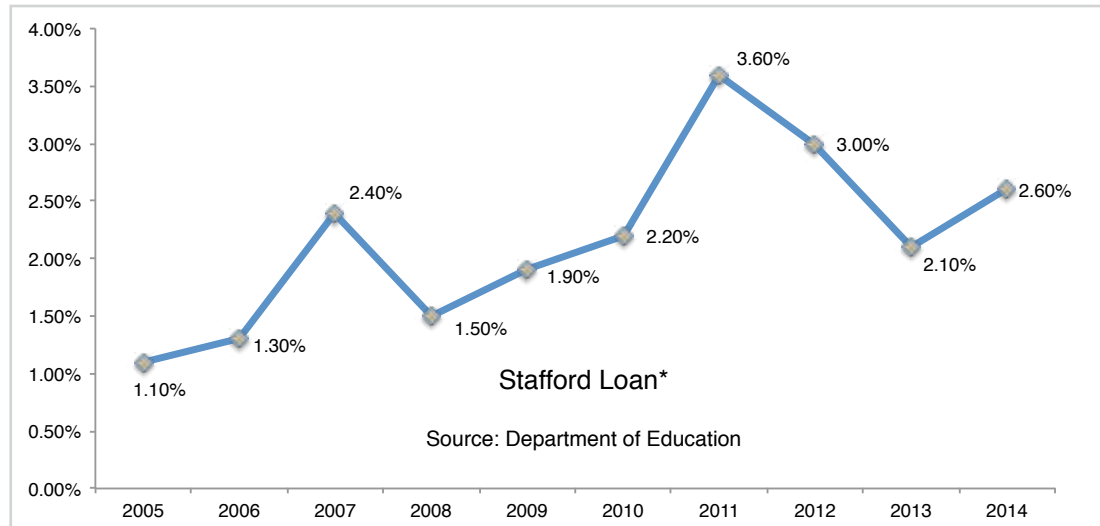
**Student Financial Affairs**

**2016-17**

# **FACT BOOK**

## student loans

## University of Florida Loan Cohort Default Rates



\* For Fiscal Year 2011, the Department of Education began using a 3-year cohort default rate.

## Average Loan Indebtedness by Loan Program

Description	Stafford	Perkins	Other Loans*	All Loans**	PLUS	Grad PLUS
<b>Undergraduate</b>						
Students who graduated in 2016-17	\$19,790	\$7,261	\$17,972	\$22,188	\$26,388	\$15,122
<b>Graduate</b>						
Students who graduated in 2016-17	\$36,804	\$6,761	\$13,994	\$42,993	\$18,819	\$20,420
<b>Professional</b>						
Students who graduated in 2016-17	\$98,686	\$6,169	\$29,861	\$115,654	\$18,817	\$30,940

## Average Loan Indebtedness by Loan Recipients 2007-08 through 2016-17

Description	2016-17	2015-16	2014-15	2013-14	2012-13	2011-12	2010-11	2009-10	2008-09	2007-08
<b>Undergraduate</b>										
Students who attended and graduated	\$22,188	\$21,603	\$21,028	\$20,642	\$20,708	\$19,636	\$17,504	\$16,600	\$16,114	\$15,318
<b>Graduate</b>										
Students who attended and graduated	\$42,993	\$42,320	\$44,182	\$41,719	\$38,484	\$35,608	\$33,770	\$32,920	\$32,964	\$31,334
<b>Professional</b>										
Students who attended and graduated	\$115,654	\$125,647	\$117,817	\$115,945	\$95,475	\$96,315	\$90,062	\$83,079	\$78,590	\$75,049

\* "Other Loans" includes loans awarded by departments within the university and student loans received from private corporations.

\*\* "All Loans" does not include PLUS, which is a debt incurred by the parent during the student's undergraduate years. PLUS loans are not included in the average.

Source: Financial Aid Database

Note: Averages are based on students who attended UF during 2016-17 and who borrowed the specified loan at least once during their college career.





**Student Financial Affairs**

**2016-17**

# **FACT BOOK**

general

## Financial Aid Applications and Awards

Year	Total Aid Applicants	Need Analysis on File and Received any Type of Aid	Need Analysis on File and Need > 0	Need Analysis on File and Need ≤ 0
2016-17	77,376	41,324	27,929	13,835
2015-16	76,895	42,122	27,858	14,681
2014-15	77,900	41,098	28,318	13,255
2013-14	81,932	45,050	29,654	15,799
2012-13	83,326	46,592	30,324	16,602
2011-12	74,002	45,979	32,568	13,735
2010-11	59,304	35,038	28,818	6,444
2009-10	54,152	33,402	26,667	6,894
2008-09	48,609	31,923	25,152	6,952
2007-08	44,302	30,463	24,095	6,508

\* The combination of these two columns does not add up to need analysis documents received. Documents that are unaccounted for are for those students who did not go far enough into the aid process to have a determination of financial need made.

Source: Financial Aid Database

## Student Walk-In Traffic, Fall

### Week Prior to Classes

Year	Day 1	Day 2	Day 3	Day 4	Day 5	Total
2016-2017	168	191	244	267	357	1,227
2015-2016	220	247	269	305	380	1,421
2014-2015	207	253	281	358	474	1,573
2013-2014	127	123	152	150	226	778
2012-2013	130	81	86	142	178	617
2011-2012	87	194	183	233	337	1,034
2010-2011	194	183	233	337	460	1,407

### First Week of Classes

2016-2017	514	434	436	320	372	2,076
2015-2016	651	531	435	376	420	2,413
2014-2015	731	561	486	456	446	2,680
2013-2014	543	501	571	460	451	2,526
2012-2013	504	427	455	535	421	2,342
2011-2012	460	695	565	431	399	2,550
2010-2011	695	565	431	399	401	2,491

### Second Week of Classes

2016-2017	448	420	476	364	-	1,708
2015-2016	467	485	472	532	399	2,355
2014-2015	-	602	586	572	434	2,194
2013-2014	623	570	443	501	503	2,640
2012-2013	555	582	649	608	591	2,985
2011-2012	401	473	393	366	423	2,056
2010-2011	473	393	366	423	372	2,027



## Student Walk-In Traffic, Spring

### First Week of Classes

Year	Day 1	Day 2	Day 3	Day 4	Day 5	Total
2016-2017	-	293	422	379	388	1,482
2015-2016	332	479	410	358	327	1,906
2014-2015	445	549	404	321	351	2,070
2013-2014	566	391	378	285	330	1,950
2012-2013	196	584	433	380	226	1,819
2011-2012	224	516	396	316	310	1,762
2010-2011	283	440	354	321	254	1,652

### Second Week of Classes

2016-2017	416	370	363	352	346	1,847
2015-2016	388	236	251	280	251	1,406
2014-2015	381	330	296	282	286	1,575
2013-2014	360	258	295	270	241	1,424
2012-2013	391	379	331	335	274	1,710
2011-2012	282	332	259	322	270	1,465
2010-2011	302	320	299	240	228	1,389

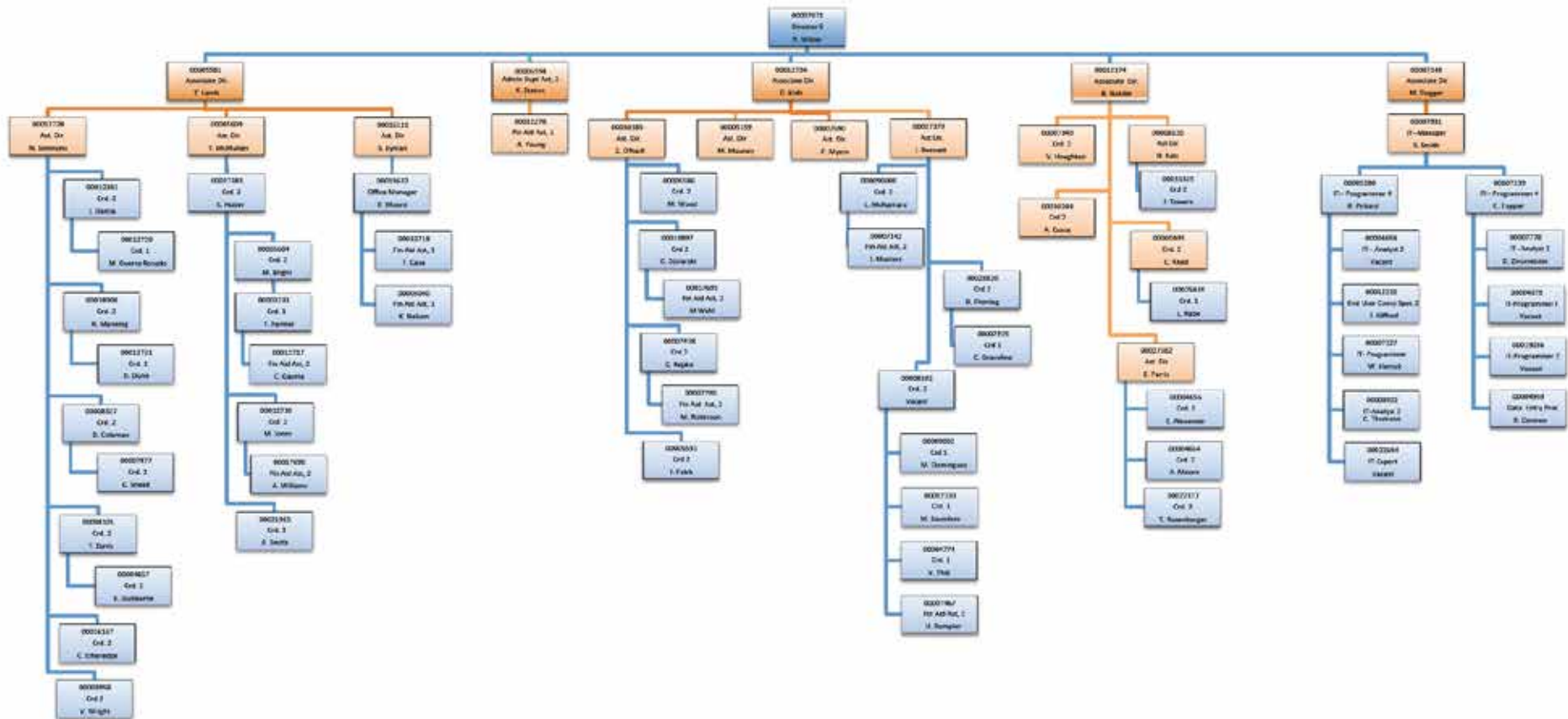


**Student Financial Affairs**

**2016-17**

# **FACT BOOK** organization

## Student Financial Affairs Organizational Chart



**University of Florida**  
Division of Enrollment Management  
Office for Student Financial Affairs  
2016

## Student Financial Affairs: Staff by Classification

Year	Full-Time	OPS	FWSP
2016-17	65	1	59
2015-16	68	0	62
2014-15	66	1	51
2013-14	67	1	56
2012-13	65	1	53
2011-12	62	1	50
2010-11	69	1	55
2009-10	68	5	52
2008-09	66	5	53
2007-08	73	13	65

Source: Student Financial Affairs Payroll Ledgers





**Student Financial Affairs**

**2016-17**

# **FACT BOOK**

## appendix

## Glossary of Financial Aid Terms

- **Academic Year**—A year, that contains fall, spring, and summer terms. For example, the academic year for 2010-11 is fall 2010, spring 2011, and summer 2011.
- **Custodial Funds**—Funds awarded by private donors and University of Florida offices other than Student Financial Affairs.
- **Dependent Student**—Defined federally as a single undergraduate student without dependents who has not reached the age of 23 and who is not a veteran, orphan, or ward of the court.
- **Duplicated Count**—A student may be counted more than once in the final total, depending on the number of aid awards the student receives.
- **Grants**—Gift aid awarded to undergraduates who show financial need. These funds do not have to be repaid.
- **Independent Student**—Defined federally as a student who is a graduate student, over the age of 23, married, a veteran of the US Armed Forces, an orphan or ward of the court, or a student who has dependent children.
- **Loans**—Financial aid awarded to students that is based on financial need and requires that students repay the money.
- **N/A**—Not available.
- **Need-Based Aid**—Aid awarded that takes the student's financial situation into consideration.
- **Non-Need-Based Aid**—The student's financial need is not considered in the determination of the award.
- **Package**—A combination of aid programs used to meet the student's financial need.
- **Scholarships**—Gift aid based on academic achievement. Scholarships may or may not also be based on financial need.
- **State Programs**—Financial aid awarded by the Florida Department of Education to Florida residents. These include such programs as the Florida Student Assistance Grant, Florida Bright Futures Scholarships, Robert C. Byrd Scholarship, and Florida Teachers' Scholarship.
- **Student Employment**—A section of Student Financial Affairs which is the clearing house for part-time employment and coordinates three employment programs: the Federal Work-Study Program (FWSP), Other Personnel Services (OPS), Florida Work Experience Program (FWEPP), and off-campus jobs.
- **Total Awards**—The total number of awards given to students. This is not equal to a head count of students, since a student may receive more than one award.
- **Unduplicated Count**—Each student is counted only once in the total, regardless of how many awards the student receives.



**Office for Student Financial Affairs**

S-107 Criser Hall • P. O. Box 114025 • Gainesville, FL 32611-4025

*Division of Enrollment Management*

The University of Florida is committed to nondiscrimination with respect to race, creed, religion, age, disability, color, sex, sexual orientation, marital status, national origin, political opinions or affiliations, or veteran status.