



Student Financial Affairs

# FACT BOOK

2014 - 2015

**UF** | UNIVERSITY of  
FLORIDA



Student Financial Affairs

2014-15

# FACT BOOK

## introduction

## The Office for Student Financial Affairs

The Office for Student Financial Affairs (SFA) is a service-oriented department within the Division of Enrollment Management. The office is located on the ground floor of the Marshall M. Criser Student Services Center. SFA administers federal, state, private, and institutional funds. On average, 82 percent of students received some form of financial assistance during the 2014-15 academic year at the University of Florida. The *Student Financial Affairs Fact Book* is statistical in form and is designed to show the impact of financial aid in helping students achieve their desired educational goals at the University of Florida. Information reported will show trends in financial aid over the past three to ten years.

*Fact Book 2014-15*  
*Office for Student Financial Affairs*

Rick Wilder  
*Director*

The *Fact Book 2014-15* was compiled by:  
Christina Lamb  
*Senior Associate Director*

Nadav Katz  
*Accounting Coordinator*

The *Fact Book 2014-15* was designed by:  
Sharon Eyman  
*Assistant Director*

Date of Publication:  
10/28/2015

University of Florida  
*Office for Student Financial Affairs*  
S-107 Criser Hall  
P. O. Box 114025  
Gainesville, Florida 326114025  
(352) 392-1275  
[www.sfa.ufl.edu](http://www.sfa.ufl.edu)

This report is available in alternative formats for individuals with documented, print-related disabilities.  
Hearing-impaired individuals may call our telephone line for students with disabilities: Florida Relay Service 711 (V/TDD).  
Our website at [www.sfa.ufl.edu](http://www.sfa.ufl.edu) is screen-reader friendly.



# Table of Contents

## Introduction

Table of Contents.....	iii
Facts at A Glance .....	iv
Bright Futures Summary .....	v
Machen Florida Opportunity Scholarship.....	vi
Student Financial Affairs Aid Summary .....	vii
Student Financial Affairs by the Numbers.....	viii

## Fiscal Summary

Summary of Student Aid.....	2
Summary of Student Aid Awards (longitudinal) .....	4
Summary of Student Aid Disbursed (longitudinal) .....	6
Financial Aid by Type.....	8
Financial Aid by Source.....	9
Total Need and Non-Need-Based Aid.....	12

## Demographics

Parental Median Income of Freshman Students.....	14
Average Income by Race .....	15
Financial Aid by Race .....	16
Financial Aid Recipients by Race (longitudinal).....	17
Average Financial Aid Award by Race (longitudinal) .....	18
Financial Aid by Gender .....	19
Financial Aid Recipients by Gender (longitudinal).....	20
Average Financial Aid Award by Gender (longitudinal).....	21
Aid by Classification (year in college) .....	22
Aid by University of Florida College .....	25
Aid by Florida County.....	30

## Attendance Costs

Matriculation and Tuition Fees per Credit Hour.....	36
Undergraduate Student Cost of Attendance Comparison.....	37
Total Student Cost of Attendance Comparison.....	38

## Student Loans

University of Florida Loan Default Rates .....	40
Average Loan Indebtedness by Loan Program and Classification .....	41

## General

Financial Aid Applications and Awards .....	44
Student Walk-In Traffic by Semester.....	45

## Organization

Organizational Chart.....	48
Student Affairs Staff by Classification .....	49

## Appendix

Glossary of Financial Aid Terms.....	52
--------------------------------------	----

## Facts at a Glance

### Summary

Total Aid Disbursed	\$561,132,785
Total Aid Recipients (unduplicated)	46,491
Percentage of Enrolled Students Who Received Aid	82%
Estimated Undergraduate Cost of Attendance	\$20,550
Average Undergraduate Loan Indebtedness (students graduating 2014-15)	\$21,028
Federal Direct Stafford Loan Fiscal Year 2012 3-Year Cohort Default Rate	3.0%

### Breakdown by Type of Funds

Scholarships (including waivers)	\$186,691,039
Grants	\$87,059,361
Loans	\$266,505,081
Employment	\$20,877,304

### Breakdown by Source of Funds

Federal	\$310,894,749
State	\$124,191,298
Institutional	\$94,715,522
Private	\$31,331,216

## Bright Futures Summary

	<b>Students</b>	<b>Amount Disbursed</b>
Academic Scholars	15,411	\$39,919,758
Medallion Scholars	9,199	\$16,985,350
Gold Seal Vocational	30	\$32,340
Top Scholars	126	\$138,908
Total Bright Futures Programs	24,766	\$57,076,356
Percent In-State Freshman Receiving Bright Futures		87%
Percent In-State Undergraduates Receiving Bright Futures		73%

## Machen Florida Opportunity Scholarship Recipient Profile

**Number of Scholars** 1214

**Total Dollars Paid** \$10,982,732

### Recipients by Race

Black	31%
Hispanic	35%
Asian	10%
Native American	1%
White	22%
Not Reported/Other	1%

Average Family Income \$18,408

Average Award \$9,047

### Recipients by Gender

Female	65%
Male	35%

### Average UF Cumulative GPA

2007 Cohort	3.66
2008 Cohort	3.15
2009 Cohort	3.02
2010 Cohort	3.17
2011 Cohort	3.29
2012 Cohort	3.23
2013 Cohort	3.14
2014 Cohort	3.20

## Student Financial Affairs Aid Summary

Total Financial Aid\*  
**\$602,558,005**

2014-15

### Grants

**\$87,059,361**

27,205 Awards

### Loans

**\$266,505,081**

35,864 Awards

### Scholarships

**\$164,131,340**

45,609 Awards

### Student Employment

**\$20,877,304**

10,455 Awards

### Custodial Funds

**\$22,559,699**

5,976 Awards

### Florida Prepaid

**\$41,425,220**

12,843 Awards

\* Total includes Florida Prepaid



### Machen Florida Opportunity Scholars

**\$10,982,732**

1,324 Awards



### Pell Grants

**\$47,317,954**

11,547 Awards



### Bright Futures

**\$57,076,356**

24,766 Awards



### I. Douglas Turner

**\$15,385,441**

6,058 Awards

### Direct Loans Disbursed

**\$250,704,596**

### Subsidized Loans

**\$36,188,991**

10,051 Awards

### Unsubsidized Loans

**\$172,353,384**

17,775 Awards

### PLUS Loans

**\$13,208,216**

1,507 Awards

### Graduate PLUS Loans

**\$28,954,005**

3,344 Awards



## UF STUDENT FINANCIAL AFFAIRS BY THE NUMBERS



Percentage of  
Enrolled Students  
Who Received Aid

**82%**

2014-15

Total Aid Disbursed  
**\$561,132,786**

2014-15

(does not include Florida Prepaid)



2014-15 Undergraduate

Cost of  
Attendance  
**\$20,550**



**87%**

In-State Freshman  
Receiving  
Bright Futures

2014-15



**56%**

of UF undergrads  
graduate with no  
student loan debt.



## UF STUDENT FINANCIAL AFFAIRS BY THE NUMBERS

Total Aid  
Recipients

**46,491**

2014-15



**96%**

Freshman  
Retention Rate



Scholarships  
Awarded

**45,609**

2014-15



Private 6%

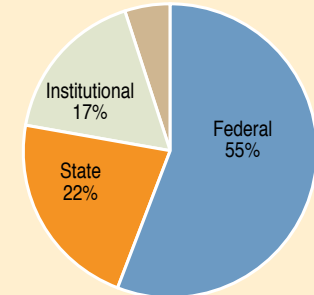
Institutional  
17%

State  
22%

Federal  
55%

Source of Funds

2014-15



Federal Direct Loan  
2012 Cohort  
Default Rate

**3.0%**

National Average is 11.8%  
3 Year Official



UF undergraduates'  
average  
indebtedness is

**\$21,028**

compared with the  
national average of  
over \$28,000.





## UF RANKINGS

**#2**

**Fiske Guide to  
Colleges  
“Best Buy List”**

2016

**#14**

**“Top Public Universities”  
in U.S. News &  
World Report Rankings**  
September 2015

Among AAU public  
universities, UF ranked  
**first**

in master’s degrees and  
second in bachelor’s  
degrees awarded to  
Hispanic students

2013

**#3**

**in Kiplinger’s  
“Best Values in  
Public Colleges”**

2015

**#2**

on SmartMoney  
magazine’s list of  
universities whose  
graduates get the highest  
salary return for their  
tuition dollars

2012

**#6**

**UF’s Rank Nationally in  
Helping Low-Income  
Students get a  
College Education.**

The New York Times, 2015

**#1**

on Washington  
Monthly magazine’s  
list of national universities  
that offer the best bang  
for the buck

2014

**#15**

on the Forbes  
list of  
“Best Public  
Universities”

2013

**9<sup>th</sup>**

Job recruiters ranked UF  
on the list of places  
where corporations  
prefer to recruit new  
employees

2010

**#7**

in Money  
Magazine’s  
“Best Colleges for  
Your Money”

2014

**#9**

on the Forbes  
list of  
“Best Values  
Colleges”

2014

**#6**

CollegeMagazine.com  
“Best Career Services”  
list of top colleges that  
will get you a job.

2014



Student Financial Affairs

2014-15

# FACT BOOK

fiscal summary

## Summary of Student Aid

	Number of Awards	Total Awards	Total Recipients*	Amount Disbursed	Total
<b>Private Donor Awards</b>	5,976			\$22,559,699	
		<b>5,976</b>	<b>4,616</b>		<b>\$22,559,699</b>
<b>Employment</b>					
Federal Work-Study Program	1,083			1,826,760	
Other Personnel Services	9,322			18,960,113	
FWEP	50			90,431	
		<b>10,455</b>	<b>9,877</b>		<b>\$20,877,304</b>
<b>Grants</b>					
Academic Competitiveness Grant	0			0	
Athletic	801			9,625,361	
Federal Pell	11,547			47,317,954	
Federal Supplemental (SEOG)	2,207			2,860,244	
Florida Student Assistance	3,923			6,555,371	
Graduate	2,331			4,494,065	
I. Douglas Turner	6,058			15,385,441	
Metta Heathcote	100			90,260	
Miscellaneous	230			709,038	
SMART	0			0	
TEACH	8			21,627	
		<b>27,205</b>	<b>15,523</b>		<b>\$87,059,361</b>
<b>Scholarships</b>					
Alliance Partner	78			237,499	
Brecht	93			138,000	
Dental/Disadvantage	43			645,000	
Florida Academic Scholars**	15,411			39,919,758	
Florida Incentive Scholarship	81			1,319,533	
Florida Medallion**	9,199			16,985,350	
Florida Top Scholars**	126			138,908	
Florida Vocational Gold Seal**	30			32,340	
General & Special	498			834,231	
Honorably Discharged Graduate Assistance	63			51,900	
In-State Matriculation Waivers	7,012			44,884,427	
Lombardi	39			174,463	
Machen Florida Opportunity Scholars	1,324			10,982,732	
Medical/Disadvantage	0			0	
Miscellaneous	7			13,000	
Miscellaneous Other State	55			268,085	
National Merit	296			246,978	
National Merit Stipend	321			323,850	
Out-of-State Matriculation Waivers	1,735			14,111,908	

\* "Total Recipients" is an unduplicated count of students receiving each aid type.

\*\* These four awards are part of the Florida Bright Futures Scholarship Program.

## Summary of Student Aid

	Number of Awards	Total Awards	Total Recipients*	Amount Disbursed	Total
<b>Scholarships</b> (continued)					
Presidential Academic	201			969,877	
Presidential Achievement	0			0	
UF College Awarded	8,675			29,779,140	
UF Gold	122			918,412	
UF Merit	51			25,250	
UF Platinum	102			985,206	
University Academic	10			26,000	
US National Service	37			119,493	
		<b>45,609</b>	<b>35,342</b>		<b>\$164,131,340</b>
<b>Loans</b>					
Arthur L. Wallace	22			71,345	
Dentistry	44			308,000	
Grad PLUS	3,344			28,954,005	
Medical	13			83,400	
Occ Phy Therapy	0			0	
Perkins	1,803			6,419,577	
PLUS	1,507			13,208,216	
Private	718			7,596,699	
Short-Term	382			538,190	
Student Aid for Education	37			88,356	
Subsidized Stafford	10,051			36,188,991	
UF College Awarded	152			620,570	
UF Long-Term	5			7,500	
Unsubsidized Stafford	17,775			172,353,384	
Veterinary Medicine	11			66,848	
		<b>35,864</b>	<b>18,132</b>		<b>\$266,505,081</b>
<b>Total</b>		<b>125,109</b>	<b>46,491</b>		<b>\$561,132,785</b>
<b>Other Programs</b>					
	Number of Awards		Number of Recipients*		Total
Florida Prepaid	12,843		12,842		\$41,425,220

\* "Total Recipients" is an unduplicated count of students receiving each aid type. The total is an unduplicated count of all students on aid.



## Summary of Student Aid Awards, Academic Year 2005-06 through Academic Year 2014-15

	2014-15	2013-14	2012-13	2011-12	2010-11	2009-10	2008-09	2007-08	2006-07	2005-06
<b>Private Donor Awards</b>	<b>5,976</b>	<b>5,872</b>	<b>5,673</b>	<b>6,045</b>	<b>6,053</b>	<b>6,184</b>	<b>7,297</b>	<b>6,485</b>	<b>6,246</b>	<b>5,954</b>
<b>Employment</b>										
Federal Work Study Program	1,083	659	854	1,010	986	1,519	1,187	1,210	1,356	1,544
Other Personnel Services	9,322	8,933	8,973	6,458	6,179	5,914	5,525	5,330	5,318	5,234
FWEF	50	95	49	128	0	0	0	0	0	0
<b>Total Employment</b>	<b>10,455</b>	<b>9,687</b>	<b>9,876</b>	<b>7,596</b>	<b>7,165</b>	<b>7,433</b>	<b>6,712</b>	<b>6,540</b>	<b>6,674</b>	<b>6,778</b>
<b>Grants</b>										
Academic Competitiveness	0	0	0	0	2,965	2,414	2,039	1,587	0	0
Athletic	801	802	828	798	588	724	705	1,423	1,512	1,503
Federal Pell	11,547	11,622	11,626	11,846	11,081	9,573	7,851	7,556	7,613	8,022
Federal Supplemental	2,207	2,173	2,827	3,292	2,383	3,096	2,158	1,977	1,868	1,574
Florida Student Assistance	3,923	2,923	3,758	4,642	3,564	3,484	3,861	4,586	4,341	4,357
Graduate	2,331	2,012	2,730	1,500	1,954	2,801	1,997	1,663	1,814	743
I.D. Turner	6,058	5,412	5,925	7,247	5,222	5,606	3,343	4,060	4,659	2,581
Metta Heathcote	100	117	152	132	118	113	186	139	129	141
Miscellaneous	230	205	239	181	157	245	431	426	378	312
SMART	0	0	0	0	2,093	1,796	714	634	0	0
TEACH	8	10	11	12	16	12	7	0	0	0
<b>Total Grants</b>	<b>27,205</b>	<b>25,276</b>	<b>28,096</b>	<b>29,650</b>	<b>30,141</b>	<b>29,864</b>	<b>23,292</b>	<b>24,051</b>	<b>22,314</b>	<b>19,233</b>
<b>Scholarships</b>										
Alliance Partner	78	90	92	110	126	144	137	140	115	86
Brecht	93	80	106	108	115	116	119	80	112	162
Dental / Disadvantaged	43	39	43	17	16	9	12	21	0	26
Florida Academic Scholars	15,411	15,801	15,309	15,413	15,683	15,574	15,401	13,916	13,206	11,993
Florida Incentive Scholarship	81	0	0	0	0	0	0	0	0	0
Florida Medallion	9,199	9,731	9,837	10,305	10,559	11,138	11,716	12,325	12,399	12,378
Florida Top Scholar	126	136	135	134	151	142	139	137	129	117
Florida Vocational Gold Seal	30	53	67	64	43	31	13	18	67	45
General & Special	498	545	577	577	590	579	677	487	589	705
Honorably Discharged Graduate Assist	63	0	0	0	0	0	0	0	0	0
I/S Matriculation Waivers	7,012	7,055	7,375	7,741	8,008	8,655	8,822	8,561	8,465	8,041
Lombardi	39	38	38	39	42	9	30	31	29	24
Machen Florida Opportunity Scholars	1,324	1,337	1,315	1,370	1,409	1,358	1,046	425	0	0
Medical / Disadvantaged	0	0	0	12	14	20	19	0	0	0
Miscellaneous	7	9	11	11	10	11	9	9	9	8
Miscellaneous Other State	55	47	48	49	503	491	621	545	498	437
National Merit	296	448	639	671	672	797	855	1,091	1,104	1,127
National Merit - Stipend*	321	422	560	594	600	711	775	931	909	907
Out-of-State Matriculation Waivers*	1,735	1,763	1,855	1,754	1,562	1,492	1,515	1,209	1,102	841
Presidential Academic	201	286	346	447	522	508	547	875	901	900
President Achievement	0	19	44	56	84	101	119	0	0	0
UF College Awarded	8,675	8,525	8,588	8,516	8,694	7,738	7,675	7,796	7,445	7,167
UF Gold	122	168	193	194	170	132	131	131	135	135

\*Beginning 05-06 students receiving graduate fellowships and assistants were given Florida residency classification for tuition purposes.

# Summary of Student Aid Awards, Academic Year 2005-06 through Academic Year 2014-15 (continued)

	2014-15	2013-14	2012-13	2011-12	2010-11	2009-10	2008-09	2007-08	2006-07	2005-06
<b>Scholarships (continued)</b>										
UF Merit	51	0	0	0	0	0	0	0	0	0
UF Platinum	102	128	128	103	65	31	35	33	37	38
University Academic	10	1	14	0	9	16	41	57	67	65
US National Service	37	0	0	0	0	0	0	0	0	0
<b>Total Scholarships</b>	<b>45,609</b>	<b>46,463</b>	<b>47,035</b>	<b>47,981</b>	<b>49,351</b>	<b>49,527</b>	<b>50,186</b>	<b>48,547</b>	<b>47,068</b>	<b>44,981</b>
<b>Loans</b>										
Arthur L. Wallace Loan	22	19	10	6	0	2	3	16	11	13
Dentistry	44	42	17	27	22	49	43	37	29	42
Grad PLUS	3,344	3,454	3,381	3,262	2,582	1,958	1,754	0	0	0
Medical	13	20	20	20	2	11	13	7	10	3
Occ Phy Therapy	0	0	0	0	0	0	0	0	0	0
Perkins/NDL	1,803	1,580	1,135	1,328	1,606	1,695	1,122	2,617	2,694	2,385
PLUS	1,507	1,238	1,134	979	862	880	771	1,761	798	754
Private Loans	718	726	688	567	420	393	578	793	987	834
Short-Term Loan	382	482	459	632	682	678	691	640	537	759
Student Aid for Education	37	92	92	82	51	73	103	295	362	111
Subsidized Stafford/GSL	10,051	9,985	11,256	18,309	16,943	16,253	15,852	14,837	14,377	15,678
UF College-Awarded	152	190	188	217	167	225	183	129	262	236
UF Long-Term	5	3	1	0	0	1	0	9	7	15
Unsubsidized Stafford	17,775	17,413	18,605	17,300	16,257	16,589	16,697	14,273	14,512	14,819
Veterinary Medicine	11	22	9	10	11	5	6	9	22	29
<b>Total Loans</b>	<b>35,864</b>	<b>35,266</b>	<b>36,995</b>	<b>42,739</b>	<b>39,605</b>	<b>38,812</b>	<b>37,816</b>	<b>35,423</b>	<b>34,608</b>	<b>35,678</b>
<b>Total Awards</b>	<b>125,109</b>	<b>122,564</b>	<b>127,675</b>	<b>134,011</b>	<b>132,315</b>	<b>131,820</b>	<b>125,303</b>	<b>121,046</b>	<b>116,910</b>	<b>112,624</b>
<b>Total Unduplicated Recipients</b>	<b>46,491</b>	<b>46,193</b>	<b>45,995</b>	<b>47,400</b>	<b>47,441</b>	<b>47,807</b>	<b>46,325</b>	<b>43,570</b>	<b>42,929</b>	<b>43,700</b>
<b>Other Programs</b>										
Florida Prepaid	12,843	12,367	11,665	11,356	10,801	11,131	11,844	11,613	10,695	10,695

# Summary of Student Aid Disbursed, Academic Year 2005-06 through Academic Year 2014-15

	2014-15	2013-14	2012-13	2011-12	2010-11	2009-10	2008-09	2007-08	2006-07	2005-06
<b>Private Donor Awards</b>	<b>\$22,559,699</b>	<b>\$21,437,962</b>	<b>\$20,038,266</b>	<b>\$20,375,234</b>	<b>\$19,075,045</b>	<b>\$18,445,013</b>	<b>\$20,604,051</b>	<b>\$17,769,008</b>	<b>\$15,803,291</b>	<b>\$13,665,977</b>
<b>Employment</b>										
Federal Work Study Program	1,826,760	1,500,326	2,033,669	1,838,024	1,997,113	2,890,446	1,772,948	1,660,296	1,925,484	2,244,310
Other Personnel Services	18,960,113	18,369,607	18,244,141	16,602,514	15,125,504	13,449,842	12,060,085	10,542,697	9,777,787	9,167,194
FWEP	90,431	76,538	85,027	96,302	0	0	0	0	0	0
<b>Total Employment</b>	<b>\$20,877,304</b>	<b>\$19,946,471</b>	<b>\$20,362,837</b>	<b>\$18,536,840</b>	<b>\$17,122,617</b>	<b>\$16,340,288</b>	<b>\$13,833,033</b>	<b>\$12,202,993</b>	<b>\$11,703,271</b>	<b>\$11,411,504</b>
<b>Grants</b>										
Academic Competitiveness	0	0	0	0	2,127,779	2,138,512	1,828,875	1,640,474	1,394,310	0
Athletic	9,625,361	9,285,528	9,000,411	8,627,019	8,337,186	7,537,728	6,667,469	5,647,579	4,928,225	4,824,115
Federal Pell	47,317,954	46,552,588	45,739,492	45,813,968	49,908,204	46,112,705	26,598,608	23,096,648	19,664,232	20,082,730
Federal Supplemental	2,860,244	2,786,401	2,810,691	2,821,125	2,847,992	2,981,453	2,088,294	2,819,251	2,820,763	2,190,741
Florida Student Assistant	6,555,371	6,061,458	6,309,937	6,426,514	6,604,506	6,509,580	6,693,521	6,920,607	6,802,364	5,854,775
Graduate	4,494,065	4,325,444	4,714,113	2,947,520	3,186,815	4,645,212	2,929,364	2,316,126	2,036,251	2,772,654
I. Douglas Turner	15,385,441	15,305,996	15,226,065	8,869,446	14,063,841	12,849,589	8,175,513	11,069,750	9,818,046	10,073,443
Metta Heathcote	90,260	105,430	98,601	93,757	87,459	86,180	136,073	106,011	103,743	97,485
Miscellaneous	709,038	631,925	787,215	575,427	400,984	601,687	760,622	716,461	822,791	684,581
SMART	0	0	0	0	6,089,562	5,611,683	2,094,208	2,510,835	1,914,656	0
TEACH	21,627	34,931	32,820	39,500	54,000	53,500	28,000	0	0	0
<b>Total Grants</b>	<b>\$87,059,361</b>	<b>\$85,089,701</b>	<b>\$84,719,345</b>	<b>\$76,214,276</b>	<b>\$93,708,328</b>	<b>\$89,127,829</b>	<b>\$58,000,547</b>	<b>\$56,843,742</b>	<b>\$50,305,381</b>	<b>\$46,580,524</b>
<b>Scholarships</b>										
Alliance Partner	237,499	276,562	282,811	322,811	359,538	402,179	408,810	431,184	404,056	329,555
Brecht	138,000	115,500	102,000	101,500	112,500	113,500	113,500	143,000	75,500	104,000
Dental / Disadvantaged	645,000	585,000	645,000	124,503	114,696	77,931	106,166	92,811	174,292	0
Florida Academic	39,919,758	41,407,737	39,602,269	40,371,014	50,916,216	51,300,661	55,888,487	51,823,064	48,548,381	44,389,508
Florida Incentive Scholarship	1,319,533	0	0	0	0	0	0	0	0	0
Florida Medallion	16,985,350	18,245,275	18,148,273	19,155,424	24,246,921	25,950,020	27,276,925	26,103,235	25,603,658	24,820,487
Florida Top Scholar	138,908	154,572	160,046	155,058	213,533	206,442	202,311	207,560	197,060	184,684
Florida Vocational Gold Seal	32,340	70,994	94,875	100,776	90,334	71,535	31,244	50,290	37,647	128,648
General & Special	834,231	1,007,272	980,693	1,015,747	1,075,184	1,016,514	918,367	696,264	643,384	869,221
Honorably Discharged Graduate Assist	51,900	0	0	0	0	0	0	0	0	0
I / S Matriculation Waivers	44,884,427	44,332,223	46,448,814	45,761,674	42,277,051	39,113,555	33,910,029	30,324,784	25,722,469	23,030,517
Lombardi	174,463	193,529	182,951	209,000	196,178	81,777	192,425	197,400	216,000	213,000
Machen Florida Opportunity Scholars	10,982,732	10,214,296	12,136,788	11,629,377	7,548,792	7,272,896	5,538,247	3,641,025	2,133,026	-
Medical / Disadvantaged	0	0	0	60,522	93,083	139,624	162,655	0	0	0
Miscellaneous	13,000	16,000	19,000	22,000	19,000	22,000	17,000	18,000	17,000	17,000
Miscellaneous Other State	268,085	237,309	227,432	231,924	866,952	883,229	1,156,951	965,892	909,951	770,820
National Merit	246,978	372,000	526,847	567,055	575,250	1,811,646	3,010,675	4,554,778	5,904,410	6,049,913
National Merit-Stipend	323,850	362,100	434,650	479,980	498,900	639,510	728,357	830,125	922,000	879,675
O / S Matriculation Waivers*	14,111,908	13,951,177	16,668,895	17,663,171	15,392,784	13,919,104	11,811,031	10,098,629	9,697,005	9,078,902
Presidential Academic	969,877	982,127	1,011,681	1,345,375	1,041,625	1,019,125	1,104,290	1,546,750	1,670,875	1,756,875
President Achievement	0	36,000	87,000	111,000	166,000	201,000	230,995	0	0	0
UF College Awarded	29,779,140	27,978,481	27,501,766	27,181,161	26,226,971	22,252,746	21,271,904	21,512,267	19,511,049	20,448,477
UF Gold	918,412	1,041,465	1,085,000	944,000	499,500	388,500	387,000	433,500	384,000	390,898

\*Beginning 05-06 students receiving graduate fellowships and assistants were given residency classification for tuition purposes.

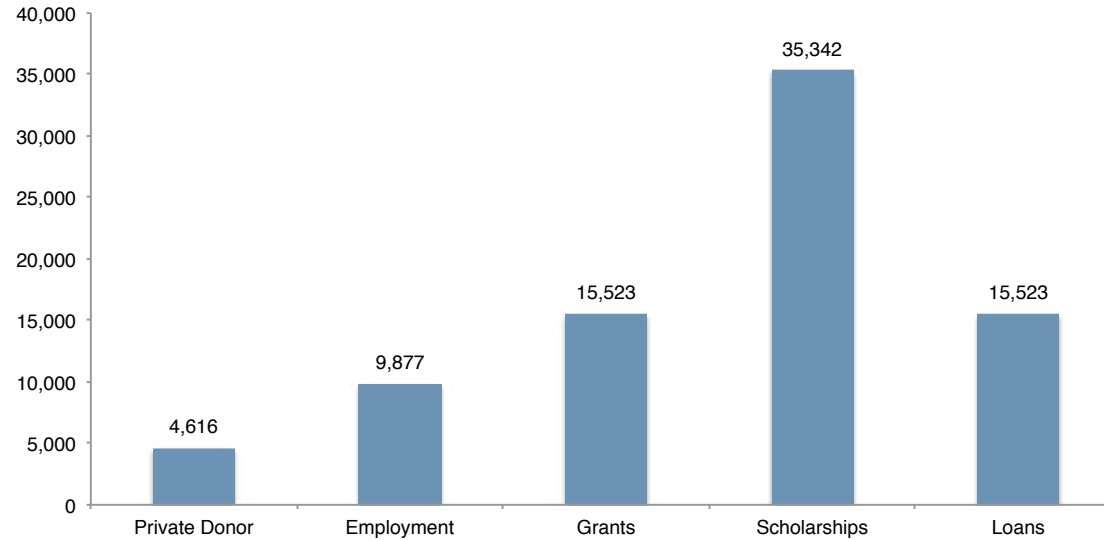
# Summary of Student Aid Disbursed, Academic Year 2005-06 through Academic Year 2014-15 (continued)

	2014-15	2013-14	2012-13	2011-12	2010-11	2009-10	2008-09	2007-08	2006-07	2005-06
<b>Scholarships (continued)</b>										
UF Merit	25,250	0	0	0	0	0	0	0	0	0
UF Platinum	985,206	1,035,000	1,024,737	764,000	258,000	124,000	140,000	166,000	129,320	140,000
University Academic	26,000	4,000	32,000	0	16,000	10,238	44,566	75,254	64,169	70,637
US National Service	119,493	0	0	0	0	0	0	0	0	0
<b>Total Scholarships</b>	<b>\$164,131,340</b>	<b>\$162,618,619</b>	<b>\$167,403,528</b>	<b>\$166,286,261</b>	<b>\$171,687,970</b>	<b>\$166,029,453</b>	<b>\$163,716,125</b>	<b>\$152,881,128</b>	<b>\$142,047,876</b>	<b>\$132,812,364</b>
<b>Loans</b>										
Arthur L. Wallace	71,345	52,598	21,168	21,000	0	2,987	7,200	35,192	45,405	34,035
Dentistry	308,000	228,000	187,804	243,741	110,500	338,800	371,400	420,000	473,998	174,004
Grad PLUS	28,954,005	33,096,922	29,749,520	27,184,305	19,420,893	11,773,285	11,391,953	7,742,031	0	0
Medical	83,400	133,022	126,065	143,000	9,000	64,500	60,404	269,248	33,567	42,511
Occ Phy Therapy	0	0	0	0	0	0	0	0	0	0
Perkins	6,419,577	4,773,863	4,043,285	3,814,365	3,349,759	3,099,130	2,992,419	6,708,735	7,389,847	8,208,404
PLUS	13,208,216	11,006,416	10,078,096	8,468,393	6,644,058	5,782,925	5,182,637	5,910,489	11,951,339	5,724,258
Private	7,596,699	7,107,091	6,783,728	5,216,272	3,856,666	3,547,074	5,362,080	6,512,614	6,709,293	8,794,272
Short-Term Loan	538,190	563,172	536,535	706,859	832,466	773,399	775,572	689,415	697,979	568,029
Student Aid for Education	88,356	210,647	216,514	188,878	113,094	159,338	233,187	433,971	628,795	746,846
Subsidized Stafford	36,188,991	35,490,513	40,443,799	91,106,912	83,419,583	77,858,898	76,207,473	72,105,710	67,823,172	66,799,868
UF College Awarded	620,570	892,441	833,291	848,154	742,659	844,257	689,396	650,353	478,437	646,611
UF Long-Term	7,500	3,012	2,500	0	0	2,500	0	13,906	16,882	14,093
Unsubsidized Stafford	172,353,384	174,017,704	176,225,566	125,632,939	120,374,841	116,452,281	112,818,577	95,757,691	84,963,233	83,504,640
Veterinary Medicine	66,848	134,730	43,000	49,000	63,000	78,000	72,000	128,000	110,000	121,000
<b>Total Loans</b>	<b>\$266,505,081</b>	<b>\$267,710,131</b>	<b>\$269,290,871</b>	<b>\$263,623,818</b>	<b>\$238,936,519</b>	<b>\$220,777,374</b>	<b>\$216,164,298</b>	<b>\$197,377,355</b>	<b>\$181,321,947</b>	<b>\$175,378,571</b>
<b>Total Aid Disbursed</b>	<b>\$561,132,785</b>	<b>\$556,802,884</b>	<b>\$561,814,847</b>	<b>\$545,036,429</b>	<b>\$540,530,479</b>	<b>\$510,719,957</b>	<b>\$472,318,054</b>	<b>\$437,074,226</b>	<b>\$401,181,766</b>	<b>\$379,848,940</b>

	2014-15	2013-14	2012-13	2011-12	2010-11	2009-10	2008-09	2007-08	2006-07	2005-06
<b>Other Programs</b>										
Florida Prepaid	\$41,425,220	\$39,578,666	\$36,181,369	\$32,292,722	\$29,117,433	\$28,900,122	\$28,469,947	\$30,520,565	\$25,979,477	\$23,190,751

## Financial Aid By Type: Awards and Recipients

2014-15 Recipients by Aid Type

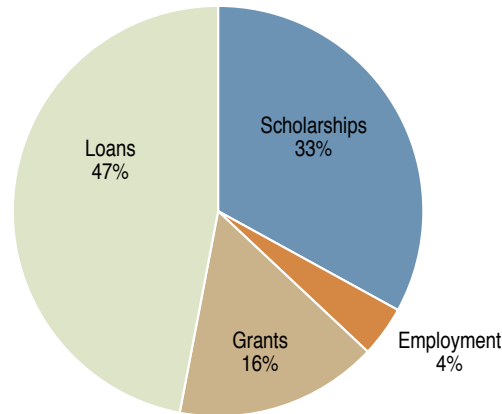


Year	Private Donor		Employment		Grants		Scholarships		Loans		Total	
	Awards	Recipients	Awards	Recipients	Awards	Recipients	Awards	Recipients	Awards	Recipients	Awards	Recipients
2014-15	5,976	4,616	10,455	9,877	27,205	15,523	45,609	35,342	35,864	18,132	125,109	46,491
2013-14	5,872	4,650	9,687	9,380	25,276	15,254	46,721	36,097	35,266	18,123	122,822	46,193
2012-13	5,673	4,456	9,876	9,561	28,096	16,045	47,320	36,113	36,995	19,170	127,960	45,995
2011-12	6,045	4,695	7,596	7,146	29,650	15,172	48,285	36,675	42,739	19,307	134,045	47,400
2010-11	6,053	4,758	7,165	6,778	30,141	14,385	49,647	36,909	39,605	18,046	132,611	47,441
2009-10	6,184	4,746	7,433	6,753	29,864	14,388	49,803	37,670	38,812	17,822	132,096	47,807
2008-09	7,297	5,458	6,712	6,239	23,292	11,551	50,454	37,799	37,816	17,577	125,571	46,325
2007-08	6,826	5,217	6,682	6,234	23,954	11,450	49,726	37,013	36,334	17,469	123,522	44,379
2006-07	6,485	5,086	6,540	6,277	24,051	11,008	48,818	35,992	35,423	17,175	121,317	43,570
2005-06	6,246	4,976	6,674	6,339	22,314	11,187	47,318	35,093	34,608	17,520	117,160	42,929

Source: Summary of Student Aid; Financial Aid Database

## Financial Aid By Type: Dollars

2014-15

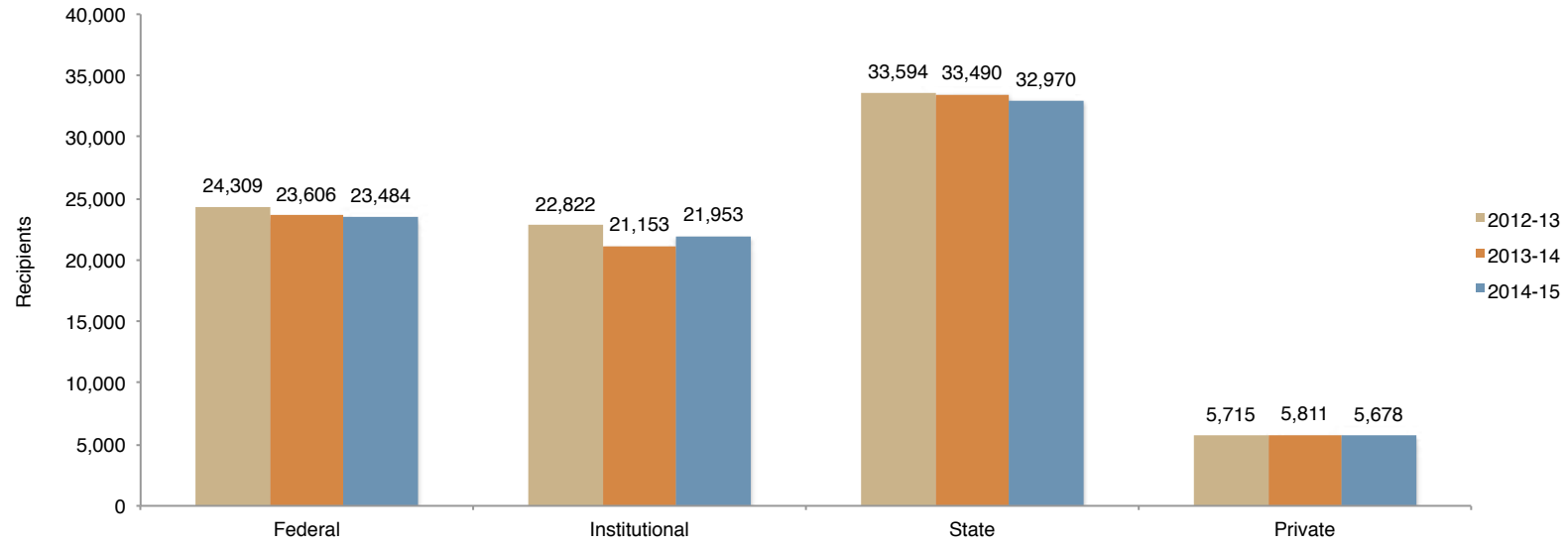


Year	Employment		Grants		Scholarships		Loans		Total	
	Amount	%	Amount	%	Amount	%	Amount	%	Amount	%
2014-15	\$20,877,304	4%	\$87,059,361	16%	\$186,691,039	33%	\$266,505,081	47%	\$561,132,785	100%
2013-14	\$19,946,471	4%	\$85,089,701	15%	\$184,056,581	33%	\$267,710,131	48%	\$556,802,884	100%
2012-13	\$20,362,837	4%	\$84,719,345	15%	\$187,441,794	33%	\$269,290,871	48%	\$561,814,847	100%
2011-12	\$18,536,840	3%	\$76,214,276	14%	\$188,692,306	35%	\$263,623,818	48%	\$547,067,240	100%
2010-11	\$17,122,617	3%	\$93,708,328	17%	\$191,880,053	36%	\$238,936,519	44%	\$541,647,517	100%
2009-10	\$16,340,288	3%	\$89,127,829	17%	\$185,389,145	36%	\$220,777,374	44%	\$511,634,636	100%
2008-09	\$13,833,033	3%	\$58,000,547	12%	\$185,255,986	39%	\$216,164,298	46%	\$473,253,864	100%
2007-08	\$12,202,993	3%	\$56,843,742	13%	\$171,680,820	39%	\$197,377,355	45%	\$438,104,910	100%
2006-07	\$11,703,271	3%	\$50,305,381	13%	\$158,768,543	39%	\$181,321,947	45%	\$402,099,142	100%
2005-06	\$11,411,504	3%	\$46,580,524	12%	\$147,338,794	39%	\$175,378,571	46%	\$380,709,393	100%

Source: Summary of Student Aid



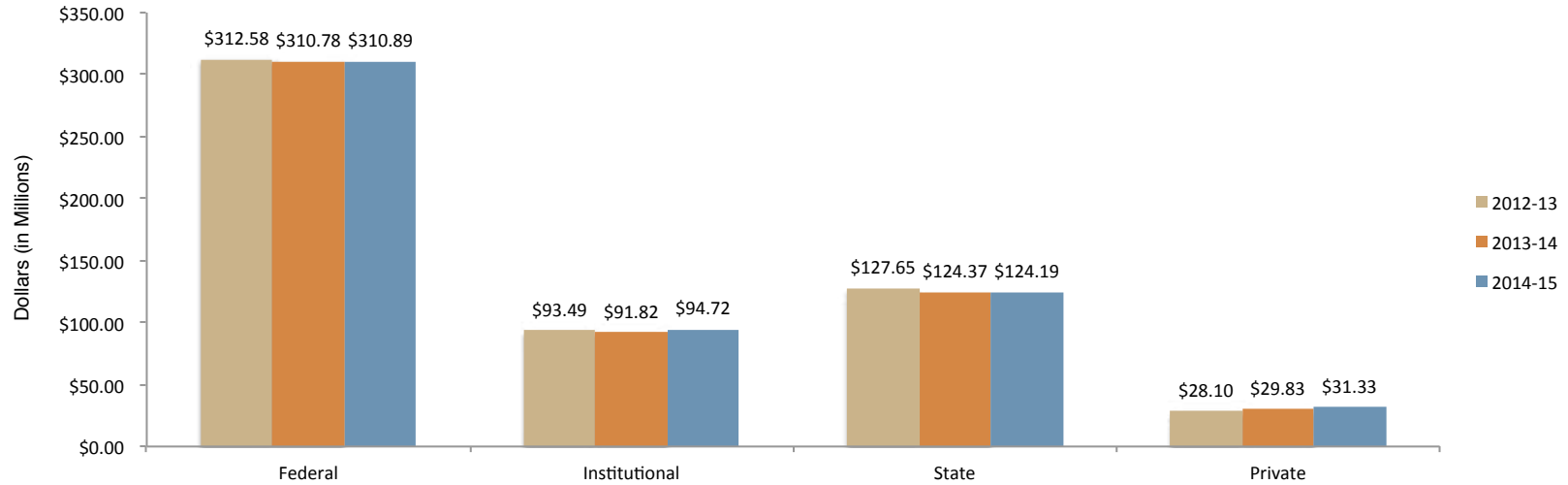
## Financial Aid by Source: Awards and Recipients



Year	Federal		Institutional		State		Private		Total	
	Awards	Recipients	Awards	Recipients	Awards	Recipients	Awards	Recipients	Awards	Recipients
2014-15	49,603	23,484	30,306	21,953	37,641	32,970	7,559	5,678	125,109	46,491
2013-14	48,392	23,606	29,292	21,153	37,550	33,490	7,588	5,811	122,822	46,193
2012-13	51,051	24,309	30,985	22,882	38,406	33,594	7,518	5,715	127,960	45,995
2011-12	57,296	24,798	28,759	19,921	40,200	34,199	7,790	5,865	134,045	47,400
2010-11	57,932	23,845	27,043	19,643	40,142	34,539	7,494	5,667	143,412	47,441
2009-10	56,035	22,804	28,049	23,823	40,242	35,041	7,770	6,248	132,096	47,807
2008-09	50,390	21,409	24,634	17,831	41,296	35,593	9,251	7,826	125,571	46,325
2007-08	48,525	21,269	25,363	18,233	40,924	35,239	8,710	8,685	123,522	44,379
2006-07	46,675	20,648	25,356	17,828	40,880	35,119	8,406	6,782	121,317	43,570
2005-06	43,875	20,770	25,174	18,008	39,589	34,118	9,421	7,766	118,059	42,929

Source: Financial Aid Database

## Financial Aid by Source: Dollars

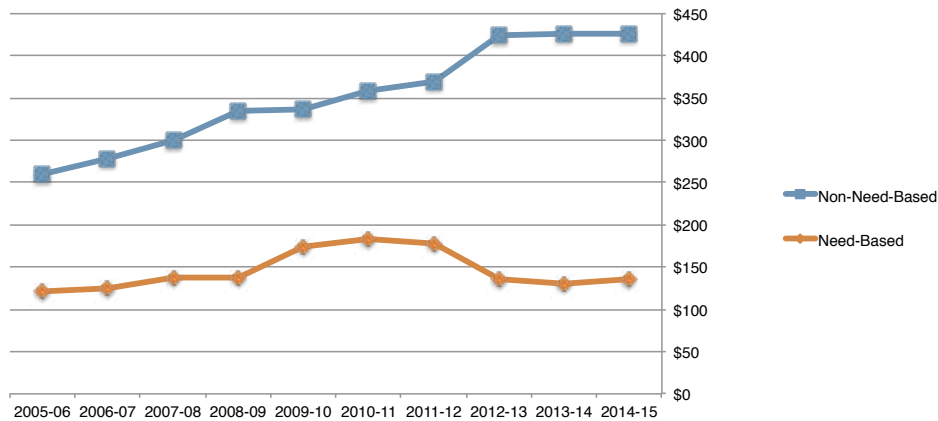


Year	Federal		Institutional		State		Private		Total	
	Amount	%	Amount	%	Amount	%	Amount	%	Amount	%
2014-15	\$310,894,749	55%	\$94,715,522	17%	\$124,191,298	22%	\$31,331,216	6%	\$561,132,785	100%
2013-14	\$310,778,446	56%	\$91,820,958	17%	\$124,371,269	22%	\$29,832,211	5%	\$556,802,884	100%
2012-13	\$312,575,961	56%	\$93,488,705	16%	\$127,650,698	23%	\$28,099,483	5%	\$561,814,847	100%
2011-12	\$307,787,681	56%	\$82,384,670	15%	\$129,896,731	24%	\$26,998,158	5%	\$547,067,240	100%
2010-11	\$297,073,340	54%	\$79,707,011	15%	\$140,635,931	26%	\$24,231,235	5%	\$541,647,517	100%
2009-10	\$275,952,893	54%	\$77,211,493	15%	\$135,233,048	26%	\$23,237,202	5%	\$511,634,636	100%
2008-09	\$244,252,149	52%	\$67,554,341	14%	\$134,277,673	28%	\$27,169,702	6%	\$473,253,864	100%
2007-08	\$221,278,572	51%	\$67,015,068	15%	\$124,290,846	28%	\$25,520,424	6%	\$438,104,910	100%
2006-07	\$201,118,403	50%	\$59,142,016	15%	\$118,045,175	29%	\$23,793,548	6%	\$402,099,142	100%
2005-06	\$189,772,688	50%	\$58,243,069	15%	\$108,911,346	29%	\$23,782,290	6%	\$380,709,393	100%

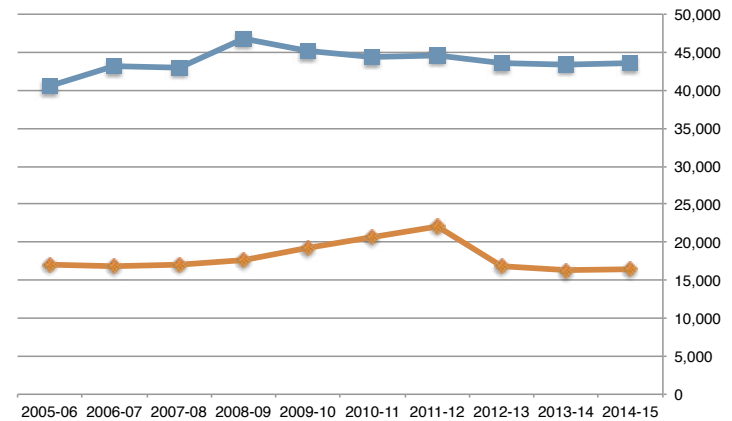
Source: Financial Aid Database

## Total Need and Non-Need Based Aid

Dollars in Millions



Number of Recipients



Year	Need-Based			Non-Need-Based			Totals		
	Awards	Recipients	Dollars	Awards	Recipients	Dollars	Awards	Recipients	Dollars
2014-15	41,510	16,379	\$135,177,195	83,599	43,471	\$425,955,591	125,109	46,491	\$561,132,785
2013-14	38,909	16,338	\$130,217,596	83,913	43,373	\$426,585,288	122,822	46,193	\$566,802,884
2012-13	42,713	16,930	\$136,696,461	85,247	43,595	\$425,118,386	127,960	45,995	\$561,814,847
2011-12	51,461	22,015	\$177,861,139	82,584	44,532	\$369,206,101	134,045	47,400	\$547,067,240
2010-11	51,306	20,569	\$183,290,088	81,305	44,336	\$358,357,430	132,611	47,441	\$541,647,517
2009-10	50,915	19,305	\$174,759,483	81,181	45,167	\$336,875,153	132,096	47,807	\$511,634,636
2008-09	42,959	17,714	\$137,616,028	82,612	46,866	\$335,637,836	125,571	46,325	\$473,253,864
2007-08	44,127	16,991	\$138,005,724	79,395	42,998	\$300,099,186	123,522	44,379	\$438,104,911
2006-07	42,820	16,858	\$124,650,735	78,497	43,168	\$277,448,407	121,317	43,570	\$402,099,142
2005-06	39,333	17,142	\$121,287,469	76,674	40,510	\$259,421,924	117,160	42,929	\$380,709,393

Source: Summary of Student Aid; Financial Aid Database

The change in amounts from 11-12 to 12-13 can be attributed to the elimination of the Federal Direct Subsidized loan to graduate/professional students.



Student Financial Affairs

2014-15

# FACT BOOK

## demographics

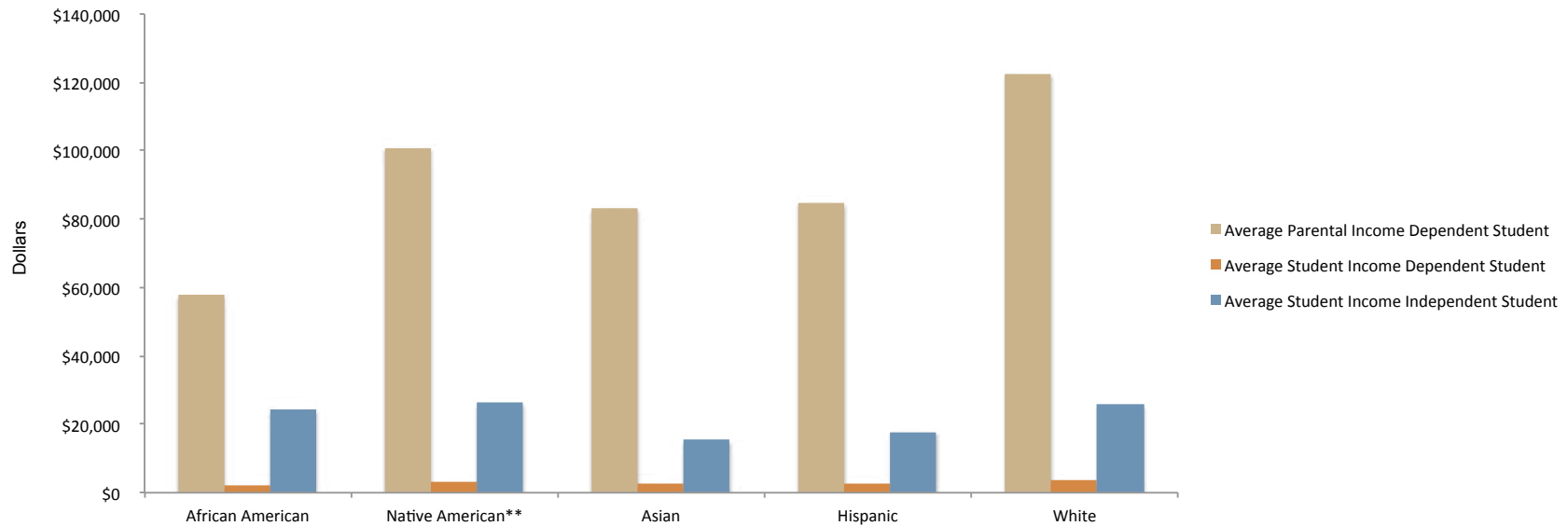
## Parental Median Income of Students

Year	Median Income	%<\$20,000	%>30,000	%>\$50,000	%>\$100,000
Fall 2014	\$100,000-104,999	9.51	81.56	71.15	49.56
Fall 2012	\$100,000-104,999	8.43	85.51	74.23	50.70
Fall 2010	\$95,000-99,999	7.39	86.96	74.33	48.54
Fall 2008	\$100,000-104,999	5.63	89.79	78.31	50.73
Fall 2006	\$100,000-104,999	3.97	90.56	79.62	51.93
Fall 2004	\$95,000-99,999	4.26	91.05	78.82	47.03
Fall 2002	\$85,000-89,999	6.37	86.55	73.36	40.22
Fall 2000	\$85,000-89,999	5.91	88.34	75.21	43.24
Fall 1998	\$81,000 & above	5.94	88.79	75.38	n/a
Fall 1996	\$71,000-72,999	7.25	83.13	69.42	n/a
Fall 1994	\$63,000-64,999	8.04	80.88	63.68	n/a
Fall 1992	\$62,000-63,999	9.42	81.69	62.95	n/a
Fall 1990	\$60,000-61,999	n/a	80.69	n/a	n/a
Fall 1989	\$54,000-55,999	n/a	79.52	n/a	n/a
Fall 1988	\$54,000-55,999	n/a	80.66	n/a	n/a

Source: Survey of new freshman parents completed in the fall by the Accounting Section of Student Financial Affairs. Survey not completed every year.

Note: Income figures are regardless of student's aid status.

## 2014-15 Average Income of Financial Aid Applicants by Race\*



	Average Parental Income Dependent Student	Average Student Income Dependent Student	Average Student Income Independent Student
African American	\$57,927	\$2,337	\$24,281
Native American**	\$100,918	\$3,341	\$26,287
Asian	\$83,309	\$2,891	\$15,376
Hispanic	\$84,666	\$2,784	\$17,875
White	\$122,449	\$3,669	\$25,712
Total Average Income	\$102,404	\$3,261	\$23,414

\* Only students who reported their race and provided income information are included.

\*\* Population of students in this category is less than 250; therefore, results may not be statistically significant.

Source: Financial Aid Database



## 2014-15 Financial Aid by Race\*

	Undergraduate		Graduate/Professional		Total	
	Recipients	Avg. Award	Recipients	Avg. Award	Recipients	Avg. Award
<b>Grants</b>						
Black	2,010	\$6,234	228	\$2,222	2,238	\$5,826
Native American	102	\$5,278	9	\$2,189	111	\$5,027
Asian	1,491	\$5,999	268	\$1,793	1,759	\$5,358
Hispanic	3,639	\$5,820	391	\$2,245	4,030	\$5,473
White	5,415	\$5,060	1,486	\$2,068	6,901	\$4,416
<b>Loans</b>						
Black	1,452	\$7,675	664	\$26,582	2,116	\$13,608
Native American	97	\$7,869	39	\$21,600	136	\$11,806
Asian	787	\$6,828	531	\$31,254	1,318	\$16,669
Hispanic	2,865	\$7,425	1,002	\$29,482	3,867	\$13,140
White	5,887	\$8,376	4,046	\$26,272	9,933	\$15,666
<b>Scholarships</b>						
Black	1,943	\$6,980	527	\$13,623	2,470	\$8,398
Native American	164	\$3,493	44	\$11,147	208	\$5,112
Asian	2,748	\$3,588	475	\$7,476	6,336	\$2,117
Hispanic	5,450	\$3,588	816	\$8,915	9,038	\$2,969
White	15,718	\$3,549	4,294	\$8,198	19,267	\$4,722
<b>Student Employment</b>						
Black	749	\$2,521	282	\$1,638	1,031	\$2,280
Native American	36	\$2,712	21	\$785	57	\$2,002
Asian	546	\$2,166	274	\$1,259	820	\$1,863
Hispanic	1,190	\$2,467	426	\$1,479	1,616	\$2,206
White	2,870	\$2,243	2,513	\$1,417	5,383	\$1,857
<b>All Aid**</b>						
(unduplicated totals)						
Black	2,807	\$13,939	892	\$28,922	3,699	\$17,552
Native American	224	\$8,804	65	\$21,062	289	\$11,100
Asian	3,228	\$7,856	863	\$24,302	4,091	\$11,457
Hispanic	6,875	\$9,446	1,440	\$26,613	8,315	\$13,143
White	18,336	\$7,577	6,892	\$21,494	25,228	\$11,268

\* Only students who reported their race are included.

\*\* All Aid category represents the average of total awards to financial aid recipients by race.

## Financial Aid Recipients by Race\*, Fiscal Year 2005-06 through Fiscal Year 2014-15

	2014-15	2013-14	2012-13	2011-12	2010-11	2009-10	2008-09	2007-08	2006-07	2005-06
<b>Grants</b>										
Black	2,238	2,339	2,458	2,510	2,648	2,799	2,632	2,457	2,317	2,221
Native American	111	112	95	110	83	89	60	42	36	34
Asian	1,759	1,739	1,892	1,672	1,596	1,574	1,275	1,085	975	999
Hispanic	4,030	3,695	3,662	3,441	3,127	3,045	2,476	2,138	2,030	1,954
White	6,901	6,893	7,361	6,846	6,242	6,965	5,680	5,086	5,011	5,510
<b>Loans</b>										
Black	2,116	2,196	2,294	2,360	2,331	2,428	2,486	2,445	2,268	2,142
Native American	136	137	154	159	138	126	91	81	68	68
Asian	1,318	1,295	1,454	1,185	1,307	1,212	1,161	1,095	1,020	1,015
Hispanic	3,867	3,627	3,663	3,476	3,028	2,869	2,610	2,548	2,461	2,450
White	9,933	10,075	10,772	10,958	10,453	10,471	10,555	10,678	10,771	11,494
<b>Scholarships</b>										
Black	2,470	2,652	2,764	2,963	3,055	3,183	3,123	3,141	3,005	2,684
Native American	208	217	227	233	221	216	179	141	117	127
Asian	6,336	3,278	3,311	3,281	3,297	3,106	2,978	2,781	2,597	2,508
Hispanic	9,038	6,065	5,787	5,612	5,510	5,305	4,927	4,512	4,221	4,004
White	19,267	20,472	20,394	20,949	21,419	22,156	23,247	23,621	23,656	23,999
<b>Student Employment</b>										
Black	1,031	983	1,057	983	963	1,048	1,051	1,085	1,122	1,067
Native American	57	50	48	38	25	26	22	14	20	17
Asian	820	727	726	552	503	465	434	425	441	444
Hispanic	1,616	1,465	1,386	1,122	1,086	1,023	936	936	974	1,001
White	5,383	5,201	5,164	3,659	3,547	3,364	2,969	3,179	3,259	3,444
<b>All Aid</b>										
(unduplicated totals)										
Black	3,699	3,785	3,902	4,089	4,324	4,501	4,501	4,479	4,321	4,062
Native American	289	301	300	308	282	265	222	180	145	156
Asian	4,091	4,044	4,071	4,015	4,007	3,830	3,617	3,385	3,120	3,067
Hispanic	8,315	7,857	7,388	7,138	6,971	6,683	6,244	5,824	5,823	5,255
White	25,228	25,475	25,392	25,945	26,540	27,427	28,340	28,824	29,132	29,708

\*Only students who reported their race are listed.

Source: Financial Aid Database

## Average Financial Aid Award by Race\*, Fiscal Year 2005-06 through 2014-15

	2014-15	2013-14	2012-13	2011-12	2010-11	2009-10	2008-09	2007-08	2006-07	2005-06
<b>Grants</b>										
Black	\$5,826	\$5,984	\$5,675	\$5,571	\$7,034	\$6,444	\$5,713	\$5,213	\$4,811	\$4,534
Native American	\$5,027	\$4,608	\$4,710	\$4,546	\$5,904	\$5,312	\$4,523	\$3,877	\$4,439	\$4,134
Asian	\$5,358	\$5,442	\$4,783	\$4,858	\$6,353	\$5,758	\$4,997	\$4,849	\$4,629	\$4,108
Hispanic	\$5,473	\$5,478	\$5,355	\$4,902	\$6,475	\$5,994	\$5,209	\$5,028	\$4,774	\$4,405
White	\$4,416	\$4,455	\$4,290	\$3,964	\$5,231	\$4,538	\$3,819	\$4,050	\$3,757	\$3,375
<b>Loans</b>										
Black	\$13,608	\$12,712	\$11,619	\$11,064	\$10,376	\$9,813	\$9,287	\$8,464	\$7,717	\$7,510
Native American	\$11,806	\$13,482	\$12,865	\$13,174	\$13,402	\$12,518	\$12,147	\$11,583	\$11,250	\$9,694
Asian	\$16,669	\$16,340	\$15,763	\$18,731	\$15,312	\$14,223	\$13,324	\$12,353	\$11,490	\$10,832
Hispanic	\$13,140	\$12,840	\$12,286	\$11,727	\$11,125	\$10,476	\$10,688	\$10,062	\$9,065	\$8,610
White	\$15,666	\$15,646	\$14,834	\$14,553	\$14,224	\$13,266	\$13,295	\$12,120	\$11,385	\$10,595
<b>Scholarships</b>										
Black	\$8,398	\$8,008	\$8,041	\$7,548	\$6,922	\$6,609	\$6,520	\$6,135	\$5,722	\$5,755
Native American	\$5,112	\$5,074	\$4,750	\$4,599	\$4,146	\$4,066	\$4,046	\$4,110	\$3,866	\$3,972
Asian	\$2,117	\$4,004	\$4,094	\$4,100	\$4,396	\$4,262	\$4,442	\$4,170	\$3,939	\$3,666
Hispanic	\$2,969	\$4,093	\$4,176	\$4,180	\$4,277	\$4,202	\$4,225	\$3,846	\$3,648	\$3,470
White	\$4,722	\$4,381	\$4,387	\$4,345	\$4,461	\$4,347	\$4,386	\$5,181	\$4,069	\$3,869
<b>Student Employment</b>										
Black	\$2,280	\$2,407	\$2,447	\$2,517	\$2,344	\$2,481	\$2,237	\$1,995	\$1,835	\$1,819
Native American	\$2,002	\$1,987	\$2,302	\$1,878	\$2,573	\$2,569	\$1,885	\$2,216	\$1,943	\$2,829
Asian	\$1,863	\$1,836	\$1,943	\$2,129	\$1,990	\$2,021	\$1,960	\$1,714	\$1,484	\$1,573
Hispanic	\$2,206	\$1,947	\$1,918	\$2,282	\$2,140	\$2,262	\$2,029	\$2,010	\$1,848	\$1,824
White	\$1,857	\$1,884	\$1,966	\$2,508	\$2,305	\$2,277	\$2,168	\$1,910	\$1,880	\$1,749
<b>All Aid**</b>										
(unduplicated totals)										
Black	\$17,552	\$17,310	\$16,764	\$16,037	\$15,313	\$14,552	\$13,516	\$12,265	\$11,086	\$10,720
Native American	\$11,561	\$11,839	\$12,058	\$12,420	\$11,774	\$11,302	\$9,651	\$9,509	\$9,765	\$8,668
Asian	\$11,325	\$11,148	\$11,529	\$11,195	\$11,392	\$10,569	\$9,931	\$9,191	\$8,555	\$8,149
Hispanic	\$12,419	\$12,026	\$12,376	\$11,719	\$11,452	\$10,910	\$10,170	\$9,551	\$8,822	\$7,217
White	\$11,379	\$11,299	\$11,460	\$11,042	\$10,741	\$10,008	\$9,542	\$8,842	\$8,370	\$8,053

\*Only students who reported their race are included.

Source: Financial Aid Database

## 2014-15 Financial Aid By Gender\*

	Undergraduate		Graduate/Professional		Total	
	Recipients	Average Award	Recipients	Average Award	Recipients	Average Award
<b>Grants</b>						
Male	5,602	\$6,144	957	\$2,261	6,543	\$5,596
Female	7,527	\$6,178	1,519	\$2,238	9,021	\$5,538
<b>Loans</b>						
Male	4,940	\$8,136	2,723	\$27,929	7,643	\$15,020
Female	6,506	\$8,288	3,828	\$26,423	10,377	\$14,814
<b>Scholarships</b>						
Male	11,748	\$3,784	4,948	\$17,284	16,703	\$7,781
Female	15,214	\$3,898	4,673	\$15,559	19,952	\$6,622
<b>Student Employment</b>						
Male	2,265	\$2,484	2,334	\$1,737	4,605	\$2,104
Female	3,067	\$2,394	2,190	\$1,729	5,270	\$2,116
<b>All Aid</b>						
Male	14,531	\$8,581	6,672	\$25,149	21,197	\$13,731
Female	18,279	\$9,140	7,074	\$25,592	25,439	\$13,639

\* Only students who report their gender are included.

Source: Financial Aid Database

## Financial Aid Recipients by Gender\*, Fiscal Year 2005-06 through 2014-15

	2014-15	2013-14	2012-13	2011-12	2010-11	2009-10	2008-09	2007-08	2006-07	2005-06
<b>Grants</b>										
Male	6,543	6,495	6,807	6,352	5,914	6,230	4,851	4,826	4,581	4,762
Female	9,021	8,769	9,253	8,833	8,463	8,811	6,717	6,591	6,401	6,432
<b>Loans</b>										
Male	7,643	7,714	8,229	8,302	7,858	7,774	7,758	7,743	7,609	7,822
Female	10,377	10,288	10,882	10,869	10,082	9,948	9,745	9,644	9,476	9,602
<b>Scholarships</b>										
Male	16,703	16,804	16,754	17,081	17,457	17,505	17,656	17,589	17,067	16,507
Female	19,952	20,256	20,206	20,848	21,007	21,097	21,009	20,517	20,085	19,593
<b>Student Employment</b>										
Male	4,605	4,352	4,562	3,244	3,097	3,000	2,800	2,783	2,778	2,778
Female	5,270	5,017	4,983	3,887	3,665	3,731	3,435	3,445	3,491	3,556
<b>All Aid</b>										
Male	21,197	21,134	21,086	21,399	21,820	21,842	21,774	21,836	21,466	21,019
Female	25,439	25,201	25,058	25,635	25,846	26,113	25,753	25,393	24,960	24,478

\* Only students who report their gender are included.

Source: Financial Aid Database

## Average Financial Aid Awards by Gender\*, Fiscal Year 2005-06 through Fiscal Year 2014-15

	2014-15	2013-14	2012-13	2011-12	2010-11	2009-10	2008-09	2007-08	2006-07	2005-06
<b>Grants</b>										
Male	\$5,596	\$5,608	\$5,382	\$5,146	\$6,618	\$5,988	\$5,147	\$5,088	\$4,816	\$4,354
Female	\$5,538	\$5,608	\$5,254	\$4,991	\$6,323	\$5,597	\$4,996	\$4,844	\$4,429	\$4,082
<b>Loans</b>										
Male	\$15,020	\$14,193	\$14,092	\$13,687	\$13,198	\$12,398	\$12,248	\$11,177	\$10,645	\$10,028
Female	\$14,814	\$14,608	\$13,969	\$13,642	\$13,255	\$12,371	\$12,314	\$11,371	\$10,494	\$10,021
<b>Scholarships</b>										
Male	\$7,781	\$7,586	\$7,744	\$7,811	\$7,815	\$7,436	\$6,676	\$6,359	\$6,309	\$5,730
Female	\$6,622	\$6,352	\$6,423	\$6,370	\$6,330	\$6,080	\$5,473	\$5,126	\$5,027	\$4,760
<b>Student Employment</b>										
Male	\$2,104	\$2,086	\$2,074	\$2,686	\$2,621	\$2,520	\$2,244	\$1,975	\$1,911	\$1,792
Female	\$2,116	\$2,141	\$2,154	\$2,520	\$2,394	\$2,343	\$2,202	\$1,945	\$1,861	\$1,808
<b>All Aid</b>										
Male	\$13,731	\$13,628	\$13,839	\$13,480	\$13,171	\$12,426	\$11,212	\$10,462	\$10,065	\$9,455
Female	\$13,639	\$13,446	\$13,581	\$13,066	\$12,726	\$11,848	\$10,722	\$9,981	\$9,426	\$9,076

\* Only students who report their gender are included.

Source: Financial Aid Database



## Aid by Classification

	2014-15		2013-14		2012-13	
	Recipients*	Dollars	Recipients*	Dollars	Recipients*	Dollars
<b>Freshman</b>						
Total	5,421	\$45,951,622	5,466	\$44,105,465	5,314	\$43,888,526
Scholarships	4,176	\$19,629,229	4,572	\$17,919,940	4,382	\$17,444,178
Grants	2,373	\$13,645,957	2,380	\$13,820,851	2,416	\$13,684,409
Loans	1,552	\$11,896,424	1,660	\$11,765,847	1,726	\$12,194,845
Work	539	\$780,012	419	\$598,826	400	\$565,094
<b>Sophomore</b>						
Total	1,982	\$18,941,035	2,025	\$18,336,790	2,226	\$21,316,123
Scholarships	1,707	\$6,350,130	1,831	\$5,977,019	2,078	\$7,383,548
Grants	797	\$6,813,418	862	\$7,108,083	991	\$7,742,106
Loans	680	\$5,295,668	683	\$4,866,968	837	\$5,743,431
Work	253	\$481,799	204	\$384,720	222	\$447,038
<b>Junior</b>						
Total	6,438	\$57,559,380	6,440	\$57,218,247	6,731	\$41,005,263
Scholarships	4,922	\$17,393,638	5,129	\$17,351,623	5,504	\$20,705,183
Grants	2,830	\$17,452,163	2,896	\$17,404,640	2,983	\$17,467,842
Loans	2,570	\$20,734,374	2,654	\$20,603,212	2,928	\$21,460,410
Work	877	\$1,979,205	840	\$1,858,773	923	\$2,077,011
<b>Senior</b>						
Total	15,401	\$142,192,612	15,385	\$138,578,904	14,724	\$134,618,303
Scholarships	13,117	\$48,939,660	13,290	\$49,200,629	12,662	\$45,482,832
Grants	6,251	\$38,236,255	6,218	\$37,755,910	6,117	\$37,148,464
Loans	5,815	\$46,628,065	5,669	\$43,660,446	6,004	\$44,379,125
Work	3,074	\$8,388,632	2,932	\$7,961,919	2,764	\$7,607,882
<b>Senior (fifth year)</b>						
Total	2,196	\$17,741,028	2,051	\$16,730,126	1,832	\$15,741,648
Scholarships	1,930	\$6,947,278	1,777	\$6,330,035	1,570	\$5,389,359
Grants	762	\$4,290,689	771	\$4,222,389	705	\$4,038,696
Loans	719	\$5,124,008	691	\$4,987,353	703	\$5,053,971
Work	551	\$1,379,053	472	\$1,190,350	465	\$1,259,622
<b>Post baccalaureate</b>						
Total	206	\$2,217,303	204	\$2,212,950	202	\$1,923,356
Scholarships	86	\$291,354	99	\$347,030	111	\$369,584
Grants	15	\$141,906	17	\$231,212	10	\$57,421
Loans	162	\$1,751,254	149	\$1,561,246	142	\$1,462,262
Work	23	\$32,788	23	\$73,462	16	\$34,089

\*Total "Recipients" is an unduplicated count.

Source: Financial Aid Database

## Aid by Classification (continued)

	2014-15		2013-14		2012-13	
	Recipients*	Dollars	Recipients*	Dollars	Recipients*	Dollars
<b>Master's Candidate</b>						
Total	4,242	\$51,724,964	4,316	\$53,765,685	4,604	\$59,203,000
Scholarships	2,731	\$17,829,475	2,810	\$19,281,695	3,092	\$23,503,197
Grants	542	\$2,106,200	473	\$1,702,005	681	\$1,645,428
Loans	1,898	\$29,056,362	1,932	\$29,997,103	2,048	\$31,105,291
Work	1,286	\$2,732,927	1,316	\$2,784,881	,442	\$2,949,084
<b>Specialist</b>						
Total	2,987	\$47,246,536	2,954	\$45,490,128	3,178	\$49,017,056
Scholarships	2,255	\$25,966,914	2,235	\$25,527,469	2,456	\$27,245,802
Grants	347	\$921,864	282	\$767,072	392	\$925,496
Loans	1,096	\$17,968,746	1,092	\$17,022,744	1,175	\$18,149,209
Work	1,421	\$2,389,013	1,346	\$2,172,843	1,516	\$2,696,549
<b>Doctoral Candidate</b>						
Total	1,796	\$24,865,134	1,864	\$25,759,513	1,850	\$26,003,028
Scholarships	1,705	\$19,845,526	1,766	\$20,315,616	1,740	\$20,059,535
Grants	15	\$42,000	14	\$37,484	23	\$60,088
Loans	226	\$3,067,809	255	\$3,307,636	288	\$3,957,581
Work	1,229	\$1,909,799	1,275	\$2,098,776	1,242	\$1,925,824
<b>First-Year Professional**</b>						
Total	922	\$27,327,546	848	\$24,675,576	808	\$23,553,824
Scholarships	454	\$3,533,546	363	\$2,387,795	342	\$2,231,850
Grants	241	\$311,075	191	\$413,147	377	\$659,101
Loans	791	\$23,355,562	733	\$21,795,879	708	\$20,599,545
Work	58	\$127,363	47	\$78,755	28	\$63,328
<b>Second-Year Professional**</b>						
Total	1,076	\$33,472,738	1,071	\$32,751,499	1,024	\$31,636,947
Scholarship	526	\$4,100,648	526	\$4,080,312	493	\$3,350,275
Grants	435	\$706,595	313	\$809,207	568	\$1,004,306
Loans	939	\$28,536,901	923	\$27,721,192	908	\$27,190,403
Work	102	\$128,594	91	\$140,788	81	\$91,963
<b>Third-Year Professional**</b>						
Total	947	\$30,198,214	971	\$28,973,657	1,038	\$30,340,020
Scholarships	451	\$3,484,277	409	\$2,298,575	409	\$1,968,890
Grants	499	\$921,276	418	\$729,160	446	\$594,069
Loans	838	\$25,603,296	865	\$25,798,533	946	\$27,599,114
Work	129	\$189,366	104	\$147,389	124	\$177,947

\* Total "Recipients" is an unduplicated count.

\*\* Professional students include law, veterinary medicine, medical, dental, and pharmacy students.

Source: Financial Aid Database

## Aid by Classification (continued)

	2014-15		2013-14		2012-13	
	Recipients*	Dollars	Recipients*	Dollars	Recipients*	Dollars
<b>Fourth-Year Professional**</b>						
Total	529	\$19,030,446	536	\$19,281,005	508	\$17,837,062
Scholarships	225	\$1,515,331	229	\$1,274,442	202	\$877,878
Grants	371	\$457,849	387	\$490,794	310	\$251,419
Loans	482	\$17,018,544	495	\$17,477,880	471	\$16,657,798
Work	64	\$38,722	49	\$37,890	55	\$49,967
<b>Sixth-Year Professional**</b>						
Total	34	\$728,000	37	\$714,525	39	\$697,277
Scholarships	0	0	2	\$3,150	5	\$10,527
Grants	0	0	0	0	0	0
Loans	34	\$728,000	35	\$711,375	34	\$686,750
Work	0	0	0	0	0	0
<b>Seventh-Year Professional**</b>						
Total	207	\$3,426,651	174	\$3,051,946	192	\$3,283,474
Scholarships	124	\$1,247,723	96	\$922,778	108	\$1,029,160
Grants	13	\$43,430	10	\$35,594	4	\$13,000
Loans	108	\$1,972,903	107	\$1,976,695	112	\$2,135,861
Work	89	\$162,595	61	\$116,879	80	\$105,453
<b>Eighth-Year Professional**</b>						
Total	123	\$2,169,620	131	\$1,909,206	99	\$1,645,895
Scholarships	87	\$1,171,557	98	\$1,026,299	72	\$1,042,142
Grants	6	\$30,500	8	\$29,451	2	\$4,500
Loans	50	\$908,053	49	\$778,231	33	\$552,263
Work	43	\$59,510	57	\$75,225	48	\$46,790
<b>Ninth-Year Professional**</b>						
Total	137	\$2,551,785	160	\$2,786,549	173	\$3,104,396
Scholarships	136	\$2,315,146	159	\$2,492,834	173	\$2,815,923
Grants	0	0	0	0	0	0
Loans	12	\$144,607	11	\$185,703	12	\$172,577
Work	101	\$92,032	118	\$108,012	119	\$115,896

\* Total "Recipients" is an unduplicated count.

\*\* Professional students include law, veterinary medicine, medical, dental, and pharmacy students.

Source: Financial Aid Database

## Aid by University of Florida College

College/School	Freshman		Sophomore		Junior		Senior	
	Recipients	Amount	Recipients	Amount	Recipients	Amount	Recipients	Amount
Accounting	22	\$118,067	84	\$493,795	132	\$807,696	327	\$2,244,411
Agriculture	85	\$600,824	295	\$2,528,841	964	\$8,741,895	2,104	\$20,081,239
Architecture	16	\$99,874	46	\$388,443	130	\$1,180,248	312	\$3,617,804
Business Administration	157	\$1,084,990	635	\$4,734,018	906	\$6,744,142	1,963	\$15,252,228
Building Construction	7	\$62,997	23	\$157,385	62	\$454,373	135	\$1,032,134
Dentistry	-	-	-	-	-	-	-	-
Education	11	\$99,661	50	\$492,789	114	\$1,084,386	134	\$1,164,207
Engineering	242	\$1,663,376	888	\$7,080,517	1,262	\$10,511,862	1,434	\$12,646,253
Fine Arts	31	\$267,008	114	\$1,122,524	229	\$2,186,131	502	\$4,846,533
Health & Human Performance	67	\$438,645	183	\$1,907,445	459	\$4,491,742	1,128	\$10,978,680
Health Related Professions	68	\$419,889	227	\$1,764,113	277	\$2,107,768	537	\$4,546,010
Journalism & Communications	62	\$456,202	303	\$2,717,121	595	\$5,509,517	1,318	\$12,896,001
Law	-	-	-	-	-	-	-	-
Liberal Arts & Sciences	765	\$6,263,960	1,493	\$15,203,257	2,498	\$23,534,165	5,444	\$51,250,568
Natural Resources & Envir.	8	\$19,022	6	\$54,729	25	\$200,533	60	\$515,913
Medicine	-	-	-	-	-	-	-	-
Medicine-Physician Assist.	-	-	-	-	-	-	-	-
Nursing	41	\$339,912	140	\$1,037,088	173	\$1,449,222	242	\$1,995,675
Pharmacy	11	\$50,849	28	\$266,396	24	\$260,218	7	\$26,120
Pharmacy - PD	-	-	-	-	-	-	-	-
Physical Therapy	-	-	-	-	-	-	-	-
Veterinary Medicine	-	-	-	-	-	-	-	-

## Aid by University of Florida College (continued)

College/School	Senior (5th Year)		Post-Baccalaureate		Master's Candidate		Specialist	
	Recipients	Amount	Recipients	Amount	Recipients	Amount	Recipients	Amount
Accounting	-	-	-	-	113	\$971,597	58	\$380,583
Agriculture	-	-	9	\$82,539	350	\$6,471,683	448	\$11,542,394
Architecture	-	-	-	-	75	\$1,454,105	177	\$4,032,978
Business Administration	-	-	-	-	809	\$14,041,894	287	\$6,588,684
Building Construction	-	-	-	-	27	\$330,256	18	\$361,256
Dentistry	-	-	-	-	-	-	-	-
Education	-	-	22	\$13,032	458	\$7,643,060	379	\$8,318,992
Engineering	2,209	\$17,704,874	7	\$51,894	1,122	\$11,304,460	461	\$12,924,846
Fine Arts	-	-	1	\$2,750	243	\$5,273,673	101	\$2,727,732
Health & Human Performance	-	-	2	\$14,100	144	\$2,907,355	53	\$1,678,913
Health Related Professions	-	-	44	\$354,750	165	\$4,015,005	314	\$7,580,707
Journalism & Communications	-	-	-	-	154	\$2,503,746	68	\$1,836,618
Law	-	-	-	-	88	\$2,549,639	7	\$104,014
Liberal Arts & Sciences	-	-	26	\$251,903	514	\$9,131,623	601	\$18,815,176
Natural Resources & Envir.	-	-	-	-	-	-	-	-
Medicine	-	-	-	-	-	-	-	-
Medicine-Physician Assist.	-	-	-	-	-	-	-	-
Nursing	-	-	118	\$1,446,335	20	\$329,710	48	\$860,476
Pharmacy	-	-	-	-	211	\$2,948,215	88	\$2,051,379
Pharmacy - PD	-	-	-	-	-	-	-	-
Physical Therapy	-	-	-	-	-	-	-	-
Veterinary Medicine	-	-	-	-	-	-	-	-

## Aid by University of Florida College (continued)

College/School	Doctoral Candidate		First Year Professional		Second Year Professional		Third Year Professional	
	Recipients	Amount	Recipients	Amount	Recipients	Amount	Recipients	Amount
Accounting	-	-	-	-	-	-	-	-
Agriculture	294	\$7,034,248	-	-	-	-	-	-
Architecture	30	\$560,305	-	-	-	-	-	-
Business Administration	40	\$1,137,996	-	-	-	-	-	-
Building Construction	-	-	-	-	-	-	-	-
Dentistry	-	-	84	\$5,353,196	82	\$5,478,671	72	\$4,509,371
Education	174	\$3,673,362	-	-	-	-	-	-
Engineering	502	\$13,078,758	-	-	-	-	-	-
Fine Arts	30	\$753,285	-	-	-	-	-	-
Health & Human Performance	43	\$1,002,240	-	-	-	-	-	-
Health Related Professions	106	\$3,056,980	-	-	-	-	-	-
Journalism & Communications	20	\$443,902	-	-	-	-	-	-
Law	-	-	109	\$3,545,199	318	\$10,232,666	372	\$11,651,068
Liberal Arts & Sciences	698	\$19,337,632	-	-	-	-	-	-
Natural Resources & Envir.	-	-	-	-	-	-	-	-
Medicine	-	-	136	\$5,722,285	117	\$5,427,928	111	\$5,524,989
Medicine-Physician Assist.	-	-	46	\$435,369	102	\$4,417,892	-	-
Nursing	13	\$155,751	-	-	-	-	-	-
Pharmacy	35	\$946,533	-	-	-	-	-	-
Pharmacy - PD	-	-	310	\$9,438,692	282	\$9,408,343	245	\$8,584,950
Physical Therapy	-	-	66	\$1,756,222	53	\$1,459,596	42	\$1,302,597
Veterinary Medicine	-	-	88	\$2,958,841	84	\$3,499,709	94	\$3,977,900

## Aid by University of Florida College (continued)

College/School	Fourth Year Professional		Fifth Year Professional		Sixth Year Professional		Seventh Year Professional	
	Recipients	Amount	Recipients	Amount	Recipients	Amount	Recipients	Amount
Accounting	-	-	-	-	-	-	-	-
Agriculture	-	-	-	-	-	-	-	-
Architecture	-	-	-	-	-	-	-	-
Business Administration	-	-	-	-	-	-	-	-
Building Construction	-	-	-	-	-	-	-	-
Dentistry	68	3,674,584	-	-	35	\$2,255,624	17	\$660,354
Education	-	-	-	-	-	-	-	-
Engineering	-	-	-	-	-	-	-	-
Fine Arts	-	-	-	-	-	-	-	-
Health & Human Performance	-	-	-	-	-	-	-	-
Health Related Professions	-	-	-	-	-	-	-	-
Journalism & Communications	-	-	-	-	-	-	-	-
Law	-	-	-	-	-	-	-	-
Liberal Arts & Sciences	-	-	-	-	-	-	-	-
Natural Resources & Envir.	-	-	-	-	-	-	-	-
Medicine	114	5,288,735	-	-	-	-	62	\$1,919,138
Medicine-Physician Assist.	-	-	-	-	-	-	-	-
Nursing	-	-	-	-	-	-	-	-
Pharmacy	-	-	-	-	-	-	-	-
Pharmacy - PD	261	8,168,304	-	-	-	-	-	-
Physical Therapy	1	215	-	-	-	-	-	-
Veterinary Medicine	90	3,535,177	-	-	-	-	54	\$952,817

## Aid by University of Florida College (continued)

College/School	Eighth-Year Professional		Ninth-Year Professional		Total*	
	Recipients	Amount	Recipients	Amount	Recipients	Amount
Accounting	-	-	-	-	736	\$5,016,150
Agriculture	-	-	-	-	4,549	\$57,083,663
Architecture	-	-	-	-	786	\$11,333,758
Business Administration	-	-	-	-	4,797	\$49,583,953
Building Construction	-	-	-	-	272	\$2,398,400
Dentistry	21	\$731,947	-	-	379	\$22,663,747
Education	-	-	-	-	1,342	\$22,489,489
Engineering	-	-	-	-	8,127	\$86,966,840
Fine Arts	-	-	-	-	1,251	\$17,179,636
Health & Human Performance	-	-	-	-	2,079	\$23,419,119
Health Related Professions	-	-	-	-	1,738	\$23,845,222
Journalism & Communications	-	-	-	-	2,520	\$26,363,108
Law	-	-	-	-	894	\$28,082,587
Liberal Arts & Sciences	-	-	-	-	12,039	\$143,788,284
Natural Resources & Envir.	-	-	-	-	99	\$790,196
Medicine	45	\$1,589,007	133	\$4,545,449	718	\$30,017,531
Medicine-Physician Assist.	-	-	-	-	148	\$4,853,261
Nursing	-	-	-	-	795	\$7,614,167
Pharmacy	-	-	-	-	404	\$6,549,712
Pharmacy - PD	-	-	-	-	1,098	\$35,600,289
Physical Therapy	-	-	-	-	162	\$4,518,631
Veterinary Medicine	31	\$720,243	18	\$460,181	459	\$16,104,867

\* Total "Recipients" is an unduplicated count.

\*\* Professional students include law, veterinary medicine, medical, dental, and pharmacy students.

Source: Financial Aid Database



## Financial Aid by Florida County

County	2014-15		2013-14		2012-13		2011-12	
	Recipients	Amount	Recipients	Amount	Recipients	Amount	Recipients	Amount
Alachua	2,999	\$36,669,281	3,053	\$36,969,998	3,152	\$39,321,315	3,416	\$40,956,211
Baker	40	\$320,398	29	\$237,686	21	\$237,102	25	\$222,473
Bay	259	\$2,875,782	253	\$3,128,136	258	\$2,950,403	276	\$2,929,568
Bradford	43	\$458,515	37	\$324,292	39	\$388,896	29	\$361,231
Brevard	1,267	\$14,159,992	1,262	\$13,820,336	1,262	\$13,985,121	1,315	\$14,034,859
Broward	4,591	\$50,831,980	4,660	\$50,610,456	4,614	\$51,528,555	4,707	\$51,065,471
Calhoun	9	\$119,762	13	\$155,790	10	\$137,034	10	\$127,464
Charlotte	139	\$1,599,409	147	\$1,855,662	145	\$1,990,237	171	\$2,192,093
Citrus	189	\$2,112,862	199	\$2,469,364	201	\$2,749,809	211	\$2,584,424
Clay	601	\$6,415,258	590	\$6,228,178	582	\$6,618,021	532	\$5,692,041
Collier	533	\$6,181,628	550	\$5,856,268	540	\$6,116,200	558	\$6,069,550
Columbia	132	\$1,442,236	137	\$1,482,564	153	\$1,781,668	163	\$1,804,375
Desoto	25	\$297,912	25	\$264,558	22	\$176,188	29	\$247,852
Dixie	12	\$153,874	13	\$148,727	12	\$134,354	15	\$167,844
Duval	1,825	\$23,978,807	1,853	\$23,837,034	1,815	\$23,659,892	1,892	\$23,472,692
Escambia	383	\$4,349,151	386	\$4,510,590	388	\$4,658,020	425	\$4,701,975
Flagler	148	\$2,239,266	158	\$2,216,519	168	\$2,328,007	175	\$2,199,351
Franklin	4	\$52,761	3	\$27,116	1	\$15,150	1	\$1,429
Gadsden	19	\$162,852	24	\$253,652	28	\$366,119	34	\$454,105
Gilchrist	67	\$863,691	74	\$803,743	74	\$839,509	81	\$854,444
Glades	9	\$108,475	8	\$50,699	4	\$31,166	3	\$49,681
Gulf	13	\$206,520	15	\$200,991	17	\$215,176	14	\$153,351
Hamilton	16	\$145,782	14	\$104,257	6	\$74,453	6	\$80,278
Hardee	7	\$127,204	8	\$146,620	11	\$127,247	11	\$123,188
Hendry	38	\$488,336	39	\$381,822	33	\$342,173	40	\$357,938
Hernando	208	\$2,886,698	204	\$2,874,908	192	\$2,766,448	184	\$2,370,812

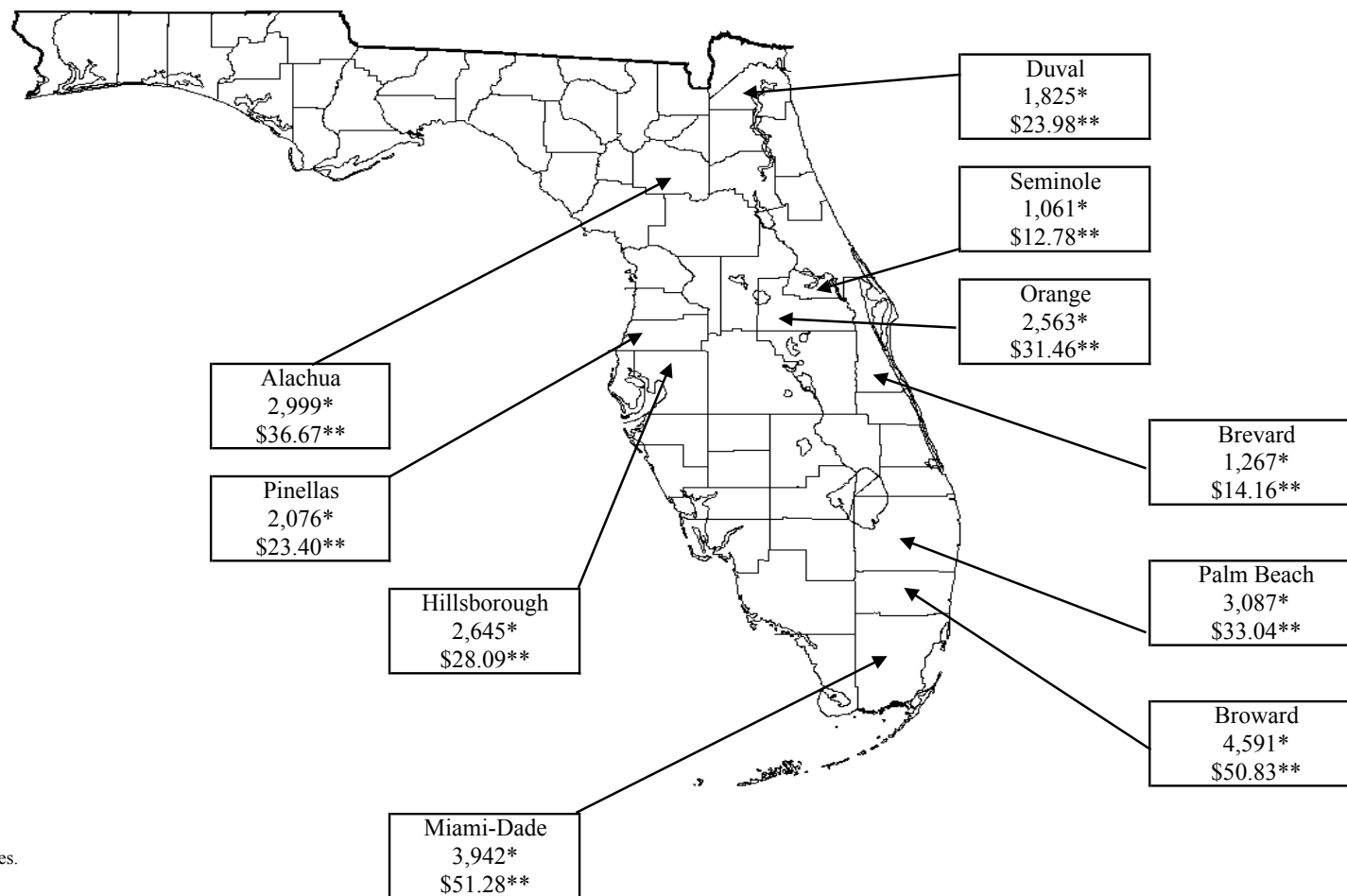
## Financial Aid by Florida County (continued)

County	2014-15		2013-14		2012-13		2011-12	
	Recipients	Amount	Recipients	Amount	Recipients	Amount	Recipients	Amount
Highlands	114	\$1,530,248	107	\$1,361,165	95	\$1,199,853	98	\$1,114,809
Hillsborough	2,645	\$28,093,059	2,572	\$27,615,151	2,488	\$28,416,379	2,511	\$28,147,499
Holmes	9	\$72,518	9	\$63,388	13	\$155,126	12	\$136,085
Indian River	258	\$2,817,204	254	\$2,479,297	245	\$2,574,520	257	\$2,865,914
Jackson	35	\$500,668	33	\$391,207	39	\$398,038	40	\$391,990
Jefferson	8	\$41,350	10	\$66,976	9	\$67,402	11	\$87,367
Lafayette	9	\$87,683	8	\$61,640	7	\$89,209	6	\$67,583
Lake	411	\$5,165,869	413	\$4,732,804	426	\$5,160,606	426	\$5,030,510
Lee	844	\$10,124,892	842	\$10,234,332	828	\$9,929,566	837	\$9,952,601
Leon	518	\$6,435,194	525	\$7,149,584	542	\$7,259,839	582	\$7,386,006
Levy	63	\$715,750	63	\$744,043	59	\$717,449	64	\$767,305
Liberty	0	\$0	1	\$11,751	1	\$17,578	2	\$4,219
Madison	16	\$167,169	16	\$182,575	21	\$274,673	23	\$244,875
Manatee	416	\$4,789,187	417	\$5,039,099	406	\$4,702,386	413	\$4,809,572
Marion	780	\$9,902,501	778	\$10,322,663	780	\$10,405,678	812	\$9,700,276
Martin	467	\$4,849,013	464	\$4,539,236	458	\$4,702,176	453	\$4,446,711
Miami-Dade	3,942	\$51,275,767	3,770	\$48,642,586	3,762	\$49,133,304	3,813	\$47,583,720
Monroe	140	\$1,566,019	152	\$1,621,364	149	\$1,718,327	144	\$1,441,982
Nassau	144	\$1,661,417	140	\$1,676,650	138	\$1,835,049	149	\$1,786,719
Okaloosa	330	\$3,320,431	371	\$3,519,597	397	\$3,813,853	440	\$3,951,671
Okeechobee	43	\$475,915	51	\$538,591	52	\$529,743	46	\$454,805
Orange	2,563	\$31,456,973	2,476	\$30,445,386	2,355	\$30,060,954	2,440	\$29,662,935
Osceola	417	\$6,343,537	400	\$5,253,087	390	\$4,857,401	362	\$4,203,079
Palm Beach	3,087	\$33,041,404	3,177	\$33,387,191	3,153	\$33,890,384	3,208	\$33,400,165
Pasco	675	\$8,806,208	683	\$8,958,839	656	\$8,256,436	633	\$7,380,508
Pinellas	2,076	\$23,460,993	2,141	\$24,601,473	2,206	\$25,282,366	2,255	\$25,310,323

## Financial Aid by Florida County (continued)

County	2014-15		2013-14		2012-13		2011-12	
	Recipients	Amount	Recipients	Amount	Recipients	Amount	Recipients	Amount
Polk	682	\$8,807,404	692	\$8,529,895	677	\$8,120,477	710	\$7,689,888
Putnam	64	\$1,010,637	74	\$991,618	84	\$1,077,421	101	\$1,174,976
Santa Rosa	167	\$1,750,079	171	\$1,906,749	169	\$1,760,801	162	\$1,575,786
Sarasota	681	\$8,077,402	694	\$8,655,842	641	\$8,006,381	658	\$7,716,879
Seminole	1,061	\$12,781,702	1,046	\$11,756,247	1,071	\$12,745,405	1,174	\$12,913,412
St. Johns	665	\$6,684,754	605	\$5,741,056	557	\$5,568,077	519	\$5,184,538
St. Lucie	382	\$5,249,015	365	\$4,964,513	367	\$4,936,630	364	\$4,537,990
Sumter	62	\$853,009	62	\$881,417	55	\$828,223	47	\$647,363
Suwannee	72	\$918,714	67	\$708,797	67	\$761,169	62	\$704,591
Taylor	26	\$419,888	24	\$275,076	28	\$147,185	22	\$151,790
Union	27	\$403,582	21	\$276,555	22	\$306,081	29	\$386,295
Volusia	715	\$9,184,061	757	\$10,147,726	792	\$10,429,278	813	\$10,137,291
Wakulla	21	\$245,263	15	\$231,339	12	\$126,708	12	\$101,575
Walton	42	\$386,694	32	\$299,557	33	\$271,920	28	\$293,629
Washington	22	\$374,087	19	\$344,567	14	\$255,139	19	\$130,332
Unknown Code	0	0	0	0	3	\$29,951	3	\$51,512
Non-Florida	4,870	\$124,111,371	4,582	\$118,115,358	4,517	\$114,178,026	4,323	\$110,877,992
Non-USA	3,515	\$63,837,982	3,508	\$63,574,448	3,635	\$66,045,334	3,660	\$67,178,856

## Financial Aid by Florida County (continued)



\*Number of recipients

\*\*Dollars (in millions)

Represented are the top ten counties.





Student Financial Affairs

2014-15

# FACT BOOK

## attendance costs

## Matriculation and Tuition Fees Per Credit Hour

Academic Year	Undergraduate	Graduate	Law
<b>2014-15</b>			
In-State	\$210.43	\$528.41	\$741.03
Out-of-State*	\$953.00	\$1,253.13	\$1,294.52
<b>2013-14</b>			
In-State	\$208.77	\$526.75	\$739.37
Out-of-State*	\$951.34	\$1,251.47	\$1,384.86
<b>2012-13</b>			
In-State	\$204.76	\$524.56	\$714.04
Out-of-State*	\$947.33	\$1,249.28	\$1,359.53
<b>2011-12</b>			
In-State	\$188.55	\$498.09	\$623.66
Out-of-State*	\$931.12	\$1,222.81	\$1,269.15
<b>2010-11</b>			
In-State	\$168.15	\$454.83	\$546.22
Out-of-State*	\$910.72	\$1,179.55	\$1,191.71
<b>2009-10</b>			
In-State	\$145.76	\$394.85	\$474.25
Out-of-State*	\$791.47	\$1,119.57	\$1,119.74
<b>2008-09</b>			
In-State	\$125.91	\$341.29	\$411.30
Out-of-State*	\$687.40	\$971.48	\$1,056.79
<b>2007-08</b>			
In-State	\$112.41	\$311.60	\$360.28
Out-of-State*	\$622.86	\$941.79	\$1,005.77
<b>2006-07</b>			
In-State	\$106.88	\$284.44	\$328.69
Out-of-State*	\$593.03	\$914.63	\$974.18
<b>2005-06</b>			
In-State	\$103.12	\$259.75	\$299.99
Out-of-State*	\$574.08	\$889.94	\$945.48

\* Out-of-state fee is a total of in-state fees plus an out-of-state supplement.  
Source: Office of the University Bursar



## Undergraduate Student Cost of Attendance\* Comparison

Single Undergraduate Student Costs	2014-15	2013-14	2012-13	2011-12	2010-11	2009-10	2008-09	2007-08	2006-07	2005-06
Fees	\$6,310	\$6,270	\$6,170	\$5,700	\$5,020	\$4,340	\$3,790	\$3,370	\$3,330	\$3,180
Books	\$1,290	\$1,080	\$1,080	\$1,070	\$1,000	\$990	\$960	\$940	\$920	\$930
Food	\$4,290	\$4,290	\$4,130	\$3,550	\$3,340	\$2,640	\$2,520	\$2,490	\$2,420	\$2,320
Room	\$5,340	\$5,230	\$5,240	\$5,250	\$5,300	\$4,860	\$4,630	\$4,530	\$4,170	\$3,940
Transportation	\$1,100	\$1,110	\$540	\$530	\$530	\$540	\$480	\$520	\$520	\$400
Clothing Maintenance	\$690	\$690	\$680	\$650	\$630	\$650	\$620	\$610	\$590	\$570
Personal	\$270	\$270	\$1,460	\$1,840	\$1,650	\$1,630	\$1,640	\$1,640	\$1,520	\$1,340
Computer Allowance	\$1,260	\$1,280	\$1,280	\$1,240	\$910	\$1,040	\$1,100	\$970	\$900	\$910
<b>Total</b>	<b>\$20,550</b>	<b>\$20,220</b>	<b>\$20,580</b>	<b>\$19,830</b>	<b>\$18,380</b>	<b>\$16,690</b>	<b>\$15,740</b>	<b>\$15,070</b>	<b>\$14,370</b>	<b>\$13,590</b>

\* On-campus, Florida resident, undergraduate budget is used. Costs represent two semesters at 15 credit hours/term enrollment.  
Source: Student Financial Affairs' Accounting Section

## Total Student Cost of Attendance Comparison

	2014-15	2013-14	2012-13	2011-12	2010-11	2009-10	2008-09	2007-08
<b>Undergraduate</b>								
On-Campus/FL Resident	\$20,550	\$20,220	\$20,580	\$19,830	\$18,380	\$16,690	\$15,740	\$15,070
Off-Campus/FL Resident	\$20,550	\$20,220	\$20,580	\$19,830	\$18,380	\$17,360	\$17,300	\$16,380
With Parents	\$11,930	\$11,790	\$12,270	\$12,510	\$11,470	\$10,720	\$10,120	\$9,580
On-Campus/Out-of-State	\$42,828	\$42,498	\$42,858	\$42,066	\$40,670	\$36,060	\$32,590	\$30,380
<b>Graduate</b>								
On-Campus/FL Resident	\$27,860	\$27,450	\$27,730	\$26,580	\$24,620	\$22,350	\$19,940	\$20,060
Off-Campus/FL Resident	\$28,290	\$28,050	\$27,730	\$27,620	\$25,750	\$22,490	\$20,750	\$20,480
With Parents	\$18,400	\$18,260	\$18,790	\$18,860	\$17,370	\$15,850	\$13,570	\$13,680
On-Campus/Out-of-State	\$45,254	\$44,844	\$45,124	\$43,974	\$42,190	\$39,740	\$35,060	\$35,180
<b>Professional (off-campus)</b>								
Law/FL Resident	\$38,400	\$37,640	\$37,260	\$34,400	\$31,310	\$27,330	\$24,190	\$23,940
Law/Out-of-State	\$55,000	\$57,000	\$56,620	\$53,820	\$50,530	\$46,690	\$43,550	\$43,300
Dental/FL Resident**	\$63,788	\$64,756	\$62,160	\$57,250	\$51,382	\$45,188	\$42,542	\$37,784
Dental/Out-of-State**	\$90,270	\$91,238	\$88,642	\$83,732	\$77,864	\$71,668	\$69,022	\$64,264
PA/FL Resident	\$35,920	\$37,476	\$33,893	\$31,511	\$29,070	\$24,800	\$22,510	\$22,720
PA/Out-of-State	\$60,089	\$61,645	\$58,062	\$55,680	\$53,239	\$45,817	\$40,785	\$40,990
VM/FL Resident	\$45,474	\$47,076	\$45,518	\$44,488	\$40,892	\$34,434	\$32,842	\$32,674
VM/Out-of-State	\$66,450	\$68,050	\$66,494	\$63,052	\$61,866	\$58,678	\$53,816	\$53,648
MD/FL Resident	\$55,000	\$56,656	\$53,296	\$50,952	\$46,983	\$43,481	\$39,988	\$38,121
MD/Out-of-State	\$67,290	\$68,912	\$64,726	\$80,192	\$76,223	\$72,721	\$69,228	\$67,361



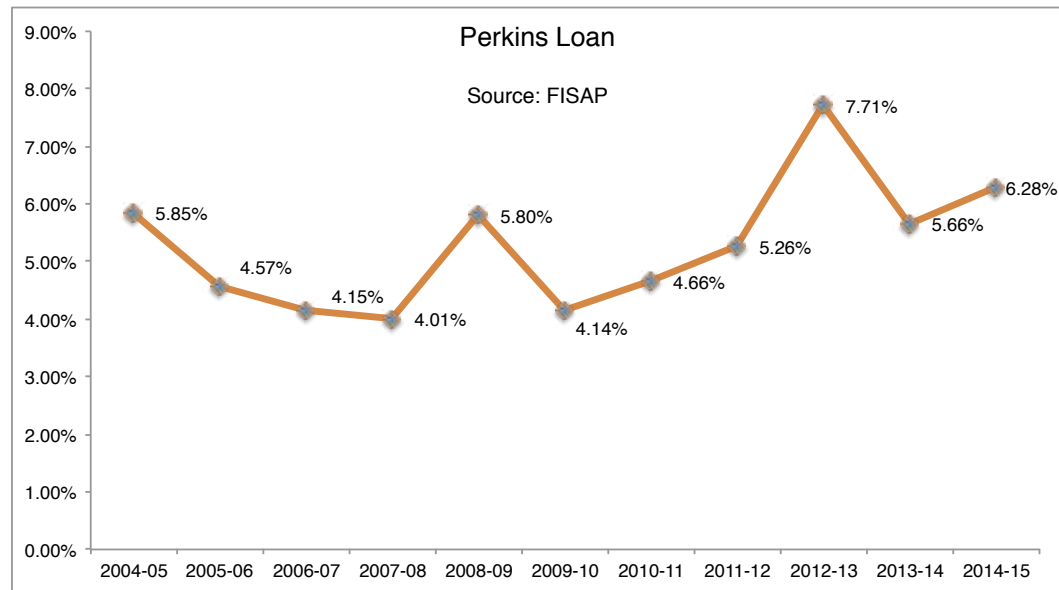
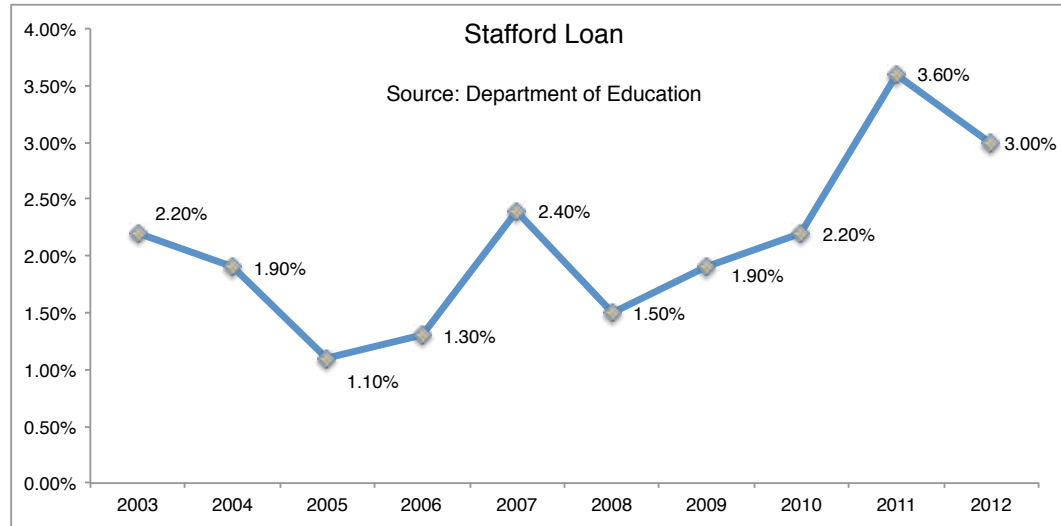
Student Financial Affairs

2014-15

# FACT BOOK

## student loans

## University of Florida Loan Cohort Default Rates



For Fiscal Year 2011, the Department of Education began using a 3-year cohort default rate.

## Average Loan Indebtedness by Loan Program

Description	Stafford	Perkins	Other Loans*	All Loans**	PLUS*	Grad PLUS
<b>Undergraduate</b>						
Students who graduated in 2014-15	\$19,346	\$4,549	\$12,945	\$21,028	\$21,478	\$14,512
<b>Graduate</b>						
Students who graduated in 2014-15	\$38,054	\$4,273	\$12,359	\$44,182	\$13,222	\$17,373
<b>Professional</b>						
Students who graduated in 2014-15	\$96,028	\$4,898	\$16,257	\$117,817	\$13,909	\$34,226

## Average Loan Indebtedness by Loan Recipients 2005-06 through 2014-15

Description	2014-15	2013-14	2012-13	2011-12	2010-11	2009-10	2008-09	2007-08	2006-07	2005-06
<b>Undergraduate</b>										
Students who attended and graduated	\$21,028	\$20,642	\$20,708	\$19,636	\$17,504	\$16,600	\$16,114	\$15,318	\$14,988	\$15,045
<b>Graduate</b>										
Students who attended and graduated	\$44,182	\$41,719	\$38,484	\$35,608	\$33,770	\$32,920	\$32,964	\$31,334	\$29,705	\$30,536
<b>Professional</b>										
Students who attended and graduated	\$117,817	\$115,945	\$95,475	\$96,315	\$90,062	\$83,079	\$78,590	\$75,049	\$70,293	\$67,614

\* "Other Loans" includes loans awarded by departments within the university and student loans received from private corporations.

\*\* "All Loans" does not include PLUS, which is a debt incurred by the parent during the student's undergraduate years. PLUS loans are not included in the average.

PLUS debt is incurred by the parent of the undergraduate student.

Source: Financial Aid Database

Note: Averages are based on students who attended UF during 2014-15 and who borrowed the specified loan at least once during their college career.





Student Financial Affairs

2014-15

# FACT BOOK

general



## Financial Aid Applications and Awards

Year	Total Aid Applicants	Need Analysis on file and received any type of aid	Need Analysis on file and need > 0	Need Analysis on file and need ≤ 0
2014-15	77,900	41,098	28,318	13,255
2013-14	81,932	45,050	29,654	15,799
2012-13	83,326	46,592	30,324	16,602
2011-12	74,002	45,979	32,568	13,735
2010-11	59,304	35,038	28,818	6,444
2009-10	54,152	33,402	26,667	6,894
2008-09	48,609	31,923	25,152	6,952
2007-08	44,302	30,463	24,095	6,508
2006-07	42,168	29,533	23,316	6,346
2005-06	46,267	30,601	21,770	8,961

\* The combination of these two columns does not add up to need analysis documents received. Documents that are unaccounted for are for those students who did not go far enough into the aid process to have a determination of financial need made.

Source: Financial Aid Database

## Student Walk-In Traffic, Fall

### Week Prior to Classes

Year	Day 1	Day 2	Day 3	Day 4	Day 5	Total
2014-2015	207	253	281	358	474	1573
2013-2014	127	123	152	150	226	778
2012-2013	130	81	86	142	178	617
2011-2012	87	194	183	233	337	1034
2010-2011	194	183	233	337	460	1407
2009-2010	404	349	454	553	745	2505
2008-2009	539	354	379	374	0	1646

### First Week of Classes

2014-2015	731	561	486	456	446	2,680
2013-2014	543	501	571	460	451	2,526
2012-2013	504	427	455	535	421	2,342
2011-2012	460	695	565	431	399	2,550
2010-2011	695	565	431	399	401	2,491
2009-2010	1,406	1,045	864	703	849	4,867
2008-2009	1,787	1,791	962	907	849	6,296

### Second Week of Classes

2014-2015	0	602	586	572	434	2,194
2013-2014	623	570	443	501	503	2,640
2012-2013	555	582	649	608	591	2,985
2011-2012	401	473	393	366	423	2,056
2010-2011	473	393	366	423	372	2,027
2009-2010	839	684	744	812	722	3,801
2008-2009	0	932	1,040	983	829	3,784

## Student Walk-In Traffic, Spring

### First Week of Classes

Year	Day 1	Day 2	Day 3	Day 4	Day 5	Total
2014-2015	445	549	404	321	351	2,070
2013-2014	566	391	378	285	330	1,950
2012-2013	196	584	433	380	226	1,819
2011-2012	224	516	396	316	310	1,762
2010-2011	283	440	354	321	254	1,652
2009-2010	768	767	705	581	509	3,330
2008-2009	834	1059	765	584	473	3,715

### Second Week of Classes

2014-2015	381	330	296	282	286	1,575
2013-2014	360	258	295	270	241	1,424
2012-2013	391	379	331	335	274	1,710
2011-2012	282	332	259	322	270	1,465
2010-2011	302	320	299	240	228	1,389
2009-2010	726	497	475	430	478	2,606
2008-2009	784	420	683	650	567	3,104



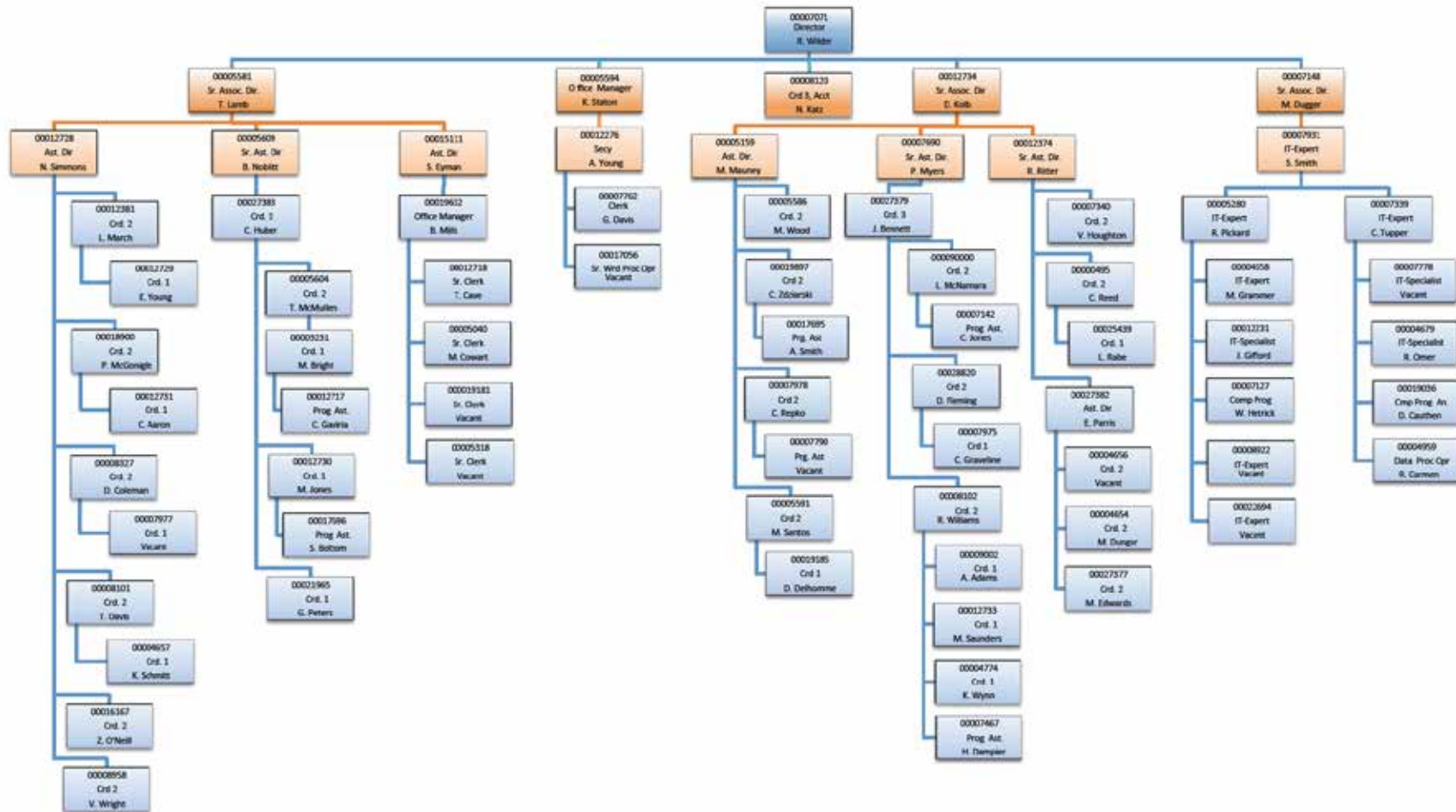
Student Financial Affairs

2014-15

# FACT BOOK

## organization

# Student Financial Affairs Organizational Chart



University of Florida  
Division of Enrollment Management  
Office for Student Financial Affairs  
May 1, 2015

## Student Financial Affairs: Staff by Classification

Year	Full-Time	OPS	FWSP
2014-15	66	1	51
2013-14	67	1	56
2012-13	65	1	53
2011-12	62	1	50
2010-11	69	1	55
2009-10	68	5	52
2008-09	66	5	53
2007-08	73	13	65
2006-07	73	37	68
2005-06	74	27	DNA

Source: Student Financial Affairs Payroll Ledgers







Student Financial Affairs

2014-15

# FACT BOOK

## appendix

## Glossary of Financial Aid Terms

- **Academic Year**—A year, that contains fall, spring, and summer terms. For example, the academic year for 2010-11 is fall 2010, spring 2011, and summer 2011.
- **Custodial Funds**—Funds awarded by private donors and University of Florida offices other than Student Financial Affairs.
- **Dependent Student**—Defined federally as a single undergraduate student without dependents who has not reached the age of 23 and who is not a veteran, orphan, or ward of the court.
- **Duplicated Count**—A student may be counted more than once in the final total, depending on the number of aid awards the student receives.
- **Grants**—Gift aid awarded to undergraduates who show financial need. These funds do not have to be repaid.
- **Independent Student**—Defined federally as a student who is a graduate student, over the age of 23, married, a veteran of the US Armed Forces, an orphan or ward of the court, or a student who has dependent children.
- **Loans**—Financial aid awarded to students that is based on financial need and requires that students repay the money.
- **N/A**—Not available.
- **Need-Based Aid**—Aid awarded that takes the student's financial situation into consideration.
- **Non-Need-Based Aid**—The student's financial need is not considered in the determination of the award.
- **Package**—A combination of aid programs used to meet the student's financial need.
- **Scholarships**—Gift aid based on academic achievement. Scholarships may or may not also be based on financial need.
- **State Programs**—Financial aid awarded by the Florida Department of Education to Florida residents. These include such programs as the Florida Student Assistance Grant, Florida Bright Futures Scholarships, Robert C. Byrd Scholarship, and Florida Teachers' Scholarship.
- **Student Employment**—A section of Student Financial Affairs which is the clearing house for part-time employment and coordinates three employment programs: the Federal Work-Study Program (FWSP), Other Personnel Services (OPS), and off-campus jobs.
- **Total Awards**—The total number of awards given to students. This is not equal to a head count of students, since a student may receive more than one award.
- **Unduplicated Count**—Each student is counted only once in the total, regardless of how many awards the student receives.



**Office for Student Financial Affairs**

S-107 Criser Hall • P. O. Box 114025 • Gainesville, FL 32611-4025

*Division of Enrollment Management*